



18 PRINCES STREET

DOUGLAS, IM1 1BD

£369,000
FREEHOLD

Beautifully presented throughout spacious town House which has been Completely refurbished & modernised to a high standard. Situated in the heart of Douglas town center ideal for walking to work. The city is the island's main hub for business, finance, legal services, shipping, transport, shopping, and entertainment.



T: 01624 820600
E: hello@plumproperties.im
W: www.plumproperties.im

- Completely Refurbished Spacious Town House
- 4 Good Size Double Bedrooms
- No Onward Chain
- 2 Modern Bathrooms
- Large Open Plan Lounge/Dining Room/Kitchen
- Utility Room, Downstairs WC
- Great Central Location For Douglas
- Gas Fired Central Heating



Overview

Nestled in the heart of Douglas on Princes Street, this property presents a unique opportunity for those seeking a prime location in the Isle of Man. While the specific type of property is not detailed, the area is known for its vibrant community and accessibility to local amenities, making it an attractive choice for both residential and commercial interests.

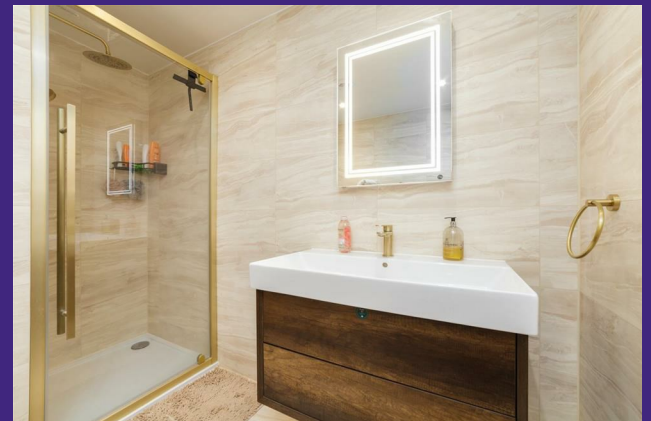
Douglas is renowned for its picturesque waterfront, offering stunning views and a lively atmosphere. Living or working in this area means you will be close to a variety of shops, restaurants, and recreational facilities, ensuring that all your needs are met within a short distance. The property's location on Princes Street places it within easy reach of public transport links, making commuting straightforward and convenient.

Additional Information

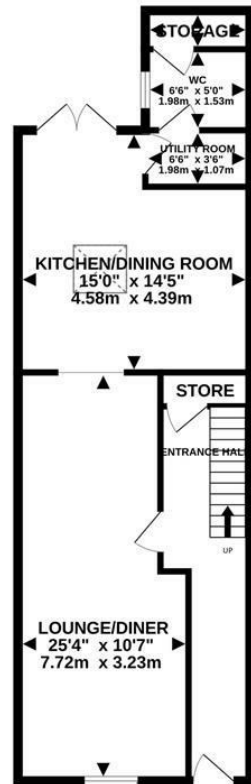
- Gas Central Heating
- No Onward Chain

Directions

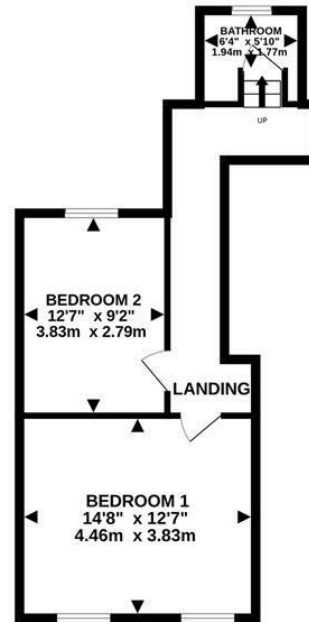
Travelling out of central Douglas up Prospect Hill travel through the traffic lights and take the first left turning onto Princes Street whereby No 18 can be found after a short distance on the right hand side.



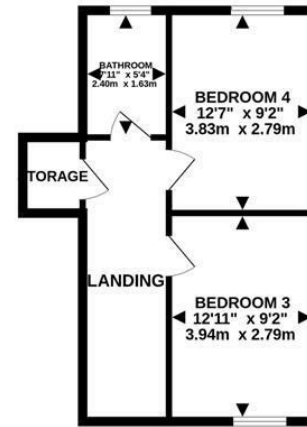
GROUND FLOOR
629 sq.ft. (58.5 sq.m.) approx.



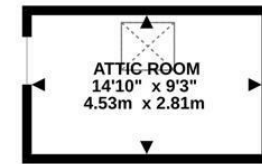
1ST FLOOR
431 sq.ft. (40.0 sq.m.) approx.



2ND FLOOR
387 sq.ft. (36.0 sq.m.) approx.



3RD FLOOR
137 sq.ft. (12.7 sq.m.) approx.



TOTAL FLOOR AREA : 1584 sq.ft. (147.2 sq.m.) approx.

Whilst every attempt has been made to ensure the accuracy of the floorplan contained here, measurements of doors, windows, rooms and any other items are approximate and no responsibility is taken for any error, omission or mis-statement. This plan is for illustrative purposes only and should be used as such by any prospective purchaser. The services, systems and appliances shown have not been tested and no guarantee as to their operability or efficiency can be given.

Made with Metropix ©2025



T: 01624 820600
E: hello@plumproperties.im
W: www.plumproperties.im

Head Office Lettings
1 Athol Street
Douglas
Isle Of Man
IM1 1LD

Agents Note: Whilst every care has been taken to prepare these particulars, they are for guidance purposes only. All measurements are approximate and are for general guidance purposes only and whilst every care has been taken to ensure their accuracy, they should not be relied upon and potential buyers/tenants are advised to recheck the measurements