



4 CASSA FIELD, CHURCH ROAD ONCHAN, IM3 1BU

£1,250 PER MONTH

Situated directly in front of Onchan Village Green, a purpose built modern two bed apartment appointed on the ground floor. This delightful apartment is offered to let on a fully furnished and fully equipped basis and is available immediately.

 **Plum
Properties**

T: 01624 820600
E: hello@plumproperties.im
W: www.plumproperties.im

4 CASSA FIELD, CHURCH

- Available Early July • Fully Furnished and Fully Equipped • Ground Floor Apartment • Outlook Across Onchan Village Green • 2 Double Bedrooms • Modern Shower Room with Walk-In Shower • Spacious Lounge/Diner • Well Equipped Kitchen • Allocated Parking Space • Quiet & Peaceful Location



Summary

Excellent opportunity to let a quiet and peaceful 2 bed ground floor purpose built modern apartment that is offered to rent on a fully furnished and fully equipped basis. This delightful apartment is available early July and benefits from a convenient location set back from Onchan village, yet with a backdrop over Onchan Village Green, making for a pleasant and surprisingly tranquil setting.

Cassa Field is an attractive development comprising eight purpose built apartments. Number 4 has its own private entrance door, stepping into the central Hallway. A generous Lounge/Diner has social and dining seating for four people with dual aspects over the Village Green, behind which a well equipped Kitchen provides rear access to the outside space and car park.

The modern Kitchen incorporates excellent storage through wall and base units with a contrasting counter top. Appliances include a gas hob with electric fan assisted oven below, washer/dryer and tall free standing fridge freezer. A gas fired combination boiler is also housed in the Kitchen.

Travelling across the opposite side of the Hallway are two Double Bedrooms, the principal of which is spacious and conveniently includes a double built-in wardrobe and is furnished with double bed, chest and

bedside tables offering front views across the Green. The second Bedroom includes bunk beds of which the lower is a double bed, offering flexible sleeping arrangements.

An attractive and modern Shower Room with large walk-in shower compliments the ground floor appointment, and also includes a contemporary circular wash basin, WC and wall mounted towel radiator. The apartment also benefits from two Stores, one of which is in the Shower Room and one in the Hallway.

Externally there is a small amount of dedicated space with the apartment that backs onto the car parking area, of which there is one space allocated to each apartment. To the front provides plenty of green and leafy space in the way of the Village Green.

Additional Information

- Available Early July
- Fully Furnished & Equipped
- Gas Fired Central Heating
- Double Glazed
- Sorry, No Pets
- Onchan Primary School - 5 minute walk
- St Ninians High School - 1.5 miles

Directions

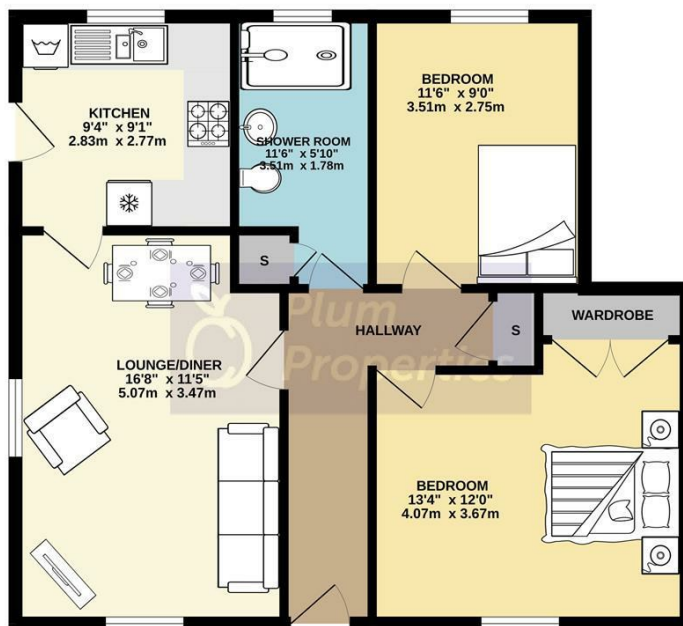
Travelling from Douglas through Onchan Village take the second right turning onto Church Road after

passing both sets of traffic lights. Take the first left onto Cassa Field at the top of Church Road, and No 4 can be identified by our Rent Me board.

4 CASSA FIELD, CHURCH



GROUND FLOOR
683 sq.ft. (63.4 sq.m.) approx.



TOTAL FLOOR AREA : 683 sq.ft. (63.4 sq.m.) approx.
Whilst every attempt has been made to ensure the accuracy of the floorplan contained here, measurements of doors, windows, rooms and any other items are approximate and no responsibility is taken for any error, omission or mis-statement. This plan is for illustrative purposes only and should be used as such by any prospective purchaser. The services, systems and appliances shown have not been tested and no guarantee as to their operability or efficiency can be given.
Made with Metaphor 12/24



T: 01624 820600
E: hello@plumproperties.im
W: www.plumproperties.im

Head Office Lettings
1 Athol Street
Douglas
Isle Of Man
IM1 1LD

01624 820600
hello@plumproperties.im
<http://www.plumproperties.im>

Agents Note: Whilst every care has been taken to prepare these particulars, they are for guidance purposes only. All measurements are approximate and are for general guidance purposes only and whilst every care has been taken to ensure their accuracy, they should not be relied upon and potential buyers/tenants are advised to recheck the measurements