



Plum  
Properties



Plum  
Properties



Plum  
Properties

## FERGY'S HOUSE ORRISDALE FARM

ORRISDALE ROAD, IM9 3AE

£1,250 PER MONTH

Available immediately on a short term let, a 2 bed stone barn is offered to let on a fully furnished and fully equipped basis.

Formulating a courtyard of stone barns on Orrisdale Farm, a working farm, this rural barn offers south facing views over the farm grounds and the convenience of off-road parking

 **Plum  
Properties**

T: 01624 820600  
E: [hello@plumproperties.im](mailto:hello@plumproperties.im)  
W: [www.plumproperties.im](http://www.plumproperties.im)

# FERGY'S HOUSE ORRISDALE

- Manx Stone Barn Situated on Working Farm Available Immediately
- Delightful Courtyard Setting with Off-Road Parking
- Utilities Included in Rent
- Fully Furnished & Fully Equipped
- Two Double Ground Floor Bedrooms
- Separate Bathroom & WC
- Expansive Open Plan Reception Space
- Fully Equipped Kitchen
- Exposed Beams & Feature Stone Wall
- Sorry, No Pets



## Summary

Welcome to this charming stone barn located on Orrisdale Road in Ballasalla. Fergy's House offers a cosy retreat with its upper floor living layout, perfect for those seeking a peaceful countryside escape.

The cottage boasts two inviting bedrooms, providing a comfortable space to unwind after a long day. The bathroom offers convenience with the WC separate. As you step onto the upper floor, you are greeted by a well-appointed and spacious reception room, ideal for relaxing or entertaining guests, with exposed stone feature wall and A frames on show.

Fully furnished and equipped, this property is ready for you to move in without any hassle. Whether you're looking for a short-term or winter let, this cottage caters to your needs.

Surrounded by a courtyard of charming stone barns on a working farm, you'll experience the idyllic rural lifestyle. The 524 sq ft of living space provides ample room for your daily activities while maintaining a cosy atmosphere.

Don't miss the opportunity to make this converted barn your home and enjoy the serene surroundings of Ballasalla. Book a viewing today and step into your own piece of countryside paradise.

## Additional Information

- Double Glazed
- Oil Fired Central Heating
- Heating, Hot Water & Electricity Included in Rent
- Exposed Beams
- Countryside Views
- Off-Road Parking
- Sorry, No Pets

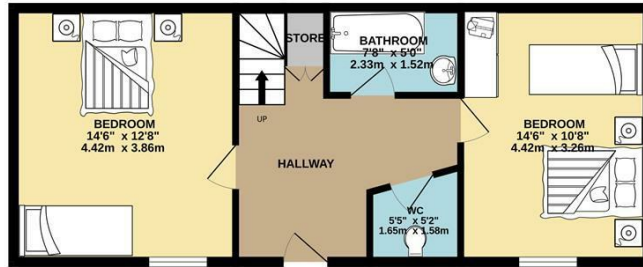
## Directions

Travelling north out of Ballasalla in the direction of Douglas, continue on Castletown Road. Take the left turn shortly prior to reaching Blackboards onto Orrisdale Road. The entrance to the cottages can be found by taking the second left turning, identifiable by signage to Orrisdale Farm Cottages. Continue to the Courtyard whereby a member of the Plum Properties team will meet you.

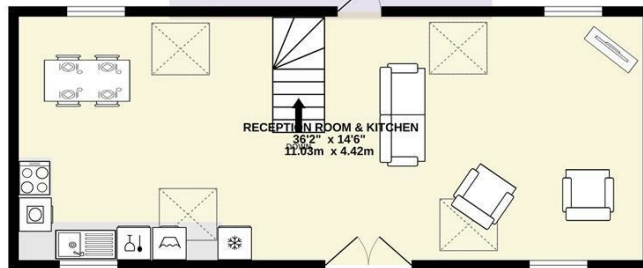
# FERGY'S HOUSE ORRISDALE



GROUND FLOOR  
524 sq.ft. (48.7 sq.m.) approx.



1ST FLOOR  
524 sq.ft. (48.7 sq.m.) approx.



TOTAL FLOOR AREA: 1049 sq.ft. (97.4 sq.m.) approx.  
Whilst every attempt has been made to ensure the accuracy of the floorplan contained here, measurements of doors, windows, rooms and any other items are approximate and no responsibility is taken for any error, omission or mis-statement. This plan is for illustrative purposes only and should be used as such by any prospective purchaser. The services, systems and appliances shown have not been tested and no guarantee as to their operability or efficiency can be given.  
Made with Metriplex 20224



T: 01624 820600  
E: [hello@plumproperties.im](mailto:hello@plumproperties.im)  
W: [www.plumproperties.im](http://www.plumproperties.im)

Head Office Lettings  
14 Tynwald Street  
Douglas  
Isle Of Man  
IM1 1BG

01624 820600  
[hello@plumproperties.im](mailto:hello@plumproperties.im)  
<http://www.plumproperties.im>

Agents Note: Whilst every care has been taken to prepare these particulars, they are for guidance purposes only. All measurements are approximate and are for general guidance purposes only and whilst every care has been taken to ensure their accuracy, they should not be relied upon and potential buyers/tenants are advised to recheck the measurements