



## 11 GLEN DARRAGH GARDENS

GLEN VINE, IM4 4DD

£3,575 PCM

Available mid May, a five bed executive detached property stretching to nearly 4,000 square feet including detached double garage with studio above offered for let on an unfurnished and pet friendly basis.

 **Plum  
Properties**

T: 01624 820600  
E: [hello@plumproperties.im](mailto:hello@plumproperties.im)  
W: [www.plumproperties.im](http://www.plumproperties.im)

# 11 GLEN DARRAGH GARDENS

- Available Mid May 2024
- Unfurnished 5 Bed Detached House
- Generous Property stretching to approaching 4,000 square feet
- Spacious Flexible Reception Rooms
- Dining Kitchen with Garden Aspect
- Separate Study
- 3 En Suite Bedrooms & Family Bathroom
- Double Garage with Studio Over
- Pets Considered, Subject to Increased Deposit
- Large Plot in Sought After Location



## SUMMARY

Available mid May 2024, a five bed five bath executive detached property offered for let on an unfurnished basis.

This modern detached double fronted executive property stretching to nearly 4,000 square feet located on a private and picturesque country lane in the popular and family friendly village of Glen Vine.

Glen Darragh Gardens is a highly desirable development of fifteen executive properties. The area is both quiet and peaceful and benefits from lovely rural views. It is conveniently located across the road from the local primary school, whilst the centre of Douglas is easily reachable within a ten minute drive and the airport within 15 minutes. Positioned outside of the TT course, the property is not disrupted during the various motorcycle festivals and road closures.

On the upper floor of the property there are five double bedrooms, three of which benefit from en suite facilities and a Family Bathroom. Many of the Bedrooms include custom built wardrobes. The ground floor has an open plan feel and comprises a range of generous reception rooms and with a Dining Kitchen with Utility Room. Three rooms have double doors leading to a large South West facing secure rear garden.

Externally a driveway provides off road parking for multiple vehicles. A double garage with external stairs and Studio on the upper floor has its own bathroom. Front and south west facing secure rear gardens laid to lawn.. The landlord will consider pets, subject to an increased deposit.

## ADDITIONAL INFORMATION

- Pet Friendly
- uPVC Double Glazed throughout
- Oil Fired Central Heating
- Appliances Include Integrated Dishwasher, American Fridge Freezer and Gas Hob.
- Located on a Leafy Street Containing 15 Executive Properties
- Fibre Broadband Available in Area
- Pets Considered, Subject to Increased Deposit
- Tenant to Pay Rates and Oil Deposit
- Primary School Catchment: Marown School, Glen Vine
- Secondary School Catchment: Queen Elizabeth II High School, Peel

## DIRECTIONS

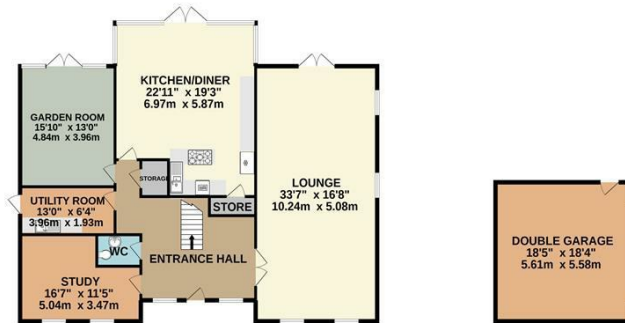
Travelling from along the TT course from the Quarterbridge roundabout, continue through Braddan, beyond Union Mills and into Glen Vine. Continue beyond the traffic lights at Ballagarey, and turn left at the next set of lights onto Glen Darragh Road, and take the second left onto Glen Darragh Gardens where number 11 can be found on the right hand side.



# 11 GLEN DARRAGH GARDENS



GROUND FLOOR  
2047 sq.ft. (190.2 sq.m.) approx.



**Plum Properties**  
1ST FLOOR  
1937 sq.ft. (179.9 sq.m.) approx.



TOTAL FLOOR AREA: 3984 sq ft. (370.1 sq.m.) approx.  
Whilst every attempt has been made to ensure the accuracy of the floorplan contained here, measurements of floors, windows, doors and any other items are approximate and no responsibility is taken for any error, omission or mis-statement. This plan is for illustrative purposes only and should be used as such by any prospective purchaser. The services, systems and appliances shown have not been tested and no guarantee as to their operability or efficiency can be given.  
Made with Metropix 100022



T: 01624 820600  
E: hello@plumproperties.im  
W: www.plumproperties.im

Head Office Lettings  
14 Tynwald Street  
Douglas  
Isle Of Man  
IM1 1BG

01624 820600  
hello@plumproperties.im  
http://www.plumproperties.im

Agents Note: Whilst every care has been taken to prepare these particulars, they are for guidance purposes only. All measurements are approximate and are for general guidance purposes only and whilst every care has been taken to ensure their accuracy, they should not be relied upon and potential buyers/tenants are advised to recheck the measurements