



MAIN ROAD IM4 1EJ

£2,350 PER MONTH

Available immediately, a substantial and beautifully presented 5 bed farmhouse offered to let on an unfurnished basis. Located within ten minutes of Douglas town centre and Castletown in the opposite direction. The landlord will consider pets subject to an increased security deposit.

 **Plum
Properties**

T: 01624 820600
E: hello@plumproperties.im
W: www.plumproperties.im

MAIN ROAD

- Beautifully Presented 5 Bed Farmhouse • Available Immediately • Unfurnished • Two En Suite Bedrooms and Family Bathroom • Open Plan Dining Kitchen with Log Burner • Lounge and Study • Generous Conservatory • Spacious Secure Grounds • Off Road Parking • Pets Considered



Summary

Available immediately, a substantial and beautifully presented 5 bed farmhouse offered to let on an unfurnished basis. Located within ten minutes of Douglas town centre and Castletown in the opposite direction. The landlord will consider pets subject to an increased security deposit.

Full suite of images to follow shortly

Directions

Travelling in a southerly direction out of Douglas, from the Quarterbridge head along New Castletown Road for 4.3 miles before turning into the car park for the Santon Motel situated on your left hand side. Continue to the far end of the car park, whereby the entrance to the farmhouse can be located.

MAIN ROAD







MAIN ROAD

ADDITIONAL INFORMATION

Local Authority –

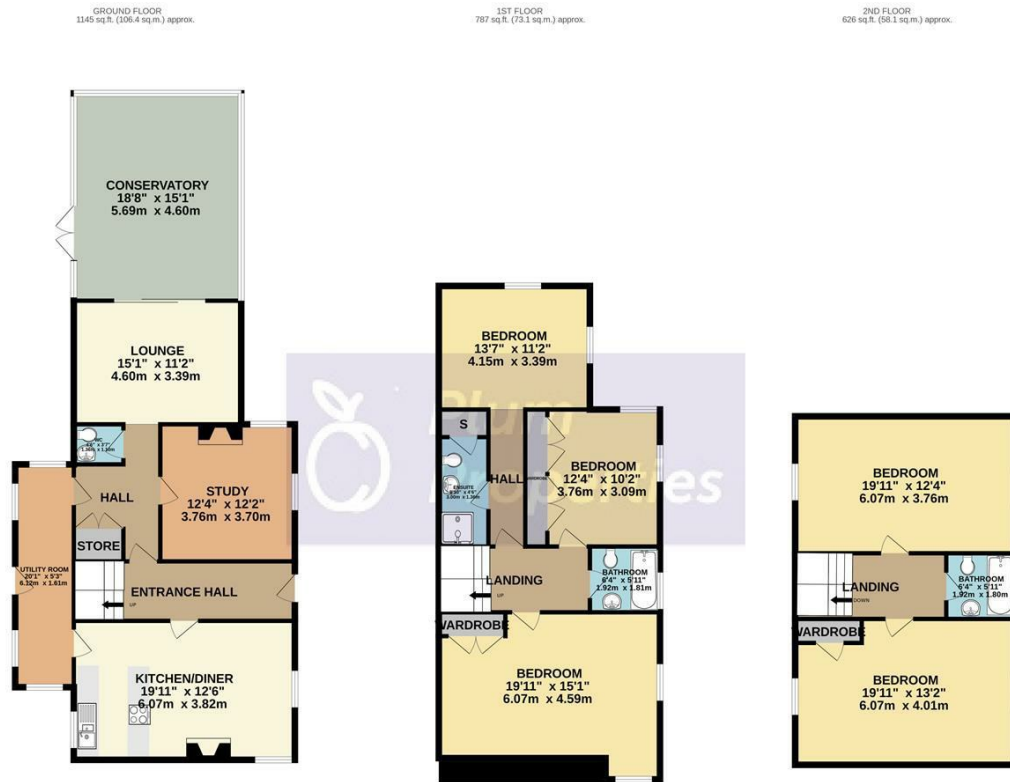
Council Tax – Band

Viewings – By Appointment Only

Floor Area – 0.00 sq ft

Tenure –





TOTAL FLOOR AREA: 2558 sq.ft. (237.6 sq.m.) approx.
 Whilst every attempt has been made to ensure the accuracy of the floorplan contained here, measurements of doors, windows, rooms and any other items are approximate and no responsibility is taken for any error, omission or mis-statement. This plan is for illustrative purposes only and should be used as such by any prospective purchaser. The services, systems and appliances shown have not been tested and no guarantee as to their operability or efficiency can be given.
 Made with Metropix ©2024



T: 01624 820600
 E: hello@plumproperties.im
 W: www.plumproperties.im

Head Office Lettings
 14 Tynwald Street
 Douglas
 Isle Of Man
 IM1 1BG

01624 820600
 hello@plumproperties.im
 http://www.plumproperties.im

Agents Note: Whilst every care has been taken to prepare these particulars, they are for guidance purposes only. All measurements are approximate and are for general guidance purposes only and whilst every care has been taken to ensure their accuracy, they should not be relied upon and potential buyers/tenants are advised to recheck the measurements