



Plum  
Properties



Plum  
Properties



Plum  
Properties

## 2 PLEASINGTON VILLAS PEEL ROAD DOUGLAS, IM1 4NN

£239,950  
FREEHOLD

Luxury purpose built ground floor apartment set close to the centre of Douglas comprising lounge, kitchen, 2 bedrooms (master ensuite), bathroom, external storage area and 2 allocated parking spaces.

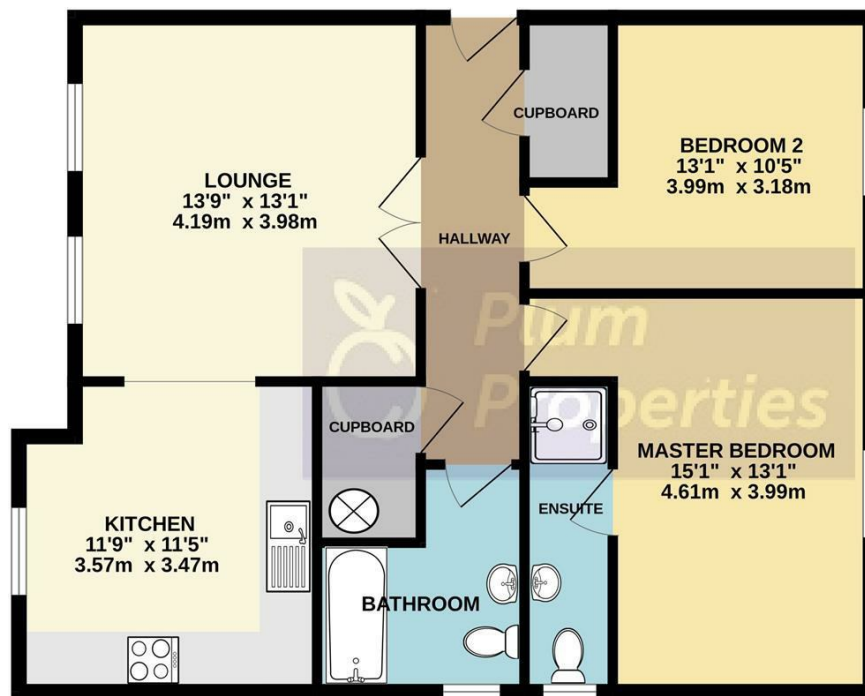
 **Plum  
Properties**

T: 01624 820600  
E: [hello@plumproperties.im](mailto:hello@plumproperties.im)  
W: [www.plumproperties.im](http://www.plumproperties.im)

- Superb Purpose Built Apartment • Very Convenient Central Town Location • Ground Floor Position • 2 Double Bedrooms (1 En-Suite Shower Room) • Low Tariff Electric Heating • Wired for Satellite • uPVC Double Glazing
- Allocated Private Parking for 2 Cars • Large Private Storeroom



**GROUND FLOOR**  
860 sq.ft. (79.9 sq.m.) approx.



TOTAL FLOOR AREA : 860 sq.ft. (79.9 sq.m.) approx.

Whilst every attempt has been made to ensure the accuracy of the floorplan contained here, measurements of doors, windows, rooms and any other items are approximate and no responsibility is taken for any error, omission or mis-statement. This plan is for illustrative purposes only and should be used as such by any prospective purchaser. The services, systems and appliances shown have not been tested and no guarantee as to their operability or efficiency can be given.  
Made with Metropix ©2023

Agents Note: Whilst every care has been taken to prepare these particulars, they are for guidance purposes only. All measurements are approximate and are for general guidance purposes only and whilst every care has been taken to ensure their accuracy, they should not be relied upon and potential buyers/tenants are advised to recheck the measurements

Head Office Sales  
14 Tynwald Street  
Douglas  
Isle Of Man  
IM1 1BG



T: 01624 820600  
E: [hello@plumproperties.im](mailto:hello@plumproperties.im)  
W: [www.plumproperties.im](http://www.plumproperties.im)