





SUMMARY

Breathtaking sea and coastal views from this modernised 6 bedroom townhouse set on the edge of beautiful Bay Ny Carrickey beach only 7km from Ronaldsway Airport. The property has undergone extensive refurbishment throughout and has no onward chain. It comprises lounge, dining area, contemporary bespoke kitchen, boot/changing room, 6 bedrooms and 3 modern bathrooms.

FEATURES

- Stunning Coastal Property
- Sea Views
- Refurbished
- 6 Bedrooms
- Lounge, Dining Area
- Contemporary Bespoke Kitchen
- 3 Modern Bathrooms
- Boot/Changing Room
- Only 7km from Ronaldsway Airport
- No Onward Chain

DETAILS

Sea Crest is positioned at the Port St Mary end of Gansey Bay and has an uninterrupted outlook straight across the beach and out to sea.

The property has just had refurbishment completed including a bespoke kitchen which is open plan to the dining area and lounge which take advantage of the views via a large box bay window. There are 3 modern bathroom suites and 6 bedrooms. There is also a boot/changing room with a mosaic tiled floor providing access from the front door to cater for wet swimmers, surfers or pets returning from the beach to the home.



The lower floor is finished mainly in wood pattern laminate, however, mosaic tiling and quarry tiling have been retained where possible.

The upper floors are carpeted throughout except for the bathrooms, which both have a modern tile finish.

From the first and second floors the views are breathtaking with 2 of the bedrooms having large box bay windows to take maximum advantage.

To the rear there is an access lane and a private fully enclosed yard, which is laid to lawn, and an outhouse of brick construction with an external wc.

Sea Crest represents excellent accommodation for families looking to live beside and enjoy the beach and will also appeal to visitors to the island looking for a permanent location with close proximity to the airport which they can lock up and leave.

DIRECTIONS

From Ronaldsway Airport continue south west on the A5 through Castletown for 6.5km until reaching Gansey Bay with the Shore Hotel on the right side. Sea Crest is a further 500 metres along on the right side at the end of the bay.

FURTHER INFORMATION

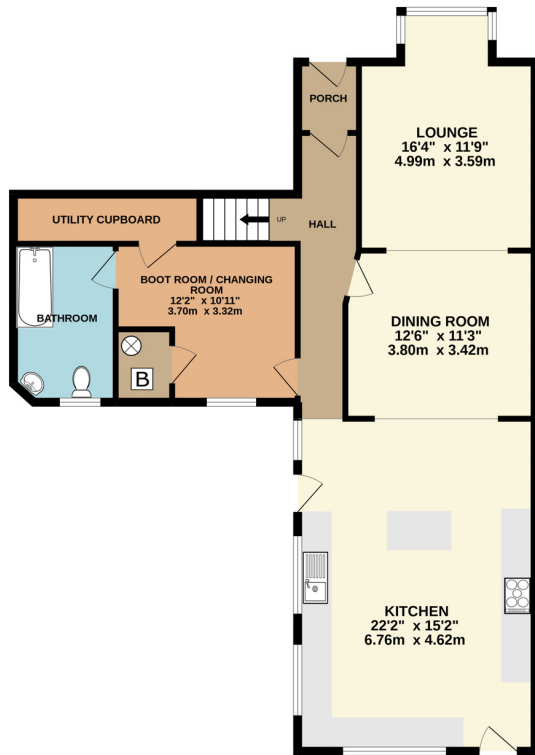
For additional details, to arrange a viewing appointment, or to make an offer to buy this property contact Bruce Cobburn on bruce@plumproperties.im or call 07624 202823.



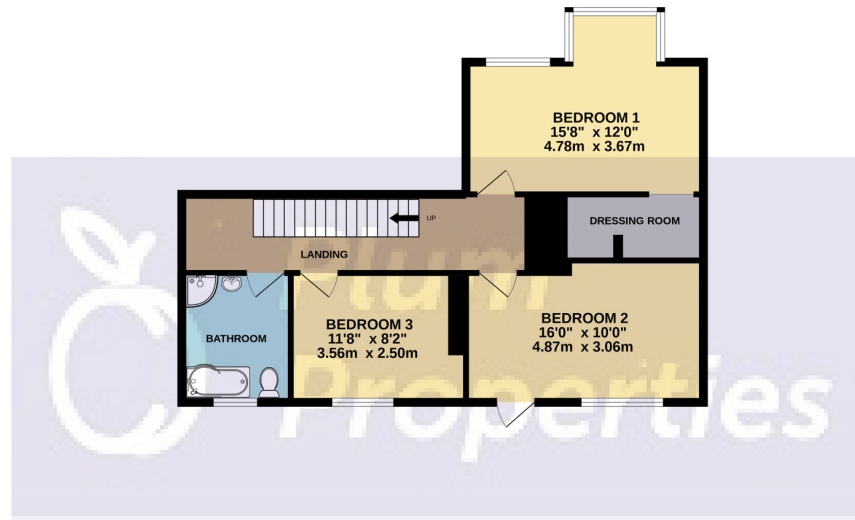




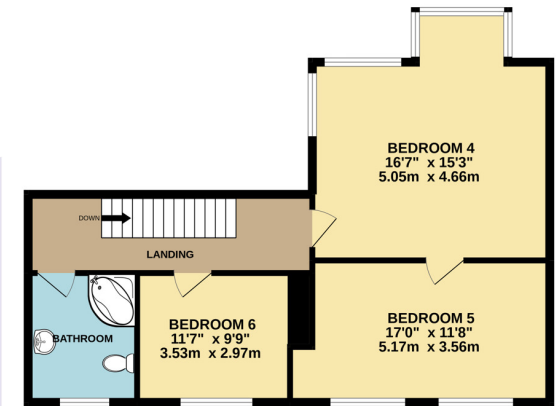
GROUND FLOOR



1ST FLOOR



2ND FLOOR



Whilst every attempt has been made to ensure the accuracy of the floorplan contained here, measurements of doors, windows, rooms and any other items are approximate and no responsibility is taken for any error, omission or mis-statement. This plan is for illustrative purposes only and should be used as such by any prospective purchaser. The services, systems and appliances shown have not been tested and no guarantee as to their operability or efficiency can be given.
 Made with Metropix ©2022