



161 Westbourne Street

Hove, BN3 5FB

£2,450 Per month

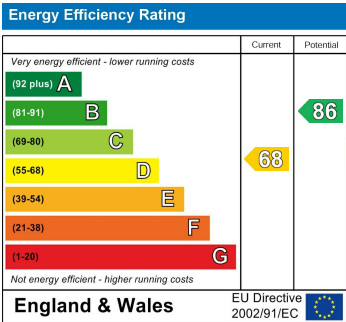
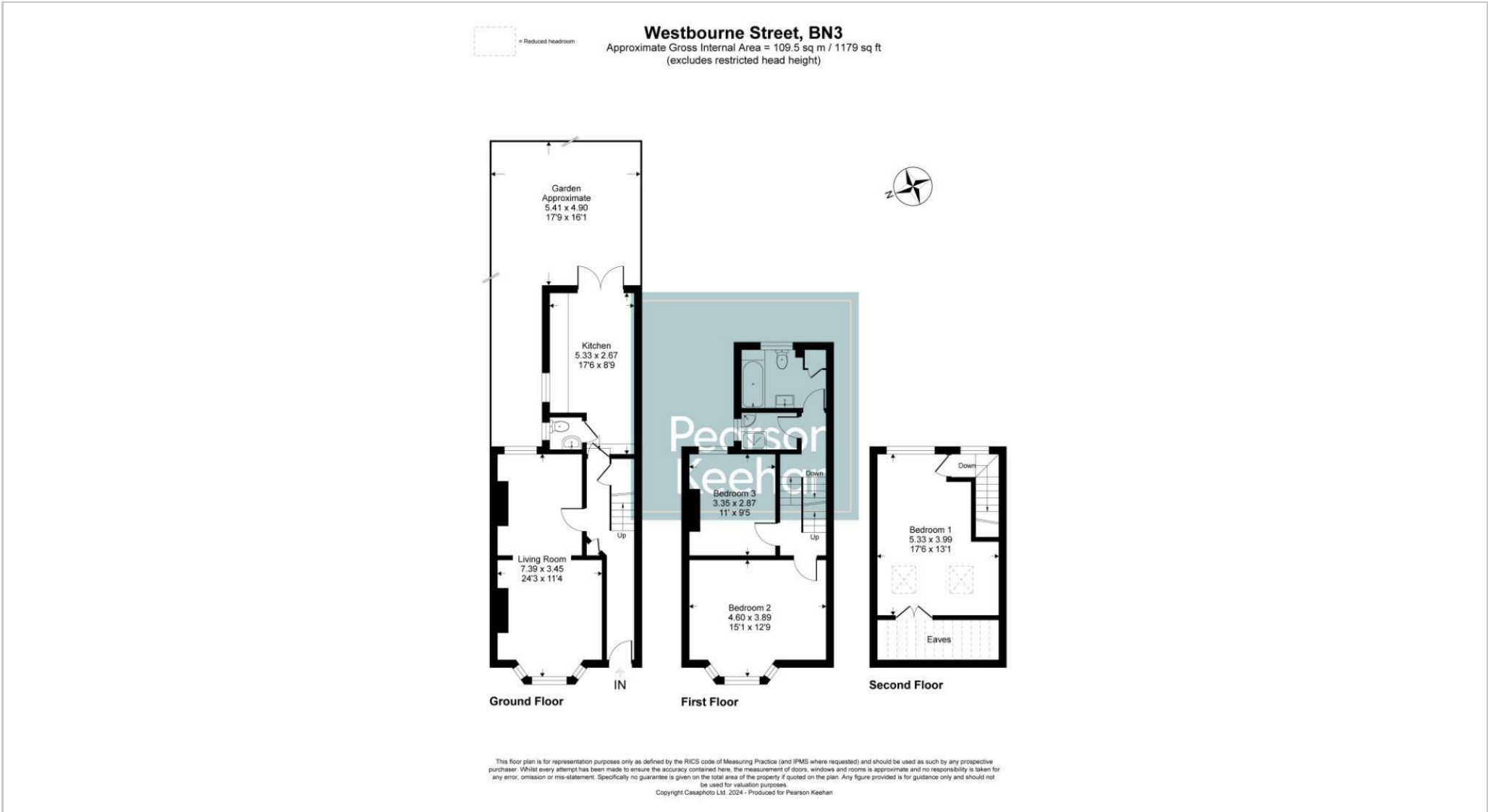
A beautifully presented and homely three bedroom Poets Corner house that spans over three storeys and offers two bathrooms and private patio garden.

Offered to the market as furnished, the property comprises of a stylish and spacious through living room which boasts trendy plantation shutters and some charming original features. To the rear of the ground floor is a WC and an elegant kitchen/dining room that comes complete with modern appliances and French patio doors that provide access out to the paved, low maintenance garden.

Moving upstairs to the first floor, two double bedrooms can be found along with a contemporary bathroom and a utility room that provides further shower facilities. Lastly, completing the accommodation on the top floor is another expansive and bright double bedroom.

In terms of location, Westbourne Street is set in the trendy and highly desirable Poets Corner district of Hove, perfectly positioned close to a number of local amenities including a wide range of coffee shops, cafes, gastro pubs, restaurants and a short walk to the seafront. Furthermore, located nearby are several excellent local schools as well as both Aldrington and Hove Stations, providing direct links to London, Gatwick and Brighton City Centre, making this lovely home ideal for both families and commuters alike.

The property is available from early April.



Pearson
Keehan