

22 Canfield Close

Brighton, BN2 4DJ

Offers in excess of £375,000

Situated in a popular and well-established neighbourhood, this charming three-bedroom, detached bungalow offers spacious and flexible accommodation ideal for family living, the property is both welcoming and versatile.

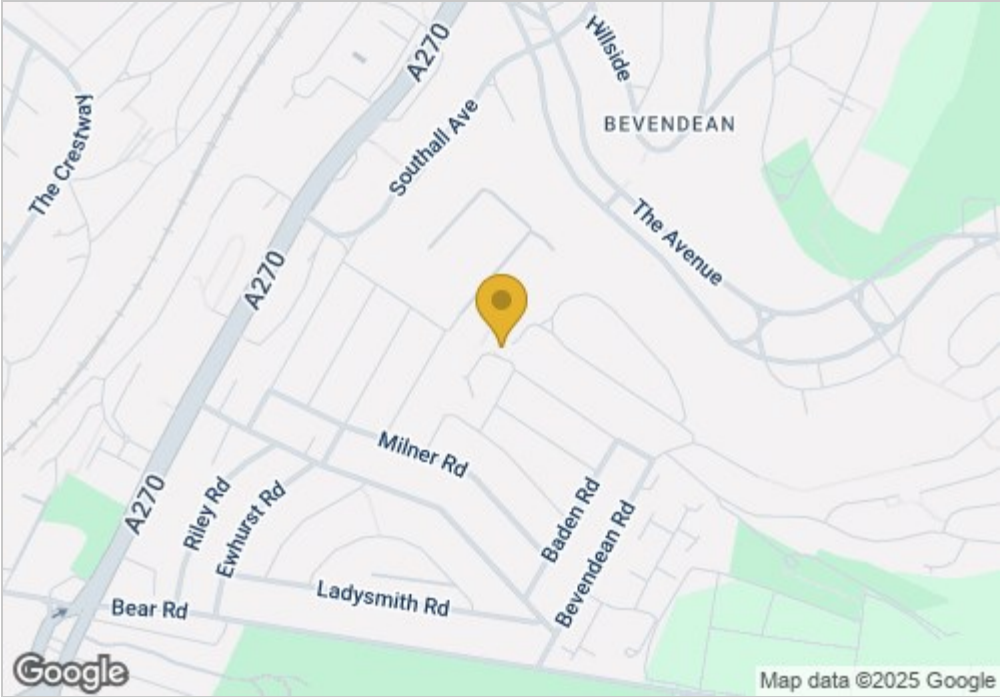
Upon entering, you are greeted by a bright and airy open-plan reception area and stylish kitchen. The kitchen is fitted with modern cabinetry, integrated appliances, and opens out onto a light-filled conservatory—a versatile space for dining, entertaining, or simply relaxing.

The bungalow boasts three generously sized bedrooms, each benefiting from an abundance of natural light. A modern, well-appointed family bathroom completes the interior.

Outside, the home features a wrap-around garden with lawn and a paved patio—perfect for alfresco dining or unwinding while taking in the views towards Brighton.

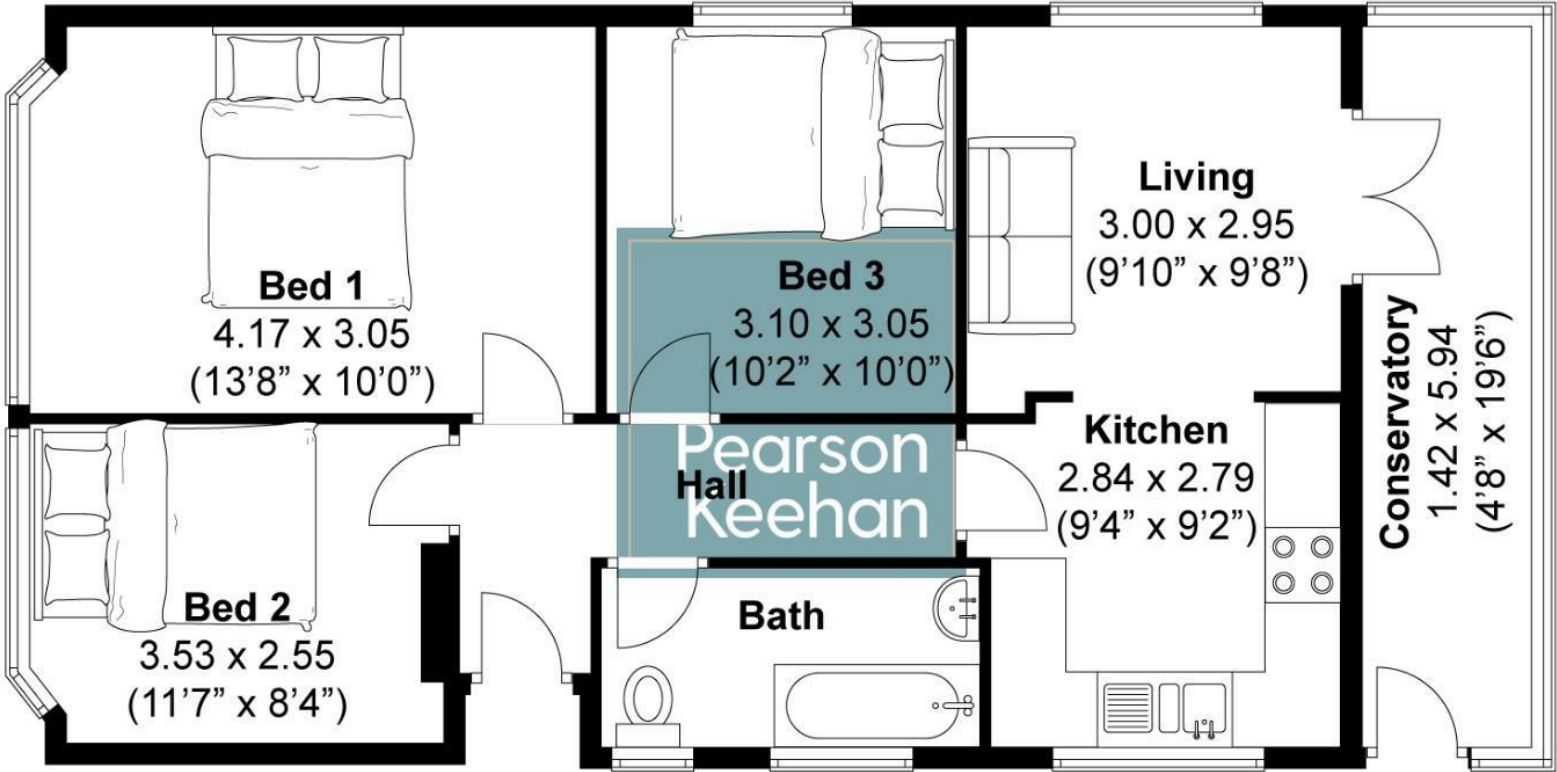
Ideally situated close to a range of local amenities, and excellent transport links to Brighton and surrounding areas, this home is perfectly positioned for convenience and lifestyle. The area enjoys a strong sense of community and is surrounded by green spaces, making it a wonderful choice for families.

The property is sold with the added benefit of no onward chain.



Canfield Close, Brighton

Approximately 67.36 sqm (725 sqft)



Disclaimer:
The measurements are approximate and are for illustration purposes only.
The dimensions are measured internally and in metres and feet. We do not take any responsibility for errors and/or omissions.
If you require further verification please discuss with the buyer/owner of the property.

