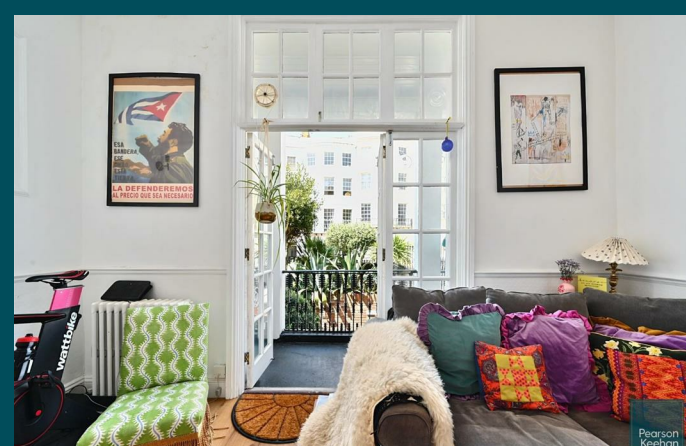
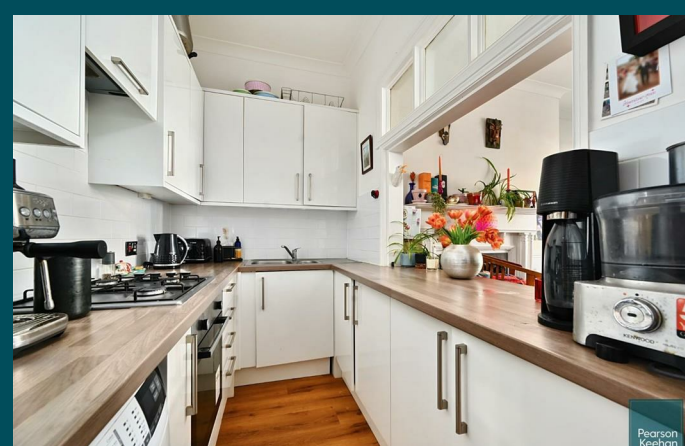




27 Norfolk Square  
Brighton, BN1 2PD

Pearson  
Keehan





# 27 Norfolk Square

Brighton, BN1 2PD

£350,000 - £375,000

Guide Price: £350,000 - £375,000

A beautifully presented, two-bedroom apartment with a west-facing balcony, offering an enviable lifestyle, with a wealth of amenities on your doorstep. From popular coffee shops and vibrant bars to a diverse range of restaurants, all just a short distance from the seafront.

Inside, the apartment features a generous living area that flows seamlessly into a well-proportioned fitted kitchen and out onto a private balcony — the perfect place to relax or enjoy al fresco dining. The kitchen is finished in sleek white gloss cabinetry, complementing the contemporary design throughout. The property also includes a stylish bathroom and two well-sized bedrooms, offering comfortable and flexible accommodation.

A standout feature is the westerly-facing balcony, a tranquil space ideal for unwinding or entertaining outdoors. Additionally, residents benefit from access to the well-maintained communal front garden.

Norfolk Square offers excellent access to local conveniences that the bustling Western Road has to offer, including popular artisan coffee shops, restaurants, bars and supermarkets. Brighton city centre and the seafront are both just a short distance away and excellent transport links provide easy access to Brighton Railway Station, making this an ideal choice for commuters.

