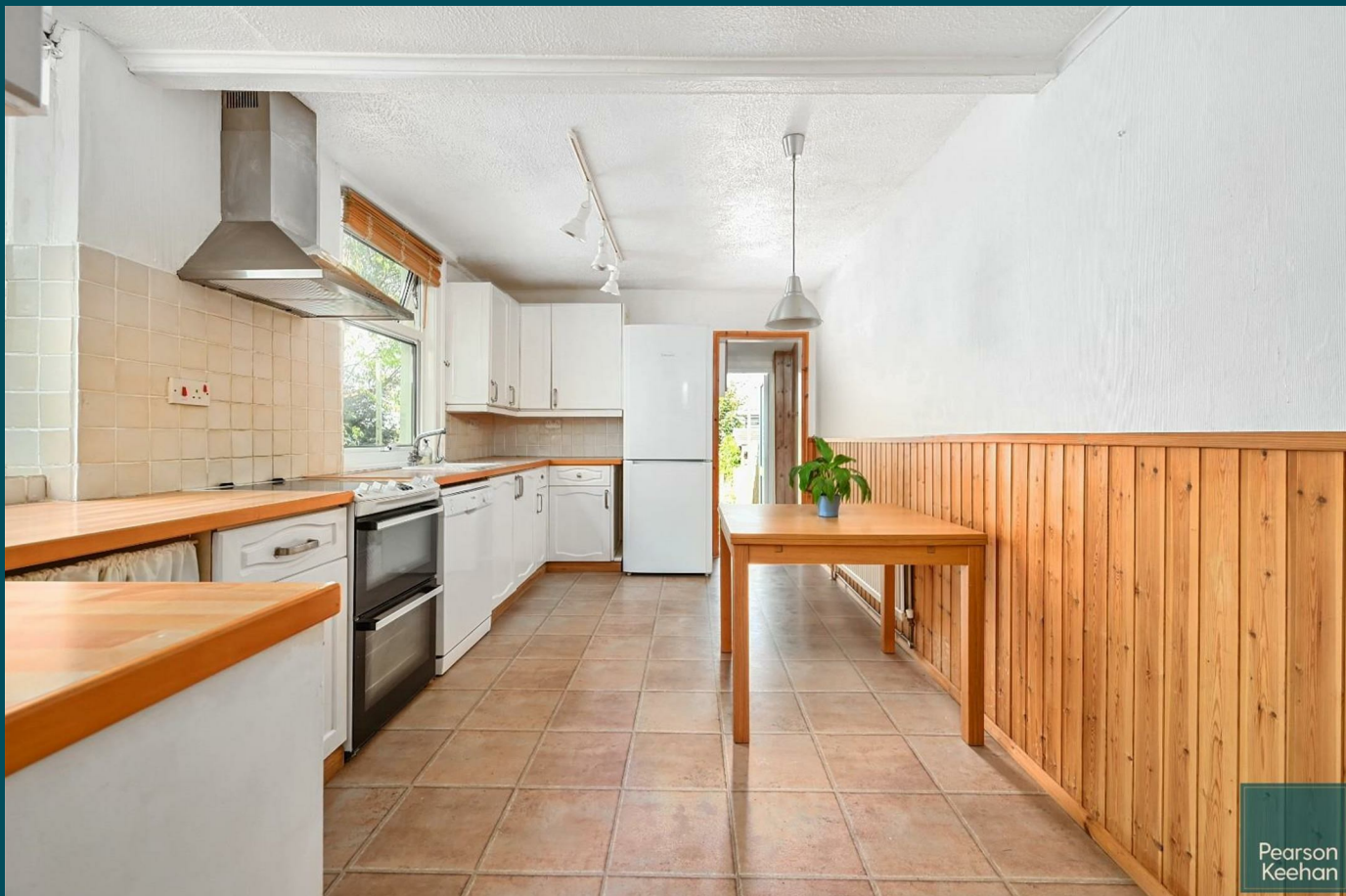




101 Lowther Road
Brighton, BN1 6LH

Pearson
Keehan



Pearson
Keehan

101 Lowther Road

Brighton, BN1 6LH

Offers in excess of £650,000

A charming three bedroom Victorian mid-terraced house with west facing garden that is nestled between the highly sought-after Fiveways district and Preston Park. Close to a host of well-regarded schools and trendy local amenities, the property has been the subject of some light refurbishment and is being sold with no onward chain.

Stepping inside this family home, you are immediately greeted with the original floorboards that have been sympathetically restored to their former glory and flow effortlessly from the hallway through to the expansive living room. The living room enjoys lovely high ceilings along with some original features and sheds in an abundance of natural light via it's dual aspect windows. To the rear of the ground floor, you have the generously sized kitchen/diner which provides access out to the garden.

Moving upstairs to the first floor, a modern floor-to-ceiling tiled shower room can be found along with three double bedrooms. There is scope to extend into the loft space where similar properties have created a further bedroom with en suite shower room (STNC).

Outside, the garden is of the favoured south-westerly aspect where you can enjoy all day sunshine. A raised decked area leads down to a low maintenance artificial lawn, which in turn, leads to a paved area.

Lowther Road lies within a popular residential area of Brighton and has a wonderful community feel. Within close proximity is the vibrant Fiveways district where you can enjoy a variety of trendy coffee shops, restaurants and other independent stores. Several excellent schools are also nearby along with a number of easily accessible transport links.

