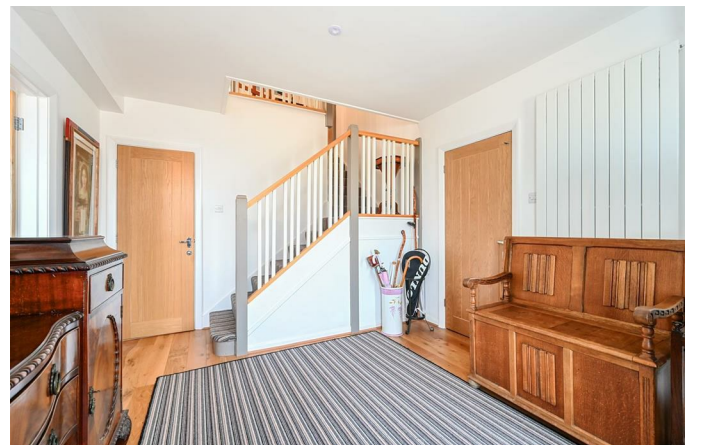




14 Hillside Way  
Brighton, BN1 5EE



# 14 Hillside Way

Brighton, BN1 5FE

## Offers in excess of £1,000,000

A beautifully presented five-bedroom detached residence situated in the desirable Withdean area of Brighton, featuring a splendid swimming pool nestled within the garden's sun-soaked south-westerly aspect.

Spanning over three storeys, the property has been carefully extended to offer a vast amount of versatile living space with accommodation being just shy of 2,000 sq ft. Serving the ground floor, a spacious entrance hallway provides access to a generously sized bedroom, shower room and the garage, which could be converted into a habitable space, as per previous planning application (BH2019/00346).

Ascending to the first floor, you'll discover three bright bedrooms positioned towards the front of the house. Bedroom two boasts en-suite shower room facilities and a spacious walk-in wardrobe. Towards the rear, you'll find the expansive kitchen/dining/living room, stretching across the property's width and enhanced by bi-folding windows and doors, granting access to the charming garden.

Continuing to the top floor, a majestic bedroom awaits, featuring a luxurious en suite bathroom and scenic views of the garden.

The garden stands out as a prominent feature of this delightful home, boasting a sought-after south-west orientation and offering an ideal setting for family gatherings and socializing with friends. For leisurely summer days, the heated swimming pool provides additional family enjoyment.

The property also benefits from eco-friendly factors with solar panels and EV charging point installed. Off-street parking to the front of the house enables off-street parking for numerous vehicles.

In terms of location, Hillside Way, is a tranquil residential address set within the highly sought-after Withdean district of Brighton close to a number excellent transport links and well-regarded local schools. Brighton & Hove's main thoroughfares are within easy reach along with a number of beautiful green spaces.

