



DAVIDSONS
HOMES

2 BEDROOM
DETACHED
HOME

An exclusive opportunity to own
a desirable new property that
provides comfortable living with
craftsmanship of the highest calibre.

SM232G-4
[1060]
Rev C00



DAVIDSONS HOMES

2 BEDROOM DETACHED HOME

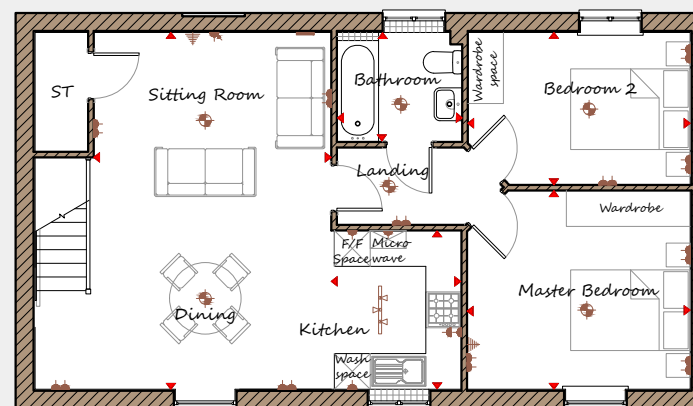
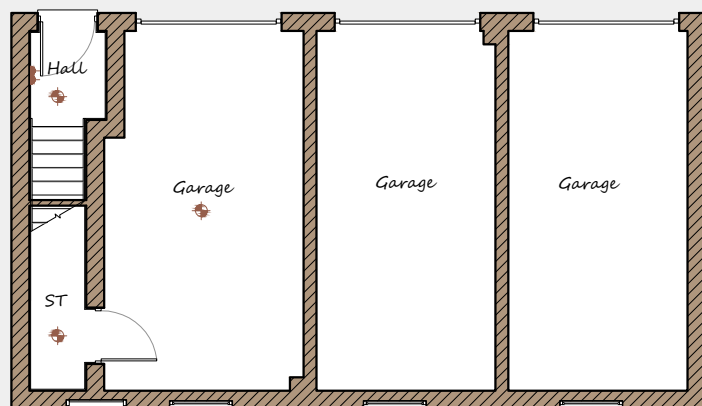


Davidsons Homes.

Wilson House, Leicester Road,
Ilkeston, Leicestershire, LE15 7HP

T: 01530 261 444

www.davidsonsgroup.co.uk



First Floor

Sitting Room/Dining	3980	x	5975	13'1"	x	19'7"
Kitchen	2185	x	2660	7'2"	x	8'9"
Master Bedroom	3735	x	3330	12'3"	x	10'11"
Bedroom 2	3725	x	2555	12'3"	x	8'5"
Bathroom	2100	x	1835	6'11"	x	6'0"

Key	Dimension location	External light	Ceiling light	Downlight
3 bar light	Radiator	TV aerial	Media plate	
Double socket	High double socket	Low socket	High socket	

This is an artistic interpretation, variations in elevational styles, finishes and floor plans may vary. Please consult with your Sales Manager for details of the development and plot. Measurements provided are within + or - 50mm.