



FOR SALE

TYTHE BARN

CRESSAGE | SHROPSHIRE

Offers In The Region Of £525,000 Freehold



PRESTIGE

BY MANNLEYS



PRESTIGE

BY MANNLEYS

P

repare to be enchanted by this captivating detached barn conversion, steeped in history and character. Dating back to the late 17th Century, this Grade II listed building is nestled within approximately 0.3 acres of picturesque landscape in the charming village of Cressage, offering excellent access to both Shrewsbury, Telford, and motorway connections.

Overlooking sprawling farmland, this barn boasts a large detached garage with space above, perfect for a home office or games room. Step inside to discover a blend of rustic charm and modern luxury. Exposed wood beam structures tell the story of its past, while recent updates include a bespoke fitted kitchen, a guest WC, and a stylish first-floor bathroom. The ground floor offers three generously sized rooms, including a lounge, a contemporary kitchen with bifold doors, a dining hallway with bifold doors and a ground floor wc.





FEATURES

- Superb Detached Grade II Listed Barn Conversion with Detached Garage with Room Above
- Highly Sought After Village Location
- Great Access For Both Shrewsbury & Telford & M54 Motorway
- Outstanding Open Plan Contemporary Kitchen with Bifold Doors
- Sitting Room & Separate Dining Room with Vaulted Ceilings and Bifold Doors
- Stunning Mezzanine Landing with Glass Balustrades,
- Feature Glass and Oak Staircase & Airsource Heating
- Viewing A Must



PRESTIGE

BY MANNLEYS

Upstairs, three delightful beamed bedrooms await, complemented by a stunning mezzanine landing with glass balustrades, linking the bedrooms and bathroom.

Outside, the property features a fabulous garden, primarily lawned with a sun terrace, ideal for outdoor relaxation. A long driveway provides ample parking space and leads to the garage. A charming five-bar gate welcomes you, while a dog pen and terrace add to the charm. Adjacent to the home, a forecourt garden with a stone-covered terrace and barbecue area offers the perfect setting for al fresco dining. A water feature enhances the ambiance, while mature shrubs adorn the lawned garden, offering breathtaking views over the surrounding farmland.

Don't miss this opportunity to create your own tranquil haven in the heart of Cressage.





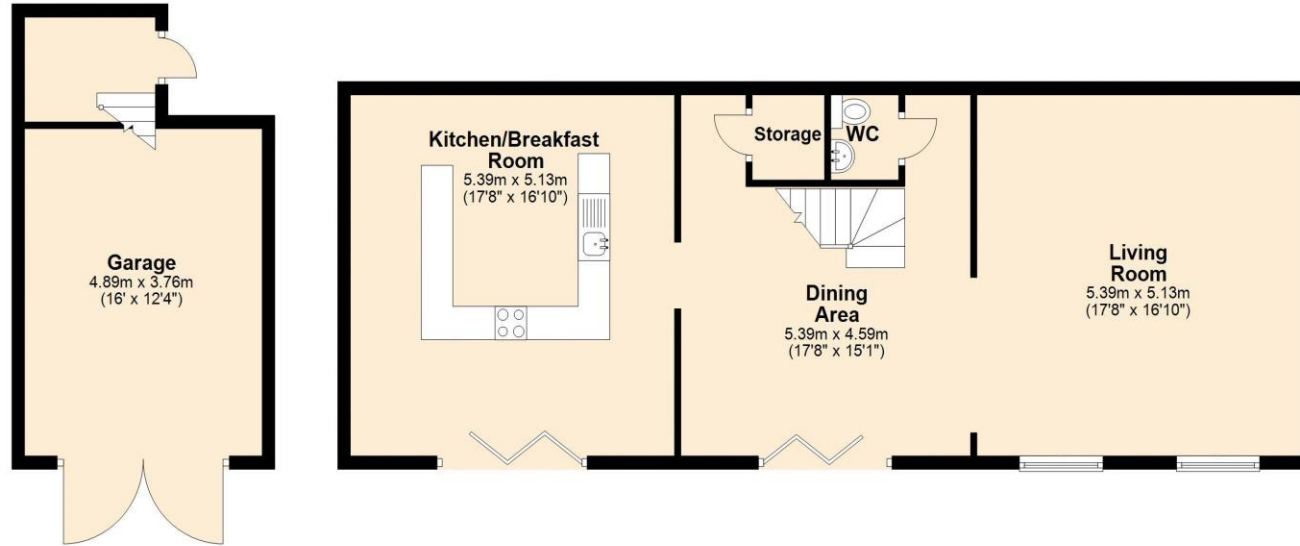




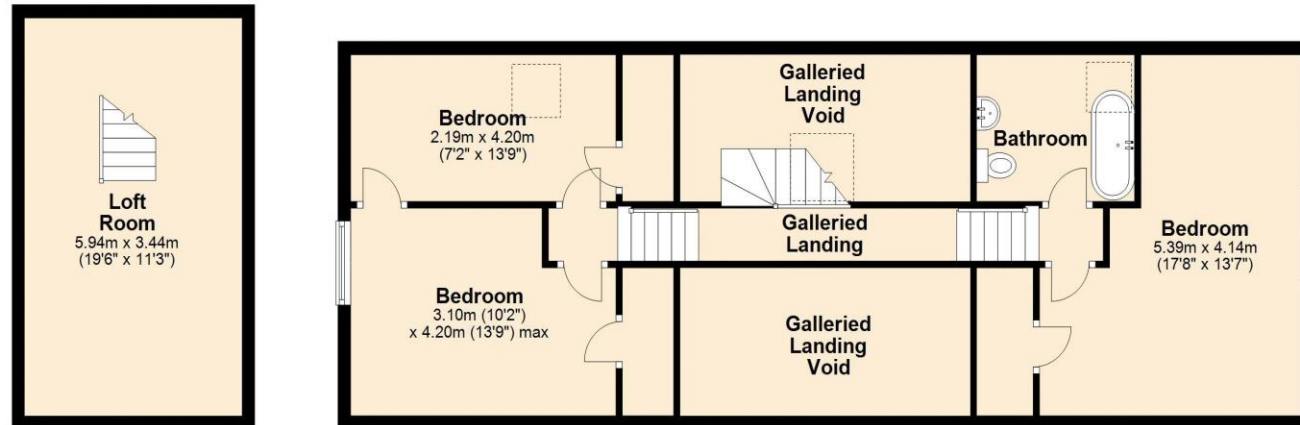




Ground Floor
Approx. 102.9 sq. metres (1107.7 sq. feet)



First Floor
Approx. 101.5 sq. metres (1092.6 sq. feet)



Total area: approx. 204.4 sq. metres (2200.3 sq. feet)

All images used are for illustrative purposes only and are intended to convey the concept and vision for the development/apartments/houses. They are for guidance only, may alter as work progresses and do not necessarily represent a true and accurate depiction of the finished product and specification may vary.
Plan produced using PlanUp.



PRESTIGE

BY MANNLEYS

23a Market Street, Wellington, Telford, TF1 1DT
01952 245064 • prestige@mannleysproperty.co.uk
mannleysproperty.co.uk