



Rye Hill Park, SE15 | £300,000

02087029666

[peckham@pedderproperty.com](mailto:peckham@pedderproperty.com)

**pedder**  
We live local





# In General

- One bedroom
- One bathroom
- Offered chain free
- Fantastic location
- Excellent transport links

# In Detail

This bright and modern one bedroom, one bathroom home offers a well balanced blend of space and comfort.

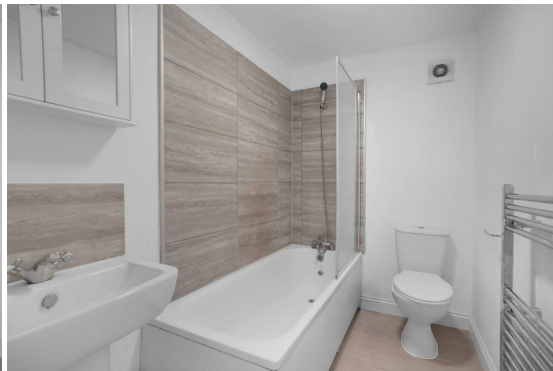
The property features a generous living area filled with natural light, alongside a sleek and contemporary kitchen. A well proportioned double bedroom and a family sized bathroom complete the layout, making this an ideal first time purchase or investment opportunity.

Enviably positioned between Nunhead, Peckham Rye and East Dulwich stations, the property benefits from excellent transport links, as well as convenient cycle routes and bus connections. Peckham Rye Common is just moments away, providing the perfect spot for running or outdoor relaxation.

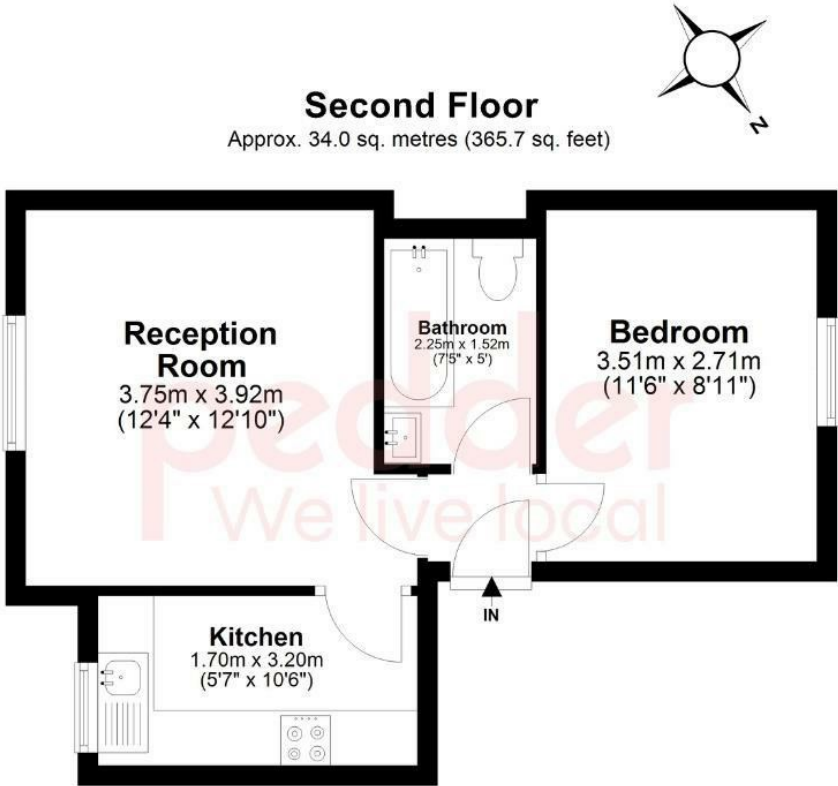
Local high streets including Peckham Rye, Nunhead Lane and Lordship Lane are all within easy reach, offering a fantastic selection of independent shops, cafés, bars and restaurants.

Please contact the Peckham office today to arrange a viewing.

EPC: C | Council Tax Band: B | Lease: 964 years remaining | SC: £0 pa | GR: £0 pa | BI: approx. £400 pa



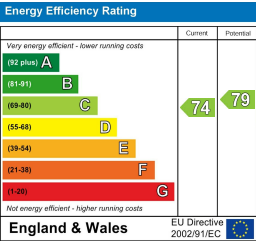
# Floorplan



Total area: approx. 34.0 sq. metres (365.7 sq. feet)

Copyright www.pedderproperty.com 2024. These plans are for representation purposes only as Defined by RICS - Code of Measuring Practice. Not drawn to scale. windows and door measurements are approximate. please check dimensions, shapes and compass bearings before making any decisions reliant upon them.

Plan produced using PlanUp.



Pedder Property Ltd trading as Pedder for themselves and for the vendor/landlord of this property whose agents they are, give notice that (1) these particulars do not constitute any part of an offer or contract, (2) all statements contained within these particulars are made without responsibility on the part of Pedder or the vendor/landlord, (3) whilst made in good faith, none of the statements contained within these particulars are to be relied upon as a statement of representation or fact, (4) any intending purchaser/tenant must satisfy him/herself by inspection or otherwise as to the correctness of each of the statements contained within these particulars, (5) the vendor/landlord does not make or give either Pedder or any person in their employment any authority to make or give representation or warranty whatsoever in relation to this property.