



Evan Cook Close, SE15 | £1,750 Per Calendar
Month

02087029666
peckham@pedderproperty.com

pedder
We live local

In General

- One double bedroom
- Open plan living
- Close to station
- Part furnished
- Available early July
- EPC: B

In Detail

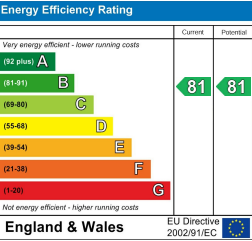
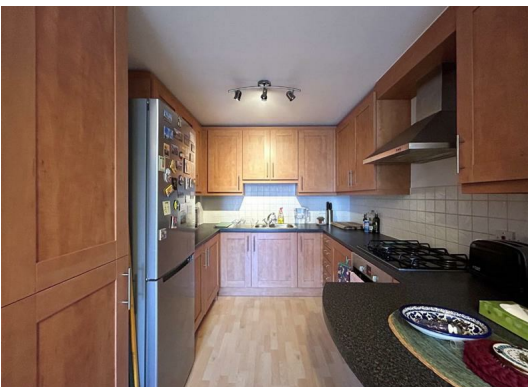
This beautifully presented first floor one bedroom flat offers an ideal location to various amenities and transport links.

The property features a characterful open plan living, dining and kitchen area that is bathed in natural light. The kitchen boasts ample storage space whilst the living area perfectly balances comfort and modernity. There is additionally a large double bedroom and well sized Jack and Jill bathroom.

Conveniently positioned within walking distance to Queens Road station, residents can enjoy quick access to London Bridge and The City. Additionally, the vibrant bars, cafes, and eateries of Peckham and New Cross are within easy reach making this property perfect for a young couple or single professional.

Please contact the Peckham Office today to arrange a viewing.

EPC: B | Council Tax Band: B | Part Furnished | Available early July | HD: £403.84 | SD: £2,019.23



Pedder Property Ltd trading as Pedder for themselves and for the vendor/landlord of this property whose agents they are, give notice that (1) these particulars do not constitute any part of an offer or contract, (2) all statements contained within these particulars are made without responsibility on the part of Pedder or the vendor/landlord, (3) whilst made in good faith, none of the statements contained within these particulars are to be relied upon as a statement of representation or fact, (4) any intending purchaser/tenant must satisfy him/herself by inspection or otherwise as to the correctness of each of the statements contained within these particulars, (5) the vendor/landlord does not make or give either Pedder or any person in their employment any authority to make or give representation or warranty whatsoever in relation to this property.