



Peckham Grove, SE15 | £430,000

02087029666

peckham@pedderproperty.com

pedder
We live local



In General

- Two double bedrooms
- One bathroom
- Chain free
- Balcony
- Gated allocated parking
- Warehouse conversion

In Detail

Set on the second floor of a striking warehouse conversion, this impressive two bedroom flat offers bright and characterful living in the heart of south east London. Positioned on a quiet, tree-lined street between Peckham and Camberwell, the property boasts high ceilings, exposed brickwork, and beautiful wooden floors throughout.

The open plan kitchen/living area is bathed in natural light from large south west facing windows and opens directly onto a private balcony. Both bedrooms are generous doubles, complemented by a sleek, contemporary family bathroom. A secure gated parking space is included – a rare find in such a central location.

Peckham Grove is ideally located just a stone's throw from Burgess Park and within walking distance to an excellent mix of cafés, shops and eateries in both Camberwell and Peckham. Local bus routes run frequently along Southampton Way, offering quick links north to Elephant & Castle and London Bridge, or south towards New Cross and Brixton. Nearby Peckham Rye and Denmark Hill stations provide swift Overground and national rail services across the city.

EPC: D | Council Tax Band: C | Lease: 960 years remaining | SC: £2,006.06 | GR: £250 pa | BI: £732.48

1

2

3

4

5

6

7

8

9

10

11

12

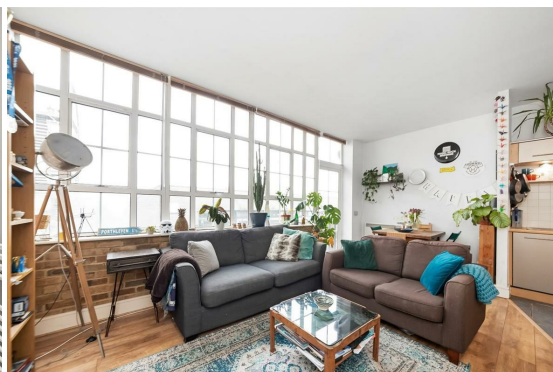
13

14

15

16

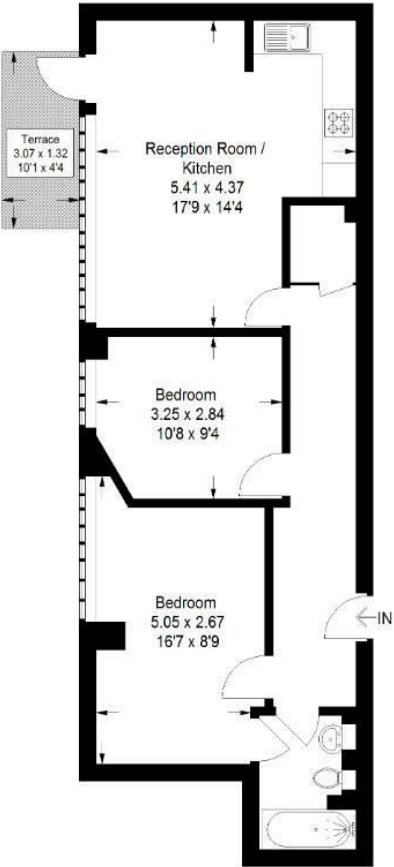
17



Floorplan

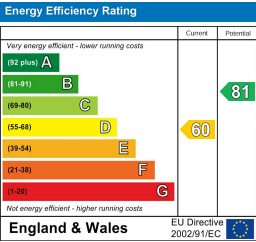
South City Court, SE15

Approximate Gross Internal Area
62.3 sq m / 671 sq ft



Second Floor

Copyright www.pedderproperty.com © 2025
These plans are for representation purposes only
as defined by RICS - Code of Measuring Practice.
Not drawn to Scale. Windows and door openings
are approximate. Please check all dimensions,
shapes and compass bearings before making any
decisions reliant upon them.



Pedder Property Ltd trading as Pedder for themselves and for the vendor/landlord of this property whose agents they are, give notice that (1) these particulars do not constitute any part of an offer or contract, (2) all statements contained within these particulars are made without responsibility on the part of Pedder or the vendor/landlord, (3) whilst made in good faith, none of the statements contained within these particulars are to be relied upon as a statement of representation or fact, (4) any intending purchaser/tenant must satisfy him/herself by inspection or otherwise as to the correctness of each of the statements contained within these particulars, (5) the vendor/landlord does not make or give either Pedder or any person in their employment any authority to make or give representation or warranty whatsoever in relation to this property.