

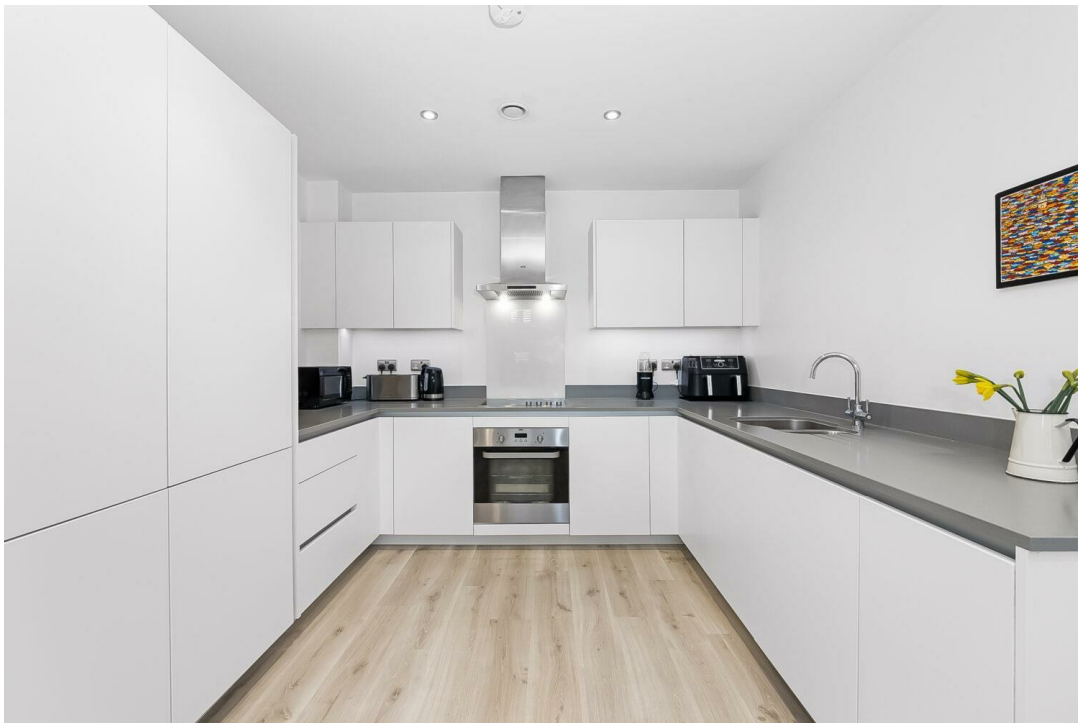


Queens Road, SE15 | £675,000

02087029666

peckham@pedderproperty.com

pedder
We live local



In General

- Three bedrooms
- Three bathrooms
- New build
- Split level
- Private front garden & rear terrace
- Over 1300 Sqft
- Fantastic location

In Detail

A rare to market three bedroom split level maisonette nestled within the sought-after Peckham Place development, offering contemporary design and exceptional living spaces.

Boasting over 1,300 sq. ft., this impressive property features its own front garden and private entrance. The ground floor showcases a stylish, high-spec kitchen diner with integrated appliances and ample space for entertaining, along with a generously sized cloakroom.

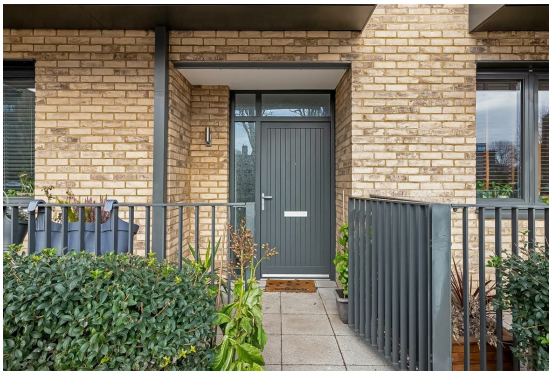
Upstairs, you'll find three double bedrooms, all bathed in natural light and two of which benefiting from built-in storage. The principal bedroom enjoys access to a large balcony, while another features a sleek en-suite bathroom. A beautifully finished family bathroom completes the layout. The spacious reception room, also located on this floor, opens onto a generous private terrace, perfect for alfresco dining, with further access to the beautifully landscaped communal gardens.

Immaculately maintained and well presented throughout, this home offers both luxury and practicality in equal measure.

Conveniently located a stones throw away from Queens Road station, you'll enjoy swift connections to London Bridge, Clapham Junction, and Shoreditch High Street. The area is brimming with trendy rooftop bars, artisan coffee shops, and vibrant eateries, all within a few minutes walk. Local amenities include the Peckham Pulse leisure centre, The Bussey Building and Peckham Plex cinema.

This property offers an unbeatable combination of space, style, and location—an opportunity not to be missed.

EPC: B | Council Tax Band: E | Lease: 119 years remaining | SC: £2,998.32 pa | GR: £250 pa | BI: Incl. in SC



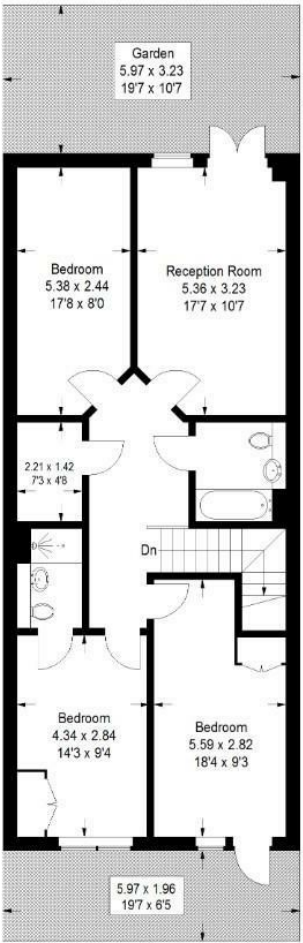
Floorplan

Leonard Court, SE15

Approximate Gross Internal Area
121.4 sq m / 1307 sq ft

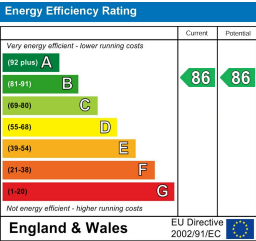


Ground Floor



First Floor

Copyright www.pedderproperty.com © 2025
These plans are for representation purposes only as defined by RICS - Code of Measuring Practice. Not drawn to Scale. Windows and door openings are approximate. Please check all dimensions, shapes and compass bearings before making any decisions reliant upon them.



Pedder Property Ltd trading as Pedder for themselves and for the vendor/landlord of this property whose agents they are, give notice that (1) these particulars do not constitute any part of an offer or contract, (2) all statements contained within these particulars are made without responsibility on the part of Pedder or the vendor/landlord, (3) whilst made in good faith, none of the statements contained within these particulars are to be relied upon as a statement of representation or fact, (4) any intending purchaser/tenant must satisfy him/herself by inspection or otherwise as to the correctness of each of the statements contained within these particulars, (5) the vendor/landlord does not make or give either Pedder or any person in their employment any authority to make or give representation or warranty whatsoever in relation to this property.