



Hanover Park, SE15 | £390,000

02087029666

[peckham@pedderproperty.com](mailto:peckham@pedderproperty.com)

**pedder**  
We live local





## In General

- Two bedrooms
- Victorian conversion
- 680 sqft
- Chain Free
- Exceptional location

## In Detail

A beautifully located two bedroom apartment in the heart of vibrant Peckham, set within a charming Victorian conversion on Hanover Park and offered to the market chain free.

This charming first floor flat, boasts 680 sq. ft. of well-designed living space. The property features a charming and bright living room with beautiful bay windows, a spacious separate kitchen/diner, two generous double bedrooms, and a well appointed bathroom, making it an excellent choice for first-time buyers or investors alike.

The location is exceptional, just a stone's throw from Peckham Rye Station, providing frequent services to London Bridge, London Victoria, and Overground links to Shoreditch High Street and Whitechapel. You'll be spoilt for choice with the eclectic mix of trendy shops and eateries of Rye Lane and Bellenden Road, cultural landmarks such as Peckham Levels, Peckham Plex cinema, and The Bussey Building, as well as the beautiful open spaces of Peckham Rye Park & Common.

With superb transport links and a lively neighbourhood at your fingertips, this home offers an ideal combination of convenience, style, and character.

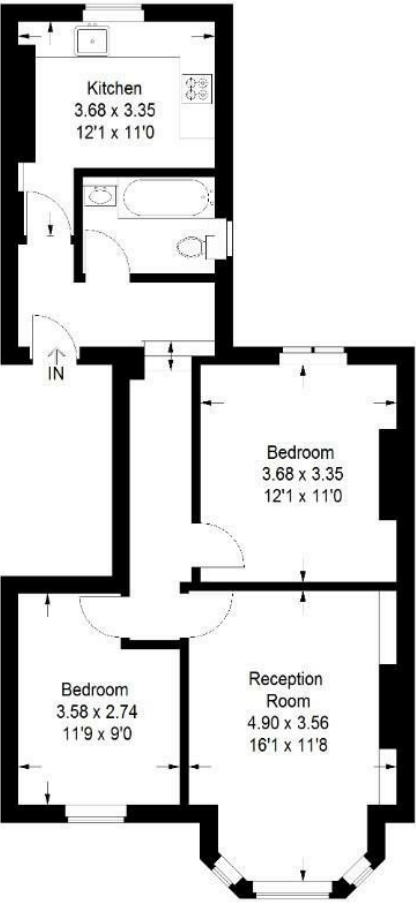
EPC: D | Council Tax Band: B | Lease: 151 years remaining | SC: £2,400 pa | GR: N/A | BI: £890



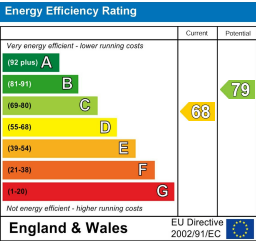
# Floorplan

## Hanover Park, SE15

Approximate Gross Internal Area  
63.2 sq m / 680 sq ft



Copyright [www.pedderproperty.com](http://www.pedderproperty.com) © 2025  
These plans are for representation purposes only as defined by RICS - Code of Measuring Practice. Not drawn to Scale. Windows and door openings are approximate. Please check all dimensions, shapes and compass bearings before making any decisions reliant upon them.



Pedder Property Ltd trading as Pedder for themselves and for the vendor/landlord of this property whose agents they are, give notice that (1) these particulars do not constitute any part of an offer or contract, (2) all statements contained within these particulars are made without responsibility on the part of Pedder or the vendor/landlord, (3) whilst made in good faith, none of the statements contained within these particulars are to be relied upon as a statement of representation or fact, (4) any intending purchaser/tenant must satisfy him/herself by inspection or otherwise as to the correctness of each of the statements contained within these particulars, (5) the vendor/landlord does not make or give either Pedder or any person in their employment any authority to make or give representation or warranty whatsoever in relation to this property.