



Kimberley Avenue, SE15  
£350,000

0208 702 9666  
[pedderproperty.com](http://pedderproperty.com)

**pedder**



# In general

- One bedroom
- Private patio garden
- Chain Free
- Split level

# In detail

Welcome to this charming one-bedroom split level maisonette, ideally located in the vibrant heart of Nunhead. Featuring its own entrance and a private patio garden, this property is offered chain free and ready for immediate move in.

Spanning over 700 sq ft of internal space, this delightful home boasts a sizable kitchen on the ground floor and a spacious living room on the first floor, bathed in natural light. Additionally, the first floor comprises a double bedroom, a functional bathroom, and ample storage throughout, ensuring a comfortable and convenient living experience. Enjoy the added convenience of inclusive heating, hot water, and building insurance covered by the service charge.

The maisonette's excellent location is a standout feature, with Nunhead station just across the road, offering seamless connectivity to the city with direct trains to London Victoria and Blackfriars. The area is rich in green spaces and parks, such as Peckham Rye and Nunhead Cemetery, all within walking distance. Nearby, Nunhead village, offers a fantastic selection of independent bars, cafes, and bistros as well as two excellent community pubs nearby.

EPC: D | Council Tax Band: B | Lease: 104 years remaining | SC: £2,993 pa | GR: £10 pa | Buildings Insurance: Included in SC

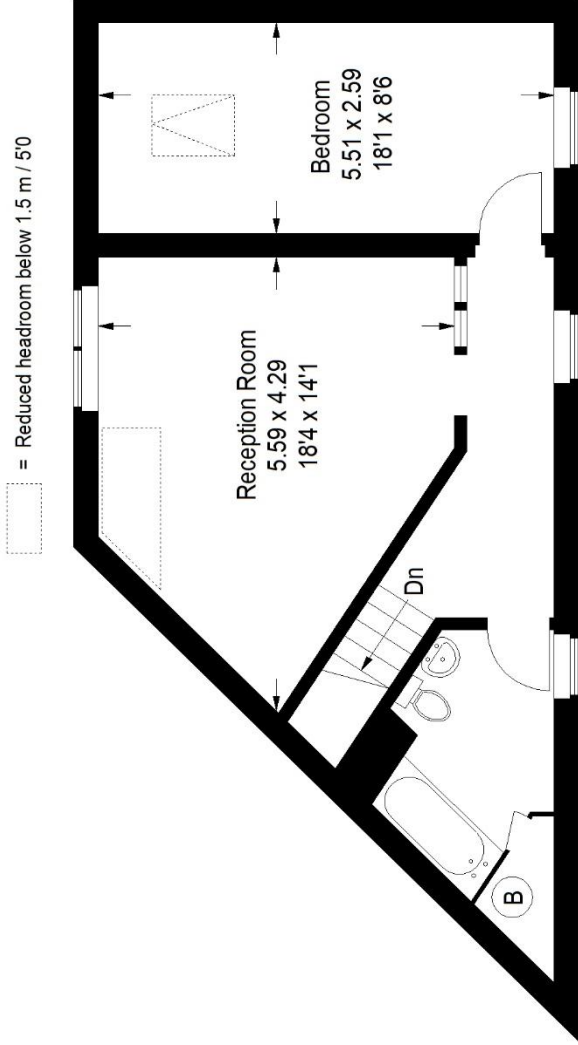


# Floorplan

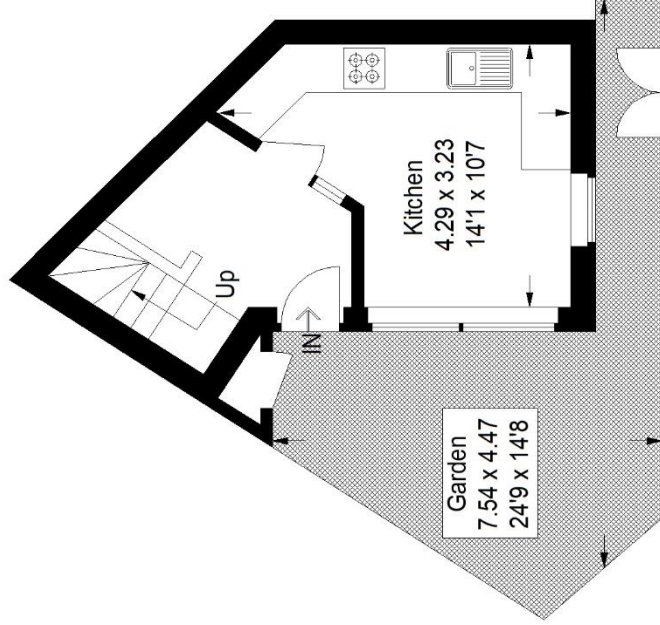
## Kimberley Avenue, SE15

Approximate Gross Internal Area

67.3 sq m / 724 sq ft



First Floor



Ground Floor

Copyright www.pedderproperty.com © 2024

These plans are for representation purposes only as defined by RICS - Code of Measuring Practice. Not drawn to Scale. Windows and door openings are approximate. Please check all dimensions, shapes and compass bearings before making any decisions reliant upon them.



Pedder Property Ltd trading as Pedder for themselves and for the vendor/landlord of this property whose agents they are, give notice that (1) these particulars do not constitute any part of an offer or contract, (2) all statements contained within these particulars are made without responsibility on the part of Pedder or the vendor/landlord, (3) whilst made in good faith, none of the statements contained within these particulars are to be relied upon as a statement of representation or fact, (4) any intending purchaser/tenant must satisfy him/herself by inspection or otherwise as to the correctness of each of the statements contained within these particulars, (5) the vendor/landlord does not make or give either Pedder or any person in their employment any authority to make or give representation or warranty whatsoever in relation to this property.