



Mile Oak Road,



Guide Price
£525,000
Freehold

- PLOT 7--RESERVED
- BRAND NEW BUILD
- THREE BEDROOMS
- TWO BATHROOMS
- OFF STREET PARKING

PLOT 7 HAS BEEN RESERVED

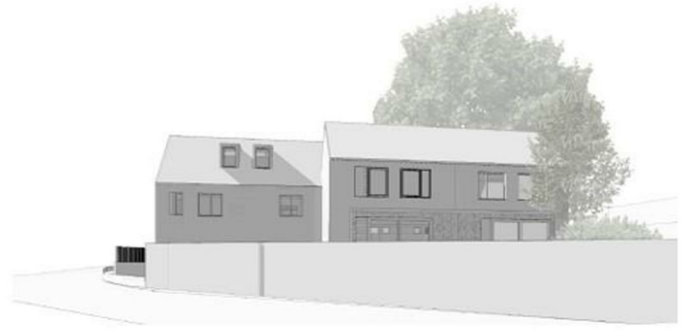
Robert Luff & Co are pleased to bring to market this brand new three-bedroom, two-bathroom semi-detached house nestled in the charming neighbourhood of Portslade. With a thoughtfully designed driveway ensuring ease and accessibility. The property's advantageous location places it in close proximity to local schools, making it an ideal choice for families seeking quality education options. Additionally, nature enthusiasts will appreciate the nearby South Downs. Embracing a warm and welcoming atmosphere, this house boasts three bedrooms, two bathrooms and spacious living areas providing ample space.

T: 01273 921133 E:
www.robertluff.co.uk

**Robert
Luff & Co**
Sales | Lettings | Commercial



Proposed Perspective View towards New Site Entrance



Proposed Perspective View from the East

Accommodation

Floorplan



UNITS 6 & 7
2 x 3 BED OVER 2 FLOORS

Energy Efficiency Rating		Current	Potential
Very energy efficient - lower running costs			
(92 plus) A			
(81-91) B			
(69-80) C			
(55-68) D			
(39-54) E			
(21-38) F			
(1-20) G			
Not energy efficient - higher running costs			
England & Wales		EU Directive 2002/91/EC	

Environmental Impact (CO ₂) Rating		Current	Potential
Very environmentally friendly - lower CO ₂ emissions			
(92 plus) A			
(81-91) B			
(69-80) C			
(55-68) D			
(39-54) E			
(21-38) F			
(1-20) G			
Not environmentally friendly - higher CO ₂ emissions			
England & Wales		EU Directive 2002/91/EC	

The information provided about this property does not constitute or form any part of an offer or contract, nor may it be regarded as representations. All interested parties must verify accuracy and your solicitor must verify tenure/lease information, fixtures and fittings and, where the property has been extended/converted, planning/building regulation consents. All dimensions are approximate and quoted for guidance only as are floor plans which are not to scale and their accuracy cannot be confirmed. References to appliances and/or services does not imply that they are necessarily in working order or fit for the purpose.

28 Blatchington Road, Hove, East Sussex, BN3 3YU

T: 01273 921133 E:

www.robترلuff.co.uk