



Pitdown Road, Brighton



Price
£450,000
Freehold

- SPACIOUS LINK DETACHED FOUR BEDROOM FAMILY HOME
- DUAL ASPECT LOUNGE/DINER
- NO CHAIN-MODERNISED & READY TO MOVE IN
- BATHROOM AND SHOWER ROOM
- EASY ACCESS TO THE BEACH, KEMPTOWN & BRIGHTON MARINA
- RARE WRAP AROUND PRIVATE PLOT
- LOFT ACCESS

This exceptional, spacious and private 4 bedroom house with delightful wrap around gardens is set back from the road, next to a quiet leafy cul-de-sac with easy no permit parking. The property has been modernised substantially, including the fitting of a stylish kitchen, an upstairs bathroom and downstairs shower room.

The spacious and light dual aspect lounge/diner has windows looking out onto sunny south/east and south/west facing gardens. The sleek dove grey fully tiled kitchen includes a 5 ring gas hob, electric oven, large integrated tower fridge, dishwasher and Vaillant boiler. There is a convenient downstairs shower room plus an office area ideal for studying or home workers. All four bedrooms are upstairs along with the modern family bathroom with bath and over shower.

The attractive gardens, offering various spaces to relax or entertain, wrap around the whole of the ground floor and are enclosed by secure fencing with lockable gates ideal for cycle access and storage. An 8 x 4 garden shed was recently erected in the main garden. There are lovely views towards Brighton racecourse grandstand from the kitchen, master bedroom and main garden. There are slight sea views from one of the bedrooms, landing and garden.

**Robert
Luff & Co**
Sales | Lettings | Commercial

T: 01273 921133 E:
www.robertluff.co.uk



Accommodation

Entrance Hall

Living Room/Diner 22'6" x 11'10" (6.88 x 3.62)

Kitchen 10'73 x 8'25 (3.05m x 2.44m)

Shower Room

Bedroom One 14'8" x 8'3" (4.49 x 2.54)

Bedroom Two 14'4" x 7'7" (4.39 x 2.32)

Bedroom Three 9'10" x 8'9" (3.01 x 2.69)

Bedroom Four 11'8" x 5'11" (3.57 x 1.81)

Bathroom

Garden

Agents Notes

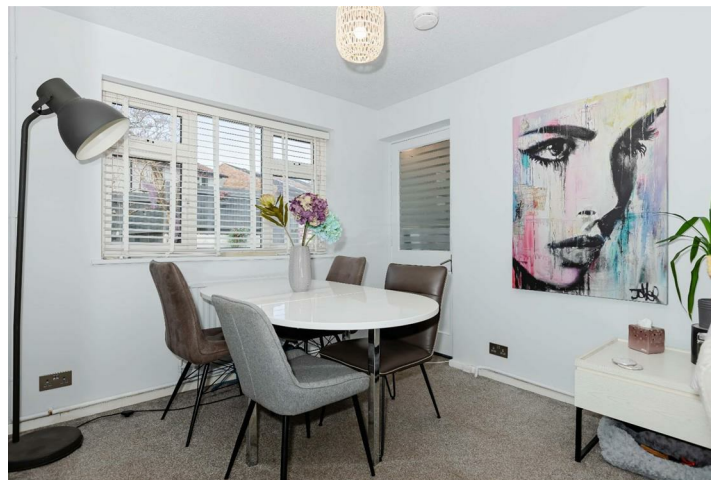
Council Tax Band: C

EPC Rating: C

28 Blatchington Road, Hove, East Sussex, BN3 3YN

T: 01273 921133 E:

www.robertluff.co.uk



28 Blatchington Road, Hove, East Sussex, BN3 3YN
T: 01273 921133 E:
www.robertluff.co.uk



28 Blatchington Road, Hove, East Sussex, BN3 3YN
T: 01273 921133 E:
www.robertluff.co.uk



Total area: approx. 104.1 sq. metres (1120.8 sq. feet)

Energy Efficiency Rating		Environmental Impact (CO ₂) Rating			
	Current	Potential		Current	Potential
Very energy efficient - lower running costs				Very environmentally friendly - lower CO2 emissions	
(92 plus) A				(92 plus) A	
(81-91) B				(81-91) B	
(69-80) C				(69-80) C	
(55-68) D				(55-68) D	
(39-54) E				(39-54) E	
(21-38) F				(21-38) F	
(1-20) G				(1-20) G	
Not energy efficient - higher running costs				Not environmentally friendly - higher CO2 emissions	
England & Wales		EU Directive 2002/91/EC		England & Wales	

The information provided about this property does not constitute or form any part of an offer or contract, nor may it be regarded as representations. All interested parties must verify accuracy and your solicitor must verify tenure/lease information, fixtures and fittings and, where the property has been extended/converted, planning/building regulation consents. All dimensions are approximate and quoted for guidance only as are floor plans which are not to scale and their accuracy cannot be confirmed. References to appliances and/or services does not imply that they are necessarily in working order or fit for the purpose.