

The Ternary, Old Haymarket, Liverpool

Commercial space available:

The Ternary,
Old Haymarket,
Liverpool,
L1 6ER

All enquiries:

0333 666 0000

space@urbansplash.co.uk

urbansplash.co.uk/barton-business-park

- 9,881 sq ft overall
- Basement — 4585 sq ft
- Ground — 2648 sq ft
- 1st floor — 2648 sq ft
- Fully self-contained unit
- Currently permitted for D1 use
- Subject to change of use it would make a fantastic office space or gym
- £65,000 per annum (£5,417 pcm) to let and £1,200,000 to buy
- Excellent city centre location, just minutes from Liverpool Lime Street Station, Liverpool One and the Mersey Tunnel
- EPC available upon request



Hitchcock Wright
CHARTERED SURVEYORS & PARTNERS
0151 227 3400
www.hitchcockwright.co.uk

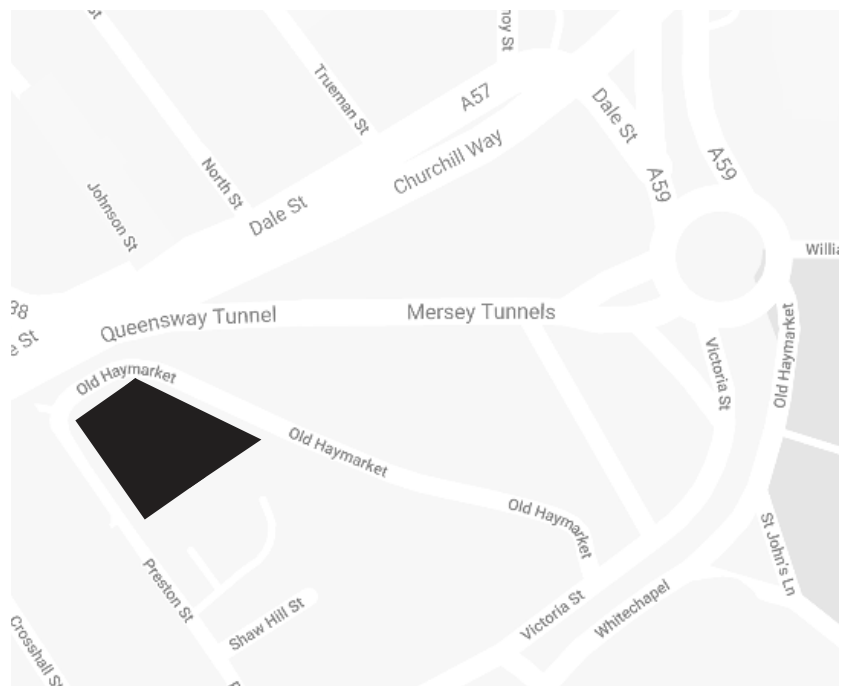
**keppie
massie**
0151 255 0755
www.keppiemassie.com

The Ternary, Old Haymarket, Liverpool



Location

- 5 minute walk to Liverpool One
- 5 minute walk to Lime Street Station
- 15 minute walk to Albert Dock and Liver Building



All enquiries:

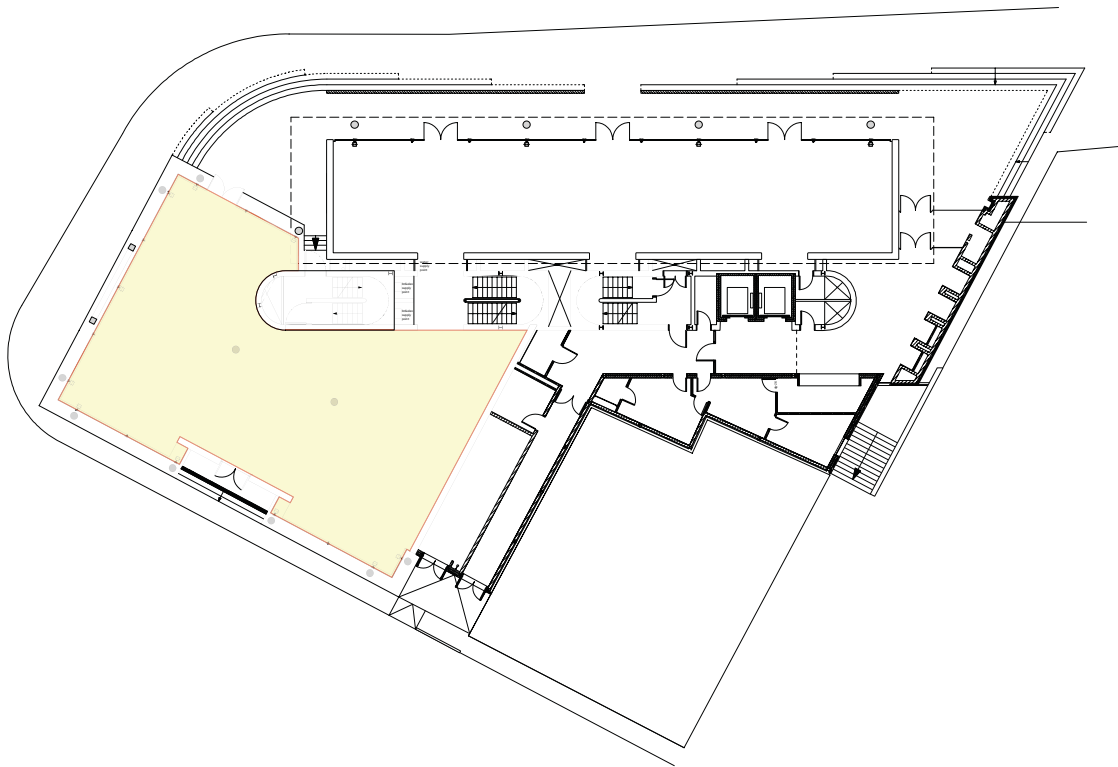
0333 666 0000

space@urbansplash.co.uk

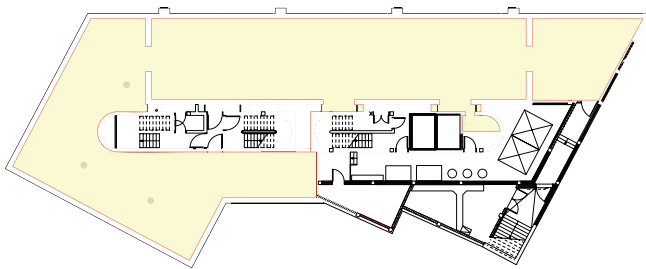
urbansplash.co.uk/old-haymarket/the-ternary

The Ternary, Old Haymarket, Liverpool

Ground floor — 2648 sq ft



Basement — 4585 sq ft



First floor — 2648 sq ft

