



Whiting Way, London, SE16 7EN

Beautifully presented and naturally bright, this one-bedroom apartment is located within the highly sought-after Royal Victoria development. Featuring central heating throughout, the property offers a spacious reception area that opens onto a private balcony, a sleek contemporary kitchen fully equipped with modern appliances, a stylish bathroom, and a generously sized bedroom with built-in wardrobes.

Additional storage is conveniently located in the hallway, enhancing the apartment's practicality. Residents benefit from access to a state-of-the-art fitness centre and a 24-hour concierge service. Onsite amenities include two grocery stores, as well as a vibrant selection of independent boutiques and cafés right on your doorstep.

- Generous One Bedroom Apartment
- Modern Sought After Development
- Modern Kitchen
- Stylish Bathroom
- Plenty Of Storage Space
- 24hr Concierge and Access to GYM

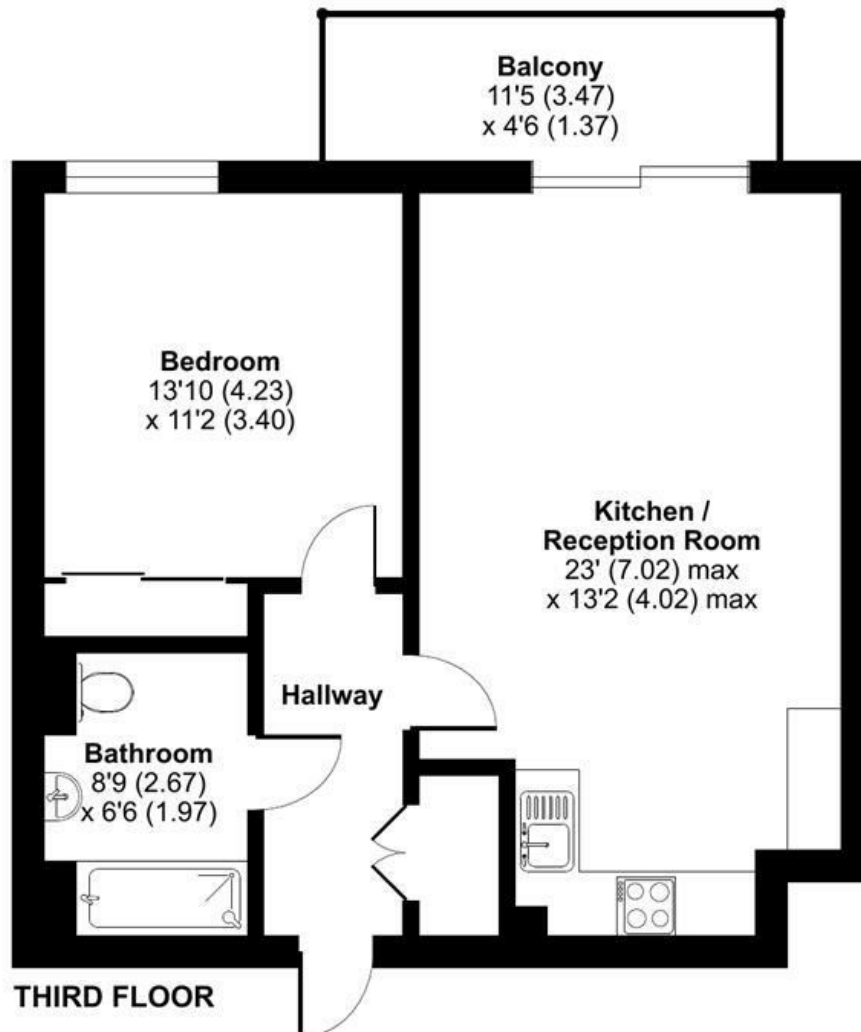
Alex & Matteo
ESTATE AGENTS

£1,950 Per month

Whiting Way, London, SE16

Approximate Area = 568 sq ft / 52.7 sq m

For identification only - Not to scale



Alex & Matteo
ESTATE AGENTS



Floor plan produced in accordance with RICS Property Measurement 2nd Edition, Incorporating International Property Measurement Standards (IPMS2 Residential). © nichecom 2025. Produced for Alex & Matteo Estate Agents. REF: 1293955

Energy Efficiency Rating		
	Current	Potential
Very energy efficient - lower running costs		
(92 plus) A		
(81-91) B	86	86
(69-80) C		
(55-68) D		
(39-54) E		
(21-38) F		
(1-20) G		
Not energy efficient - higher running costs		
England & Wales		
	EU Directive 2002/91/EC	