



Adams Gardens Estate, London, SE16 4JH

Immaculately presented and recently refurbished two double bedroom maisonette located in picturesque and tranquil Rotherhithe Village.

The property boasts a naturally bright living room, a stylish fully equipped Kitchen downstairs. Upstairs are the two generous double bedrooms and the stylish bathroom. Rotherhithe overground station is just round the corner and Canada Water / Bermondsey Jubilee line stations are within easy reach. A plethora of local restaurants, cafes and pubs are nearby.

- Two Bedroom Maisonette
- Recently Refurbished
- Contemporary Kitchen
- Stylish Bathroom
- Naturally Bright
- Picturesque Rotherhithe Village

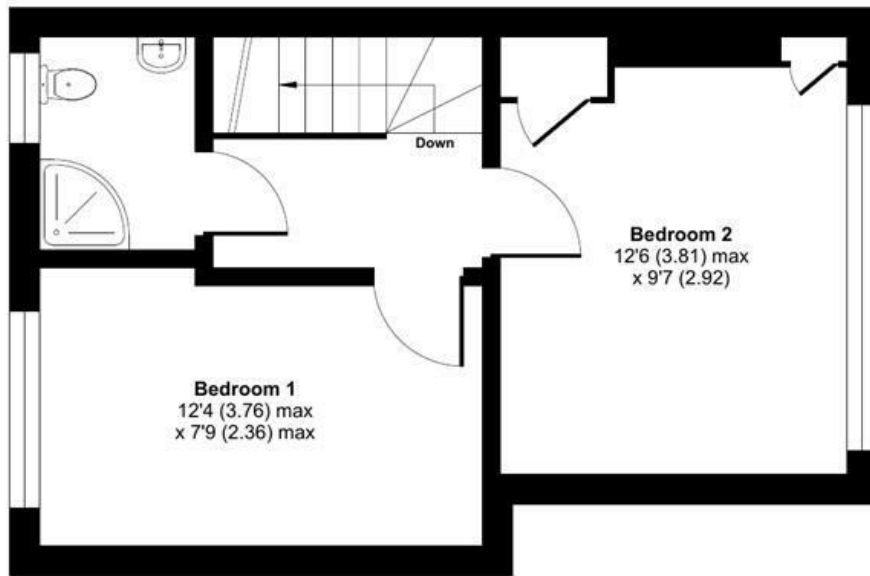
Alex & Matteo
ESTATE AGENTS

£1,950 Per month

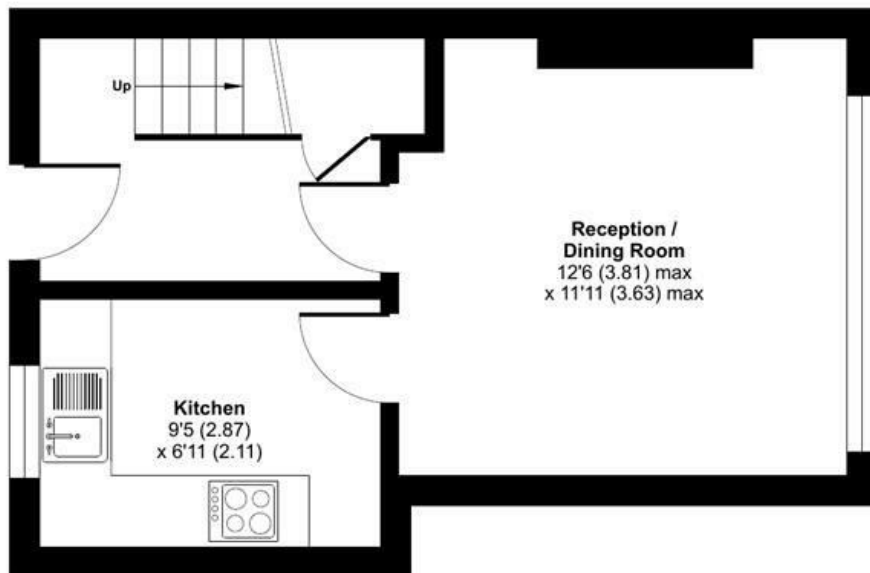
Adams Gardens Estate, London, SE16

Approximate Area = 591 sq ft / 54.9 sq m

For identification only - Not to scale



THIRD FLOOR



SECOND FLOOR

Alex & Matteo
ESTATE AGENTS



**Certified
Property
Measurer**

Floor plan produced in accordance with RICS Property Measurement Standards incorporating International Property Measurement Standards (IPMS2 Residential). © nitchcom 2023. Produced for Alex & Matteo Estate Agents. REF: 974707

