



1 Concorde Way, London, SE16 2PY

A generous and well-kept two bedroom garden apartment in Surrey Quays. The property boasts a naturally bright living room leading into the impressive landscaped private garden, a modern kitchen, two spacious double bedrooms, and a good sized family bathroom. The apartment benefits from a great amount of storage space and is conveniently located moments from Surrey Quays, Canada Water and South Bermondsey stations for a quick commute to the City & Canary Wharf, and a plethora of local amenities.

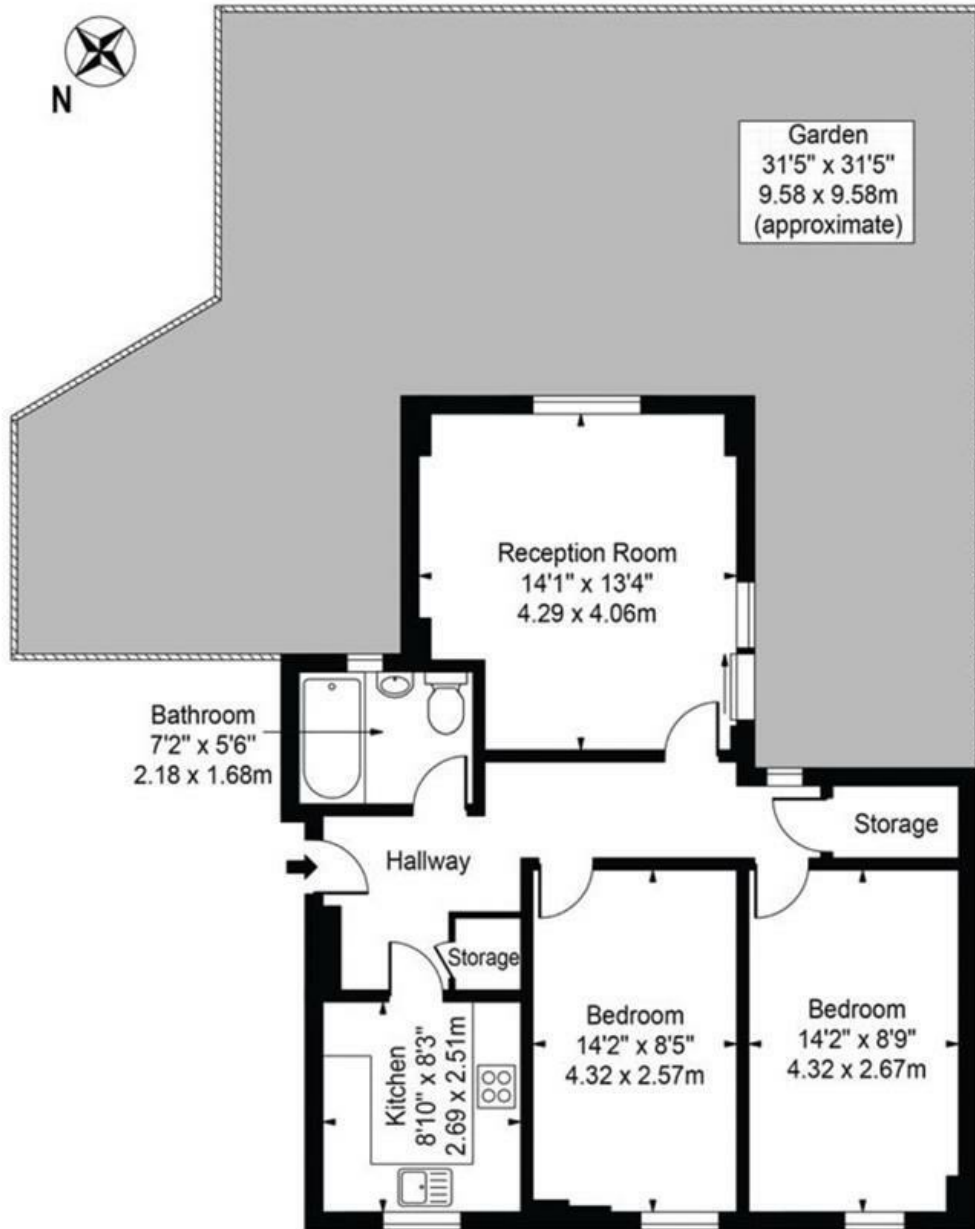
- Impressive Garden Apartment
- Spacious and Naturally Bright Living Room
- Two Double Bedrooms
- Ample Storage Space
- Close To Transport Links

Alex & Matteo
ESTATE AGENTS

£2,000 Per month

Concorde Way

Approx. Gross Internal Area 697 Sq Ft - 64.75 Sq M



Ground Floor

For Illustration Purposes Only - Not To Scale

This floor plan should be used as a general outline for guidance only and does not constitute in whole or in part an offer or contract. Any intending purchaser or lessee should satisfy themselves by inspection, searches, enquiries and full survey as to the correctness of each statement. Any areas, measurements or distances quoted are approximate and should not be used to value a property or be the basis of any sale or let.

Energy Efficiency Rating		
	Current	Potential
Very energy efficient - lower running costs		
(92 plus) A		
(81-91) B		
(69-80) C	76	80
(55-68) D		
(39-54) E		
(21-38) F		
(1-20) G		
Not energy efficient - higher running costs		
England & Wales EU Directive 2002/91/EC		