

6 Webster Road, London, SE16 4DS

A cosy and well-kept one bedroom apartment in the heart of Bermondsey. The first-floor property is fully furnished. It features a modern kitchen, open plan living space, and a double bedroom. The bathroom has recently refurbished flooring and also contains a walk-in shower. This quaint apartment is only a walk away from local amenities such as the Bermondsey underground station, gym, grocery shops, restaurants and Southwark Park.

- Fully furnished
- Good transport links
- Great location
- Close to local shops
- Refurbished tile flooring
- Extremely well kept

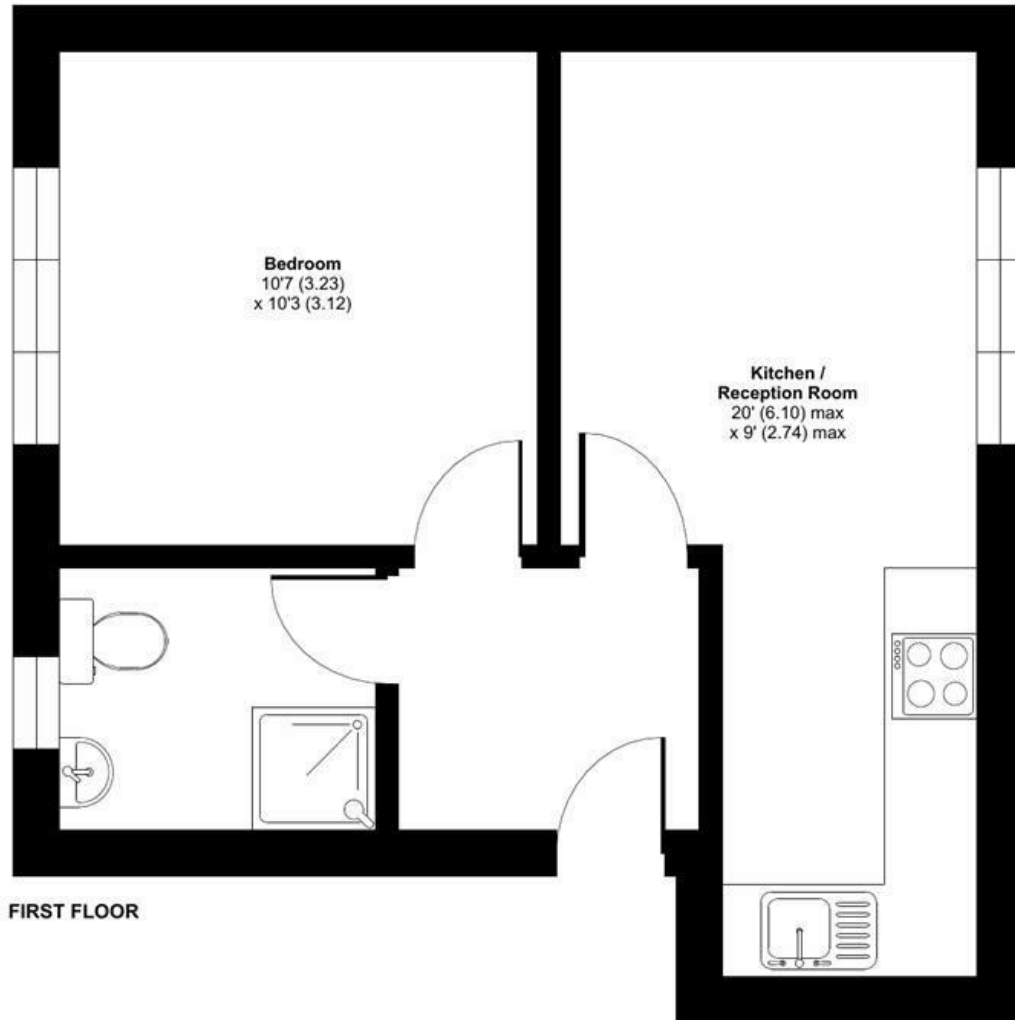
Alex & Matteo
ESTATE AGENTS

£1,550 Per month

Webster Road, London, SE16

Approximate Area = 351 sq ft / 32.6 sq m

For identification only - Not to scale



FIRST FLOOR

Alex & Matteo
ESTATE AGENTS



**Certified
Property
Measurer**

Floor plan produced in accordance with RICS Property Measurement Standards incorporating International Property Measurement Standards (IPMS2 Residential). © nitchcom 2023. Produced for Alex & Matteo Estate Agents. REF: 1080030

Energy Efficiency Rating		
	Current	Potential
Very energy efficient - lower running costs		
(92 plus) A		
(81-91) B		
(69-80) C	72	76
(55-68) D		
(39-54) E		
(21-38) F		
(1-20) G		
Not energy efficient - higher running costs		
England & Wales		
	EU Directive 2002/91/EC	