



## 5 Sheppard Drive, London, SE16 3EJ

A modern two bedroom apartment located in a tranquil residential Bermondsey cul-de-sac.

The apartment boasts a generous reception room, modern kitchen with plenty of storage, a master bedroom with built in storage, second bedroom currently being used as a home office, and a stylish family bathroom. Additional storage can be found in the hallway

South Bermondsey Station for a 5 minute commute to London Bridge is just round the corner as well as a plethora of local amenities. The development is on a cycle quietway.

Council Tax Band C

- Spacious Two Bedroom Apartment
- Good Transport Links
- Residential Location
- Naturally Bright
- Furnished Property
- Parking Space included

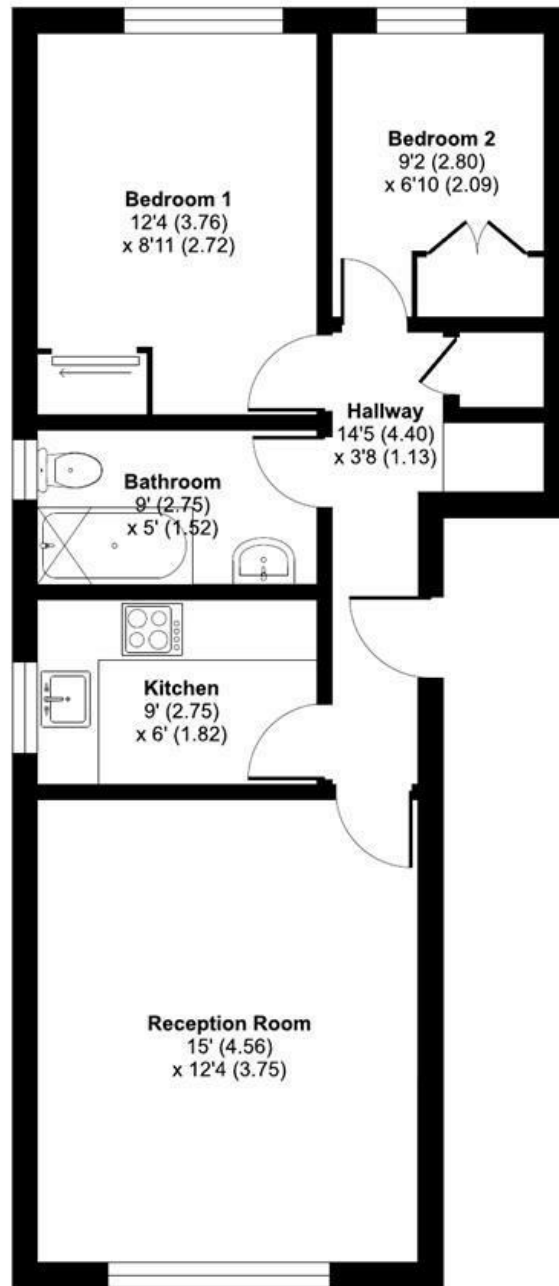
**Alex & Matteo**  
ESTATE AGENTS

**£1,950 Per month**

# Sheppard Drive, London, SE16

Approximate Area = 549 sq ft / 51 sq m

For identification only - Not to scale



GROUND FLOOR

**Alex & Matteo**  
ESTATE AGENTS



Floor plan produced in accordance with RICS Property Measurement 2nd Edition, Incorporating International Property Measurement Standards (IPMS2 Residential). © nichecom 2025. Produced for Alex & Matteo Estate Agents. REF: 1279616

Energy Efficiency Rating		
	Current	Potential
Very energy efficient - lower running costs		
(92 plus) <b>A</b>		
(81-91) <b>B</b>		
(69-80) <b>C</b>	70	76
(55-68) <b>D</b>		
(39-54) <b>E</b>		
(21-38) <b>F</b>		
(1-20) <b>G</b>		
Not energy efficient - higher running costs		
England & Wales		
EU Directive 2002/91/EC		