

Swan Mead, London, SE1 4SU

Guide Price £400,000 to £425,000

A spacious second (top) floor two-bedroom duplex apartment located moments from popular Bermondsey Street and a plethora of local amenities.

The lower floor features a large living room with extensive natural light and built-in storage, adjoining a well-kept separate kitchen. The upper floor boasts two spacious double bedrooms, one with built-in storage, and a family bathroom.

The surrounding area has many local features such as independent bars, gastropubs, cafes, award winning restaurants, supermarkets, as well as yoga studios and gyms. Iconic Borough Market is within walking distance and The City is accessible by walking over Tower Bridge.

The apartment is easy walking distance from Borough (12 minutes), London Bridge (14 minutes) and Elephant and Castle (18 minutes), providing access to the Northern, Jubilee and Bakerloo underground lines, plus overground trains. Popular cycling routes are adjacent, providing access to Waterloo in 15 minutes and Westminster in 20 minutes, as well as a wide selection of buses.

Years on Lease - 101

Annual Service Charge - £2619.26

Annual Ground Rent - £10

- Spacious Two Bedroom Maisonette Apartment
- Naturally Bright
- Excellent Location
- Moments from Bermondsey Street
- Surrounded by Local Amenities
- Plenty of Storage
- Resident's Car Parking Permit available
- Enjoying Pleasant City Views

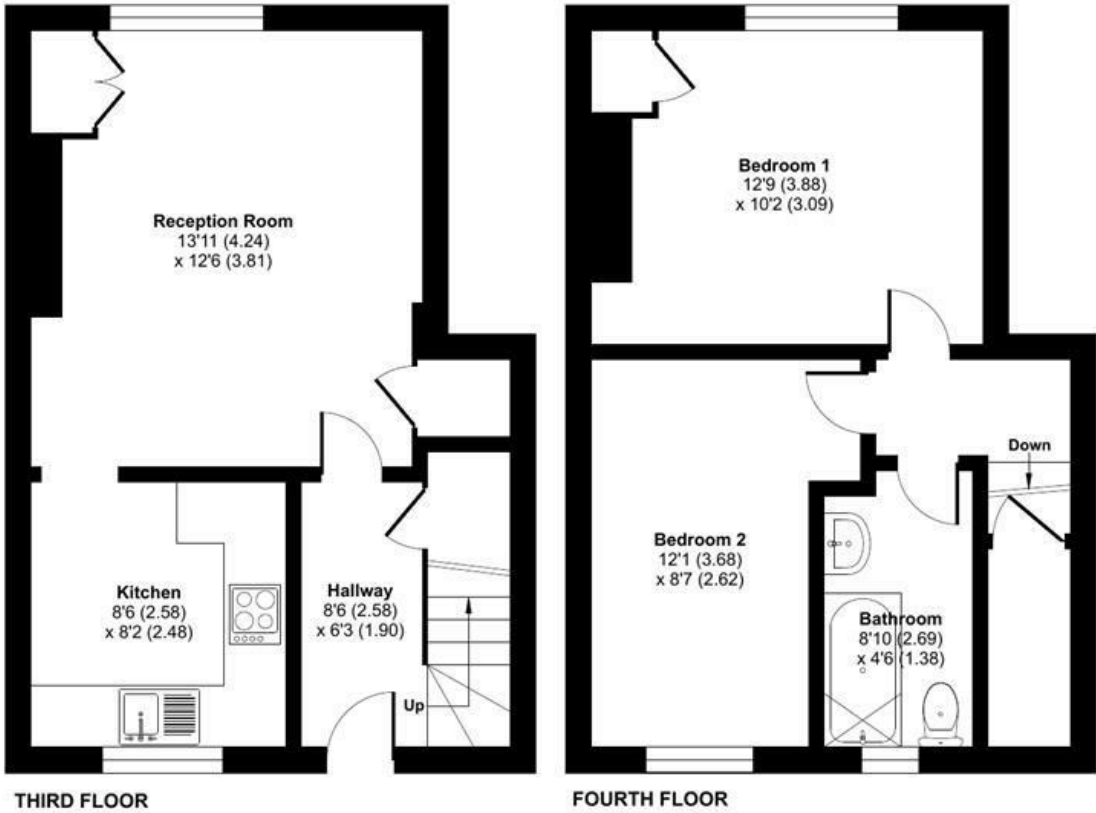
Alex & Matteo
ESTATE AGENTS

Guide price £400,000

Swan Mead, London, SE1

Approximate Area = 642 sq ft / 59.6 sq m

For identification only - Not to scale



Alex & Matteo
ESTATE AGENTS



Floor plan produced in accordance with RICS Property Measurement 2nd Edition, Incorporating International Property Measurement Standards (IPMS2 Residential). © nitchcom 2025. Produced for Alex & Matteo Estate Agents. REF: 1268821

