

## Rotherhithe Street, London, SE16 5XX

Guide Price £425,000 to £450,000. A spacious riverside one bedroom, fourth floor apartment with private balcony enjoying stunning Thames and city skyline views located in prestigious Globe Wharf development in Rotherhithe.

The apartment features a very well kept kitchen with plenty of storage space, a generous reception and dining room with access to a private balcony enjoying direct river and city skyline views, a double bedroom with built-in storage, and a stylish bathroom. Additional storage can be found in the hallway.

Onsite benefits include allocated secure underground parking space, bike parking, 24 hrs concierge, gym, as well as access to a heated swimming pool.

Globe Wharf, a Grade II Listed Victorian warehouse conversion, balances the charm and character of its exposed brickwork, cast-iron columns, and open walkways with modern living.

Rotherhithe and Canada Water stations for the overground and Jubilee lines are within easy reach.

Share of Freehold

Years Left on Lease - 999 - Newly Extended

Council Tax Band - E

Service charge: £4102 per annum

Sinking Funds Contributions: £1144 per annum

Council tax and, where applicable, lease information, service charges, ground rent, property size, are given as a guide only and should always be checked and confirmed by your Solicitor prior to exchange of contracts.

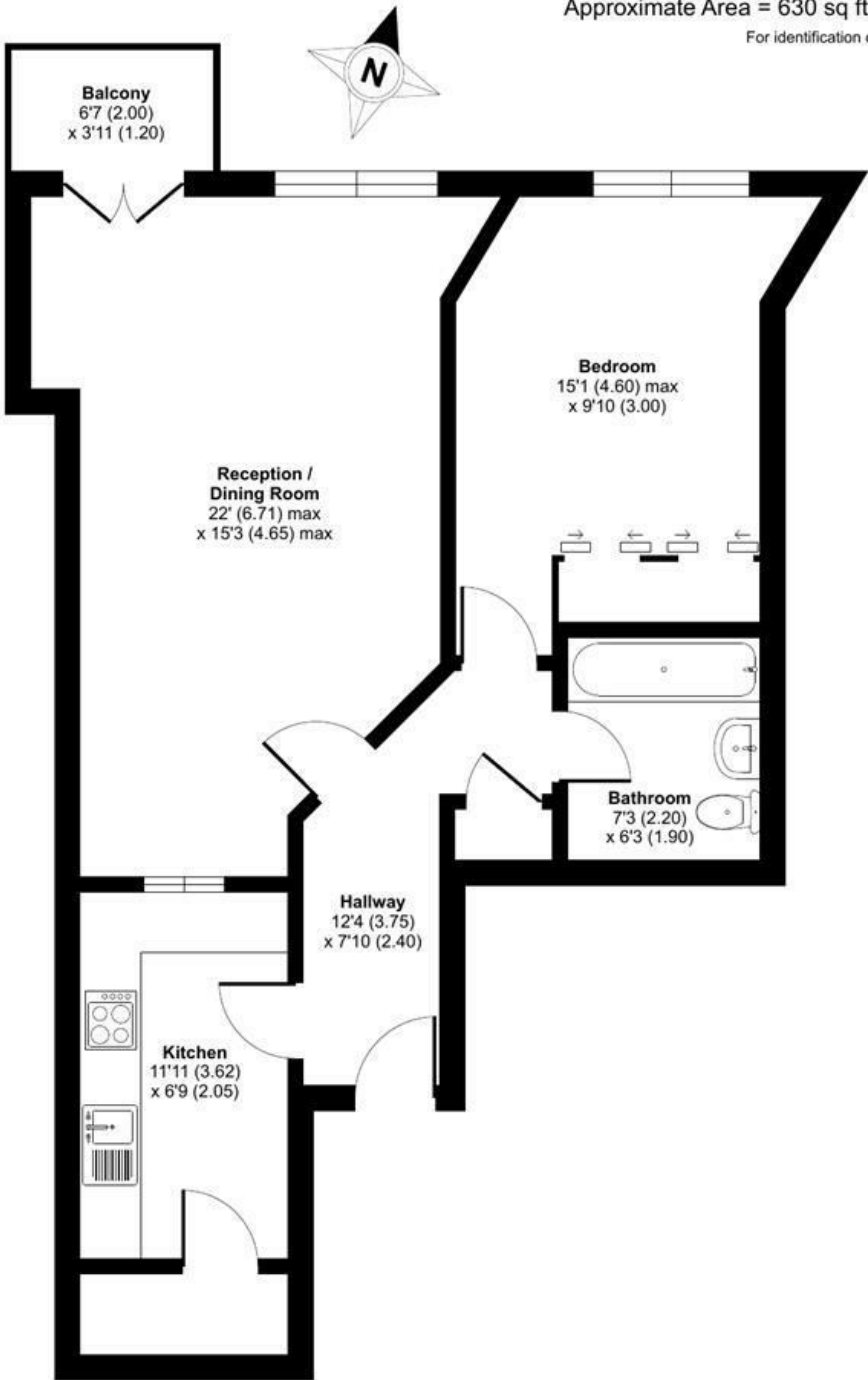
- Direct River Thames - 4th Floor
- Direct River Views from Living Room and Bedroom
- Chain Free - Share of Freehold
- Newly Extended Lease (999 years)
- Private Balcony Enjoying Direct River and City Skyline Views
- Underground Gated Car Parking
- Plenty of Storage Space
- 24 Hour Concierge and Access to Gym and Swimming pool
- Exposed Brickwork and Cast-Iron Column - Grade II Listed Building

**Alex & Matteo**  
ESTATE AGENTS

**Guide price £425,000**

Rotherhithe Street, London, SE16

Approximate Area = 630 sq ft / 58.5 sq m  
For identification only - Not to scale



Alex & Matteo  
ESTATE AGENTS



Certified  
Property  
Measurer

Floor plan produced in accordance with RICS Property Measurement Standards incorporating International Property Measurement Standards (IPMS2 Residential). © nitchcom 2024. Produced for Alex & Matteo Estate Agents. REF: 1201108

