



Pardoner Street, London, SE1 4DW

An impressive four double bedroom top floor maisonette in Borough, moments from the underground station and ever so popular Bermondsey Street.

Spread over two floors, the property boasts a naturally bright living room, a separate kitchen with plenty of space to dine, the first of the two bathrooms, and a spacious double bedroom downstairs. Upstairs are three generous double bedrooms with large amount of storage space and another modern bathroom.

Service Charge: £1766.65

Ground rent: £10.00

Years on the Lease: 107

Council Tax Band: C

- Top Floor Maisonette
- Four Double Bedrooms
- Generous and Naturally Bright
- Short Stroll From Bermondsey Street and Borough Station
- Spread Over Two Floors
- Low Service Charge

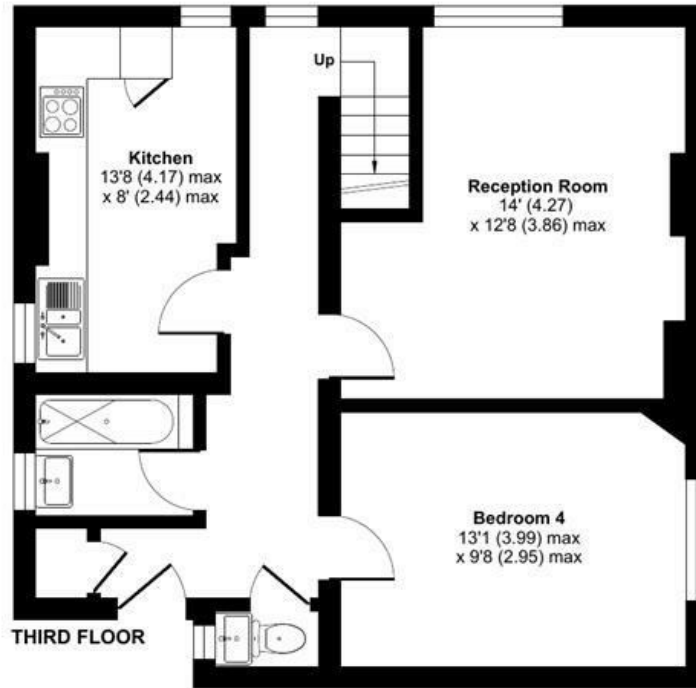
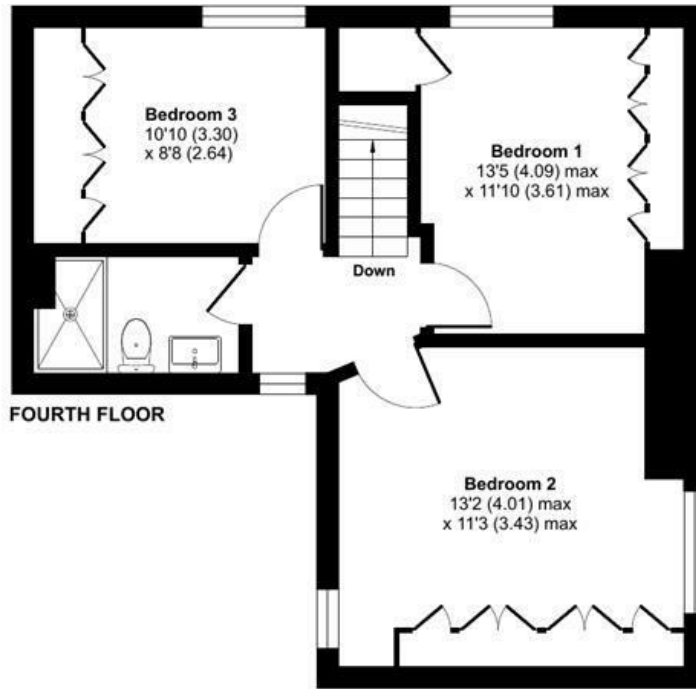
Alex & Matteo
ESTATE AGENTS

Offers in excess of £650,000

Geoffrey House, Pardoner Street, London, SE1

Approximate Area = 1086 sq ft / 100.8 sq m

For identification only - Not to scale



Alex & Matteo
ESTATE AGENTS



Certified
Property
Measurer

Floor plan produced in accordance with RICS Property Measurement Standards incorporating International Property Measurement Standards (IPMS2 Residential). © nitchcom 2023. Produced for Alex & Matteo Estate Agents. REF: 999328

Energy Efficiency Rating		Current	Potential
Very energy efficient - lower running costs			
(92 plus) A			
(81-91) B			
(69-80) C			
(55-68) D		60	70
(39-54) E			
(21-38) F			
(1-20) G			
Not energy efficient - higher running costs			
England & Wales		EU Directive 2002/91/EC	