

## Spa Road, London, SE16 3FD

A stylish two bedroom, two bathroom apartment located in Bermondsey. A walk away from Bermondsey Spa Gardens well as having excellent transport links.

Boasting a large reception room with access to a private south facing balcony spanning the apartment, a modern kitchen alcove and sleek family bathroom. The apartment features two double bedrooms, one with additional storage and ensuite bathroom. Additional built in storage can be found in the hallway.

A walk away from Bermondsey underground station as well as many other local amenities such as cafes, restaurants, boutique shops and breweries.

This property is offer furnished as is available to move in ASAP.

- Private South Facing Balcony
- Fully Furnished
- Excellent Transport Links
- Built In Storage
- Plenty of Natural Lighting

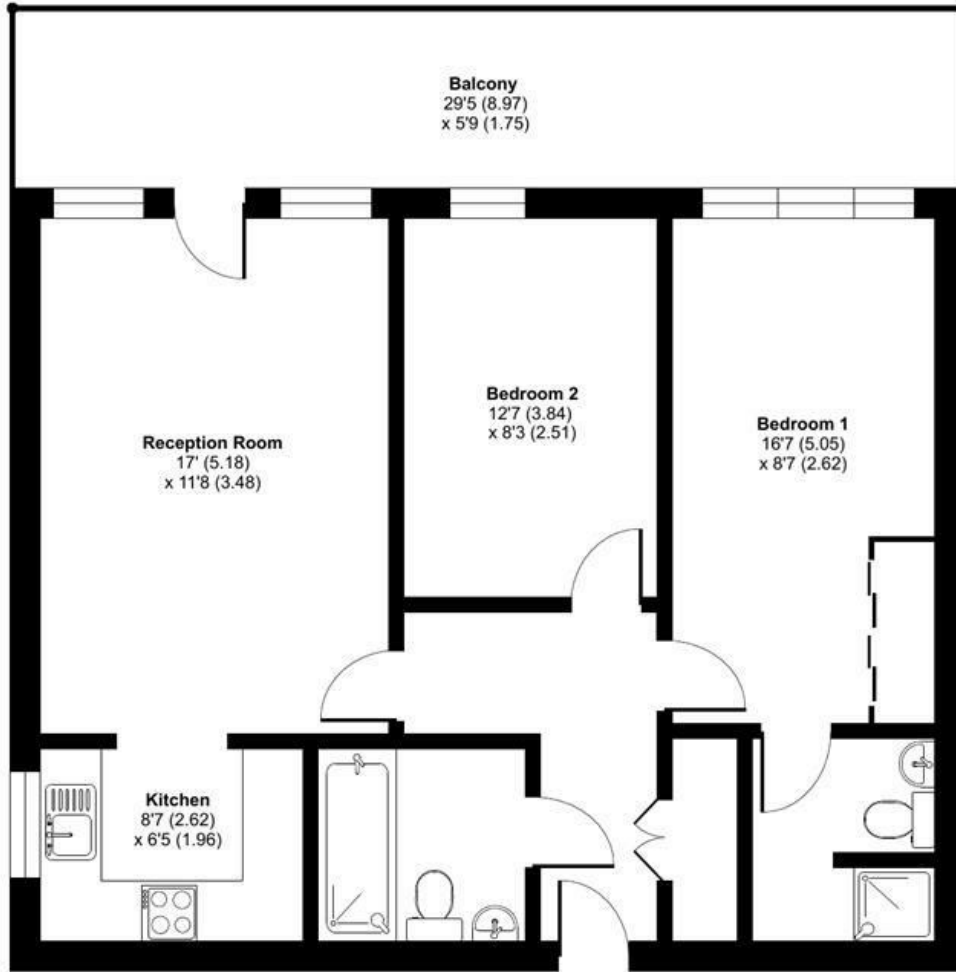
**Alex & Matteo**  
ESTATE AGENTS

**£2,400 Per month**

# Sandover House, Spa Road, London, SE16

Approximate Area = 703 sq ft / 65.3 sq m

For identification only - Not to scale



GROUND FLOOR



Floor plan produced in accordance with RICS Property Measurement Standards incorporating International Property Measurement Standards (IPMS2 Residential). © nitchcom 2023. Produced for Alex & Matteo Estate Agents. REF: 1126204

Energy Efficiency Rating		Current	Potential
Very energy efficient - lower running costs			
(92 plus) <b>A</b>			
(81-91) <b>B</b>		77	77
(69-80) <b>C</b>			
(55-68) <b>D</b>			
(39-54) <b>E</b>			
(21-38) <b>F</b>			
(1-20) <b>G</b>			
Not energy efficient - higher running costs			
England & Wales		EU Directive 2002/91/EC	