



Rotherhithe New Road, London, SE16 2DT

Guide Price: £300,000 to £325,000. A recently refurbished one bedroom apartment located a stroll away from Southwark Park, Surrey Quays Overground, Canada Water and Bermondsey Stations.

Featuring a stylish modern kitchen, a bright south facing reception room with access to a balcony, a double bedroom with plenty of storage space, a sleek bathroom and generous utility room. Additional built-in storage can be found in the hallway.

Walking distance from a plethora of local amenities such as Surrey Quays Shopping Centre, restaurants, cafes, supermarkets, cinema and gyms.

Years Left on Lease - 118

Annual Service Charge including hot water and heating - £2868.61

Annual Ground Rent - £10

Council Tax Band - B

Council tax and, where applicable, lease information, service charges and ground rent are given as a guide only and should always be checked and confirmed by your Solicitor prior to exchange of contracts.

- Recently Refurbished Apartment
- Great Transport Links
- Plenty of Storage Space
- Balcony
- Modern Kitchen
- Excellent Location

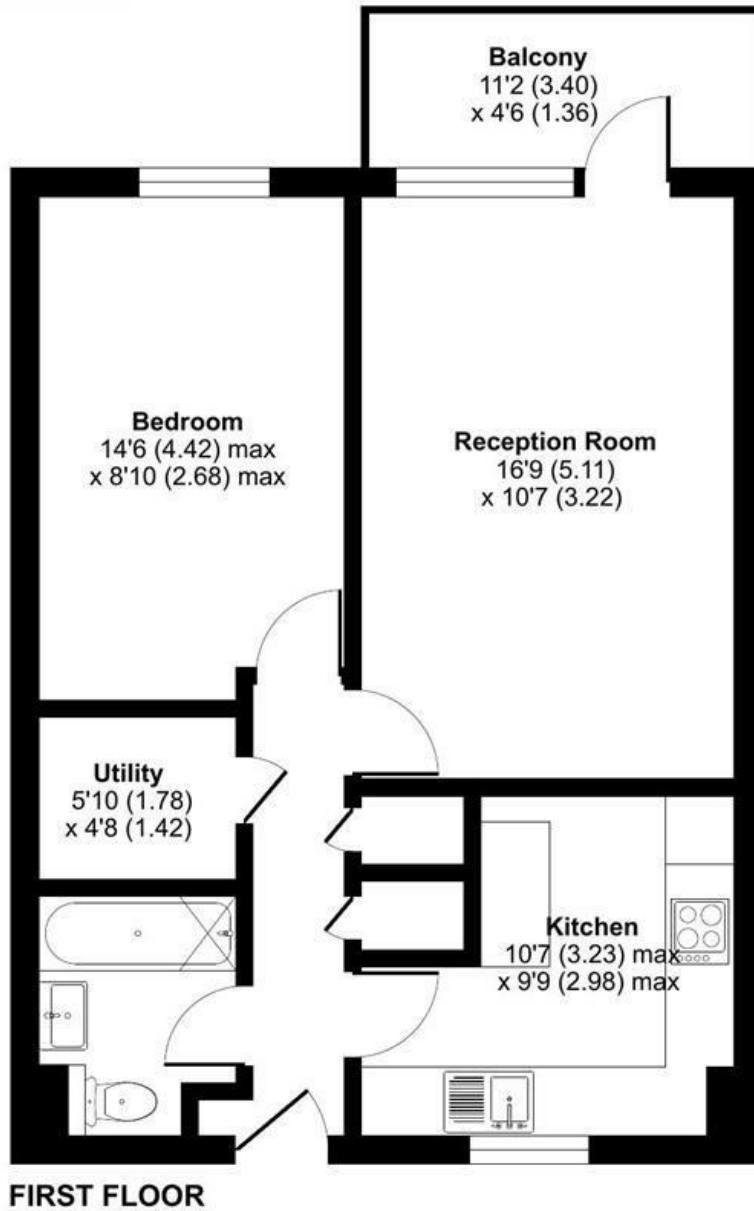
Alex & Matteo
ESTATE AGENTS

Guide price £300,000

Rotherhithe New Road, London, SE16

Approximate Area = 541 sq ft / 50.2 sq m

For identification only - Not to scale



Alex & Matteo
ESTATE AGENTS



Floor plan produced in accordance with RICS Property Measurement Standards incorporating International Property Measurement Standards (IPMS2 Residential). © nitchcom 2024. Produced for Alex & Matteo Estate Agents. REF: 1116133.

