



## Queen Of Denmark Court, London, SE16 7TB

A generous top floor duplex apartment with private terrace in sought-after riverside development in Canada Water / Surrey Quays: Queen of Denmark. Spread over two floors and located on the banks of the river Thames, the property boasts two spacious reception rooms, a well kept kitchen, two double bedroom with plenty of storage space, and a contemporary bathroom downstairs. The property is complimented by a terrace overlooking the Thames and the City Skyline. Canada Water and Surrey Quays stations are within easy reach and the Greenland Pier for a 5 minute commute to Canary Wharf via Thames Clipper is just round the corner.

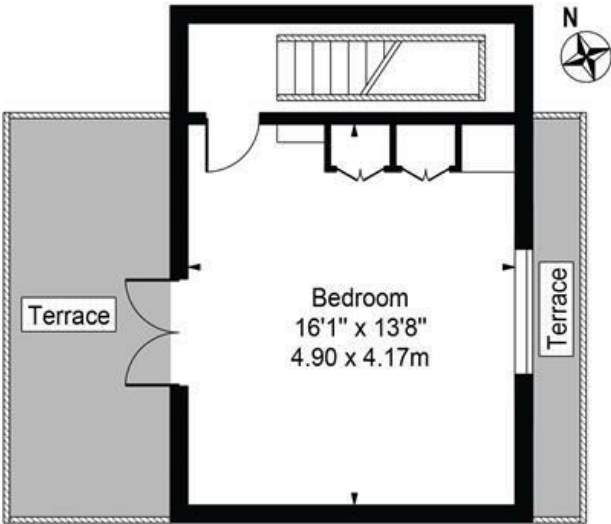
- Riverside Development
- Top Floor Duplex / Penthouse
- Private Terrace
- Generous Double Bedrooms
- Stunning Views
- Modern Kitchen
- Two Reception Rooms

**Alex & Matteo**  
ESTATE AGENTS

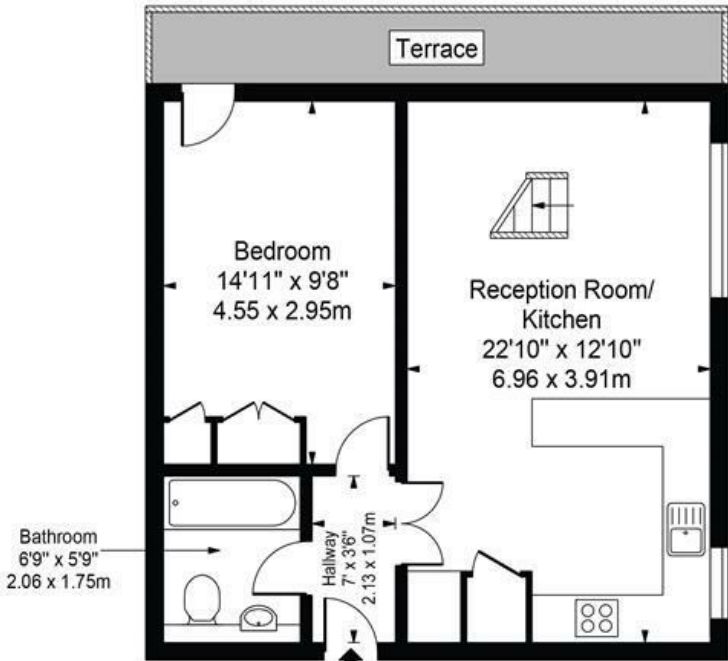
**£2,145**

# Princes Court

Approx. Gross Internal Area 801 Sq Ft - 74.42 Sq M



Fourth Floor



Third Floor

For Illustration Purposes Only - Not To Scale

This floor plan should be used as a general outline for guidance only and does not constitute in whole or in part an offer or contract. Any intending purchaser or lessee should satisfy themselves by inspection, searches, enquiries and full survey as to the correctness of each statement. Any areas, measurements or distances quoted are approximate and should not be used to value a property or be the basis of any sale or let.

Energy Efficiency Rating		
	Current	Potential
Very energy efficient - lower running costs		
(92 plus) <b>A</b>		
(81-91) <b>B</b>	77	77
(69-80) <b>C</b>		
(55-68) <b>D</b>		
(39-54) <b>E</b>		
(21-38) <b>F</b>		
(1-20) <b>G</b>		
Not energy efficient - higher running costs		
England & Wales <small>EU Directive 2002/91/EC</small> 