



## Woodfield House Tangmere Road

Oving, Chichester, PO20 2PB

£1,050



Signature Properties South is delighted to present this semi-rural, modern, yet characterful development of 1&2 bedroom apartments.

The fitted kitchen is equipped with ample storage, a built-in oven with an extractor hob, and integrated appliances including a dishwasher and fridge/freezer. The naturally lit double bedroom provides a comfortable retreat, while the bathroom includes a low-level WC, a bath with a glazed folding screen and shower overhead, a wash hand basin with a built-in vanity surround, and space with plumbing for a washing machine.

Outside you will find communal gardens, parking and bicycle storage.

Tenancy Length: 12 month tenancies renewed annually (6 month tenancies can be discussed).

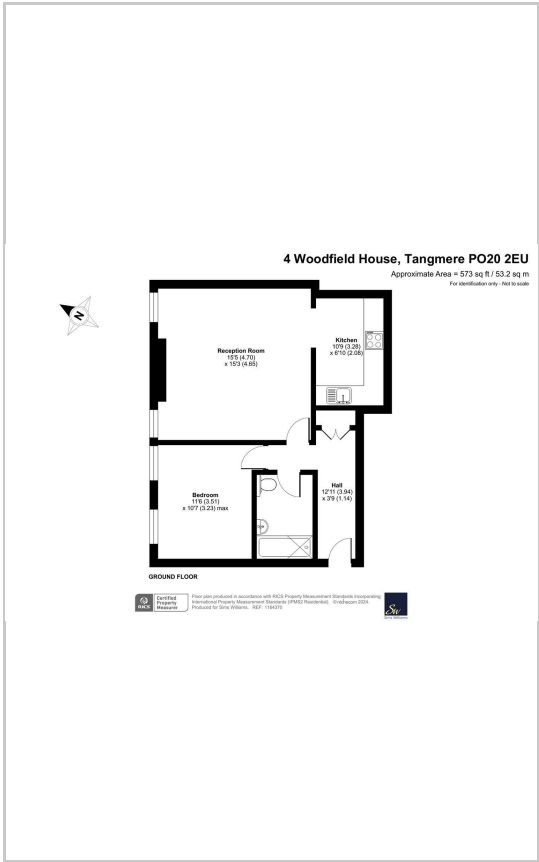
\*\*\*All applicants will be credit-checked and fully referenced prior to a tenancy commencing. You will be required to pay the first month's rent and a security deposit prior to moving in. The deposit is equivalent of five



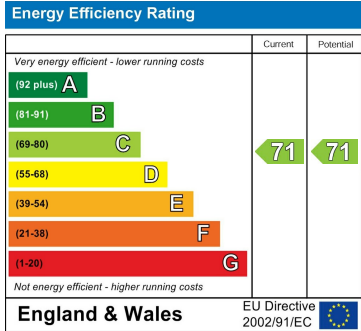
Area Map



Floor Plans



Energy Efficiency Graph



These particulars, whilst believed to be accurate are set out as a general outline only for guidance and do not constitute any part of an offer or contract. Intending purchasers should not rely on them as statements of representation of fact, but must satisfy themselves by inspection or otherwise as to their accuracy. No person in this firms employment has the authority to make or give any representation or warranty in respect of the property.