



18 Connemara Crescent

Fontwell, Arundel, BN18 0ZD

£1,750 PCM

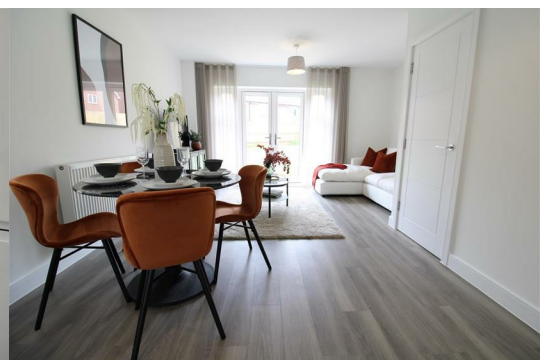


Signature Properties are delighted to offer to the rental market this beautiful, three bedroom, Semi- detached town house in Fontwell, West Sussex with easy access to the A27 to either Chichester or Brighton.

The ground floor of the property has open plan living including lounge/ diner and a beautiful kitchen with integrated fridge/freezer, oven/hob, washing machine and dishwasher. Downstairs also has a WC and access to a spacious enclosed rear garden and side gate to the driveway. The first floor offers a family bathroom with shower over the bath, a double and a spacious single bedroom. The third floor has the master bedroom with built in wardrobe and shower ensuite. The property also benefits from gas central heating, double glazing, integrated appliances and driveway parking for multiple cars.

Surely not to hang around for long, to avoid disappointment please get in touch with us for a viewing.

Tenancy Length: 12 month tenancies renewed annually (6 month tenancies can be discussed). Pets will be considered at an additional rent of £25 per month, per pet.



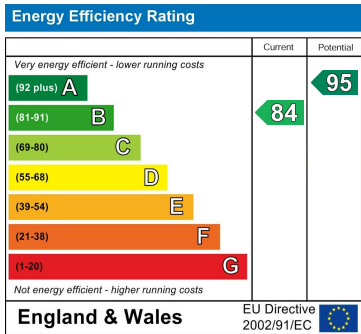
Area Map



Floor Plans



Energy Efficiency Graph



These particulars, whilst believed to be accurate are set out as a general outline only for guidance and do not constitute any part of an offer or contract. Intending purchasers should not rely on them as statements of representation of fact, but must satisfy themselves by inspection or otherwise as to their accuracy. No person in this firms employment has the authority to make or give any representation or warranty in respect of the property.