



Flat 6 1 Silvester Road

, Waterlooville, PO8 8TD

£975 Per month



Signature Properties are delighted to offer to the market this beautiful, one bedroom apartment situated on Silvester Road in Cowplain, a short stroll from the local shops.

The living accommodation comprises of a spacious, open plan lounge/kitchen with multiple windows which flood the room with natural light. The kitchen comes with integrated appliances which include, fridge/freezer, dishwasher, Oven/hob & washing machine. you also have a spacious double bedroom and modern bathroom with a white three piece suite & shower over the bath. The property also benefits from gas central heating, double glazing and one allocated parking space. The fresh and water water supply's are charged at £40.00 pcm and will be paid monthly in advance with the rent. Viewing is highly recommended to appreciate the accommodation on offer.

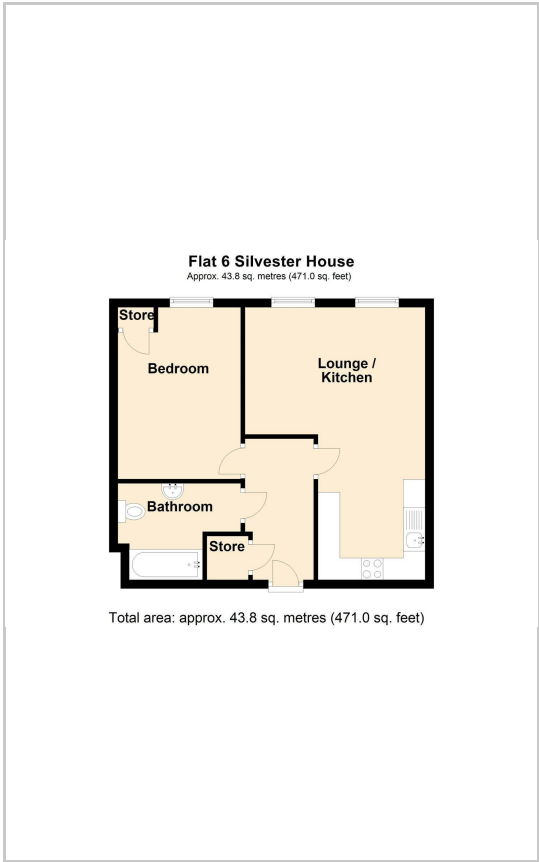
Floor plan measurements may not be accurate so please call to arrange your viewing, a video tour is also available on request.



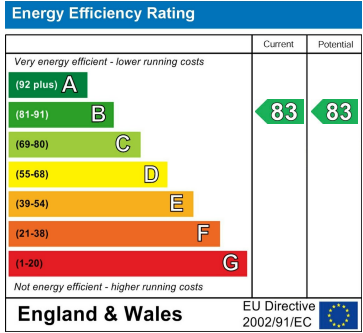
Area Map



Floor Plans



Energy Efficiency Graph



These particulars, whilst believed to be accurate are set out as a general outline only for guidance and do not constitute any part of an offer or contract. Intending purchasers should not rely on them as statements of representation of fact, but must satisfy themselves by inspection or otherwise as to their accuracy. No person in this firms employment has the authority to make or give any representation or warranty in respect of the property.