



1 Gunwharf Quays

, Portsmouth, PO1 3FS

£2,750 PCM

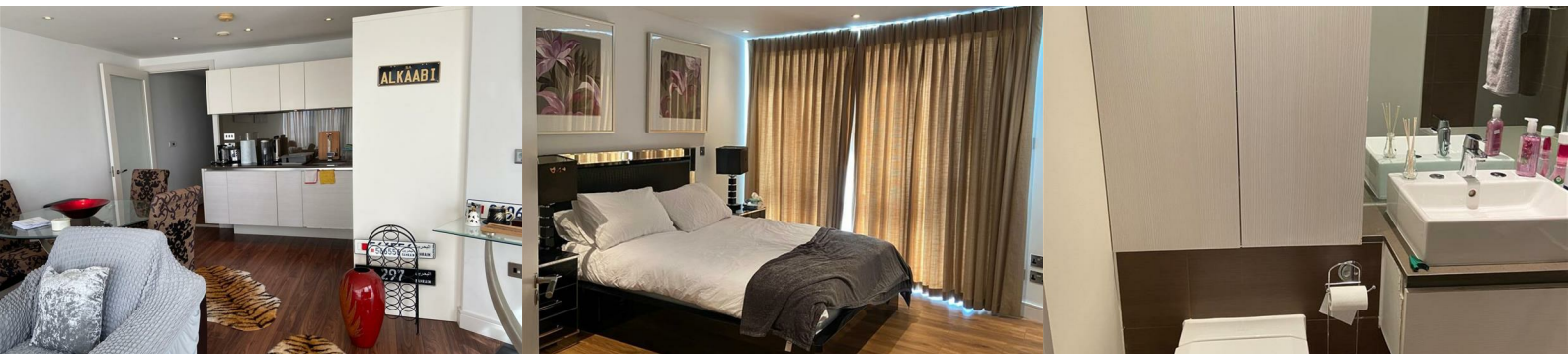


Signature Properties are delighted to offer to the market this stunning two double bedroom, fully furnished apartment situated on the 14th floor in the No 1 building with an allocated parking space and southerly panoramic views of Gunwharf. Right on the doorstep of Gunwharf you have access to shops, restaurants the cinema and walking distance to the beach and commons it is a fantastic and vibrant location.

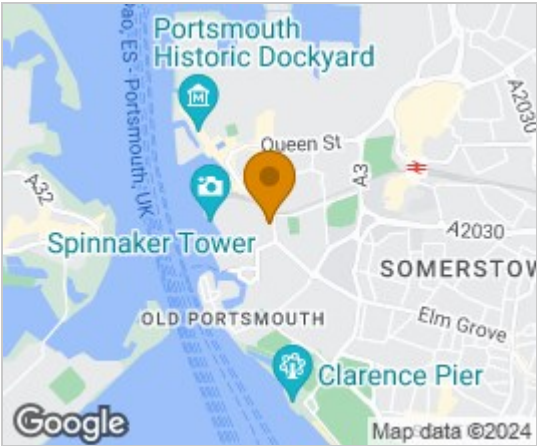
The living accommodation comprises of an open plan kitchen/lounge with microwave oven, fridge/freezer, miniature dishwasher & washing machine. The lounge area provides lovely panoramic views of Gunwharf. The master bedroom has a built-in wardrobe and ensuite shower; there is a further double bedroom and a modern bathroom with a shower over the bath. The property benefits from electric underfloor heating, double glazing, and an allocated parking space in the basement and the rent includes the water charges.

Floor plan measurements may not be accurate so please contact us to arrange your viewing. Tenancy Length: 12 month tenancies renewed annually (6 month tenancies can be discussed).

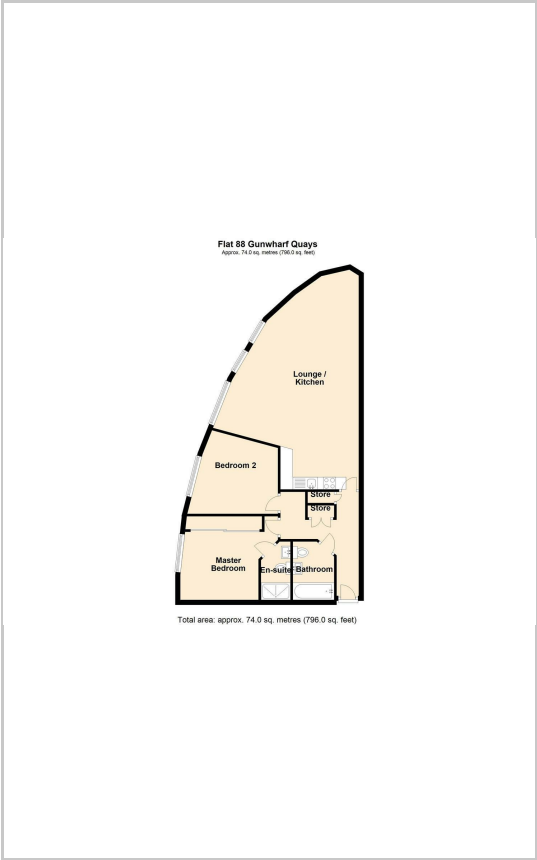
***All applicants will be credit checked and fully referenced prior to a tenancy commencing. You will be required to pay the first month's rent and a security deposit prior to moving in. The deposit is equivalent of five



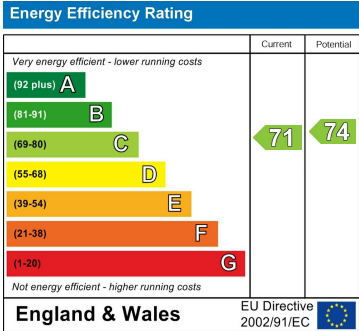
Area Map



Floor Plans



Energy Efficiency Graph



These particulars, whilst believed to be accurate are set out as a general outline only for guidance and do not constitute any part of an offer or contract. Intending purchasers should not rely on them as statements of representation of fact, but must satisfy themselves by inspection or otherwise as to their accuracy. No person in this firm's employment has the authority to make or give any representation or warranty in respect of the property.