



42 Mafeking Road

, Southsea, PO4 9BE

£1,400



Signature Properties are delighted to offer to the market this two bedroom, terraced home on Mafeking Road, Portsmouth, just a mile walk to the seafront.

This two Bedroom terraced house to rent in Portsmouth is offered unfurnished and available from August. The property comprises of an entrance hallway leading to lounge, downstairs bathroom and modern kitchen leading out to the rear patio garden. Upstairs offers two double bedrooms. Further benefits include double glazing and gas central heating.

Pets will be considered at an additional rent of £25 per month.

Tenancy Length: 12 month tenancies renewed annually (6 month tenancies can be discussed)

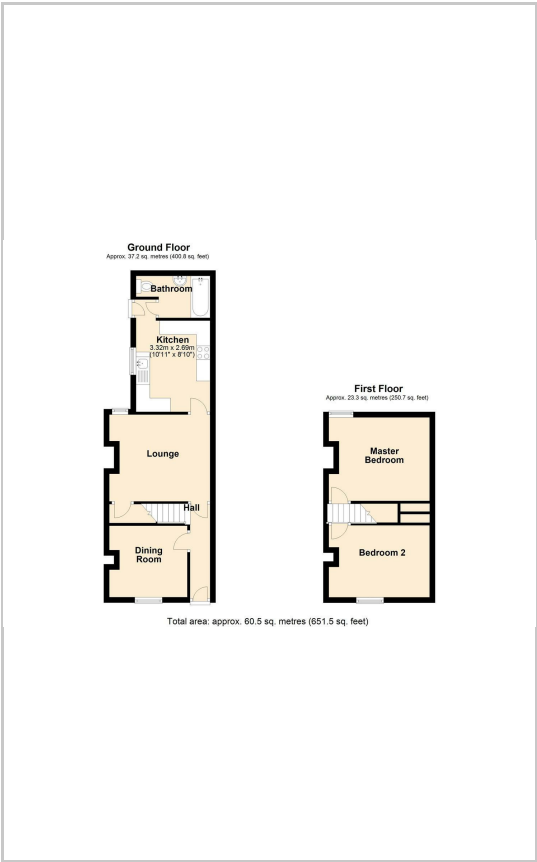
***All applicants will be credit checked and fully referenced prior to a tenancy commencing. You will be required to pay the first month's rent and a security deposit prior to moving in. The deposit is equivalent of five weeks rent ***



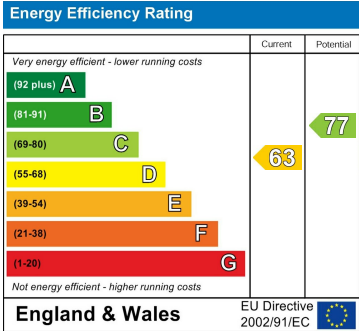
Area Map



Floor Plans



Energy Efficiency Graph



These particulars, whilst believed to be accurate are set out as a general outline only for guidance and do not constitute any part of an offer or contract. Intending purchasers should not rely on them as statements of representation of fact, but must satisfy themselves by inspection or otherwise as to their accuracy. No person in this firm's employment has the authority to make or give any representation or warranty in respect of the property.