



## 1 Keepers Cottage Tunworth Road

Mapledurwell, Basingstoke, RG25 2LU

£1,750



Signature Properties are delighted to offer to the market this beautifully refurbished, three-bedroom, semi-detached house where modern comfort meets classic character, nestled in the serene picturesque village of Mapledurwell. The property is located on the secluded Tunworth Road in a rural spot with easy access routes to the M3, ideal for commuters.

This stunning, high-specification property includes a kitchen with an integrated oven, hob and fridge/freezer.

Dining area, spacious lounge with bi-folding doors leading to the enclosed rear garden and a w.c. Upstairs, you have two double bedrooms with shower ensuite to the master, a single bedroom and a family bathroom with a separate shower cubicle.

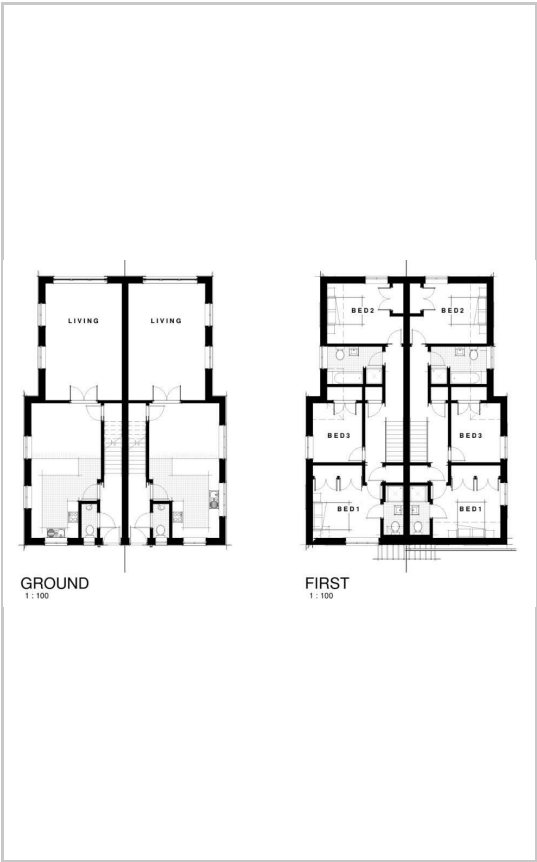
The property also benefits from a garage and driveway parking, double glazing and gas central heating.



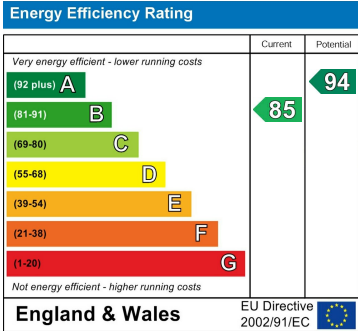
### Area Map



### Floor Plans



### Energy Efficiency Graph



These particulars, whilst believed to be accurate are set out as a general outline only for guidance and do not constitute any part of an offer or contract. Intending purchasers should not rely on them as statements of representation of fact, but must satisfy themselves by inspection or otherwise as to their accuracy. No person in this firms employment has the authority to make or give any representation or warranty in respect of the property.