



## 1 Bluebell Corner

Knowle, Fareham, PO17 5QF

£2,000

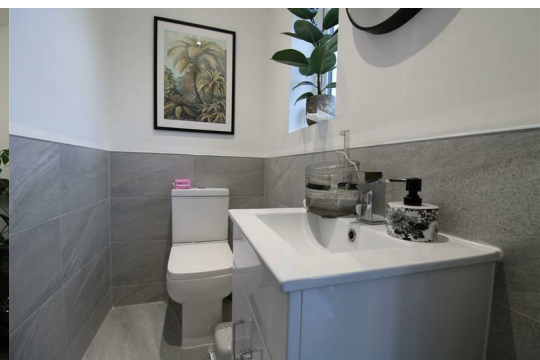
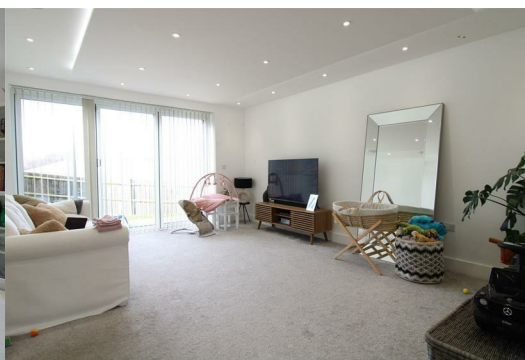


Signature Properties are delighted to introduce to the market this stunning link-detached, three bedroom, family home located on Mayles Lane, Knowle.

The property boasts a spacious kitchen/ breakfast area including integrated fridge/freezer, washing machine, dishwasher and wine cooler. Bi-folding doors lead out to a beautiful enclosed rear garden that is not overlooked. Downstairs you also have a spacious lounge with another set of Bi-folding doors to the garden and a W.C. Upstairs you have the master bedroom with ensuite and two further double bedrooms, family bathroom and master bedroom with shower ensuite. Further benefits include underfloor heating, parking for two vehicles and a garage. Available soon so please get in touch with us to avoid missing out on this beautifully specked property!

Floor plan measurements may not be accurate so please call to arrange your viewing.

Pets will be considered at an additional rent of £25 per month.



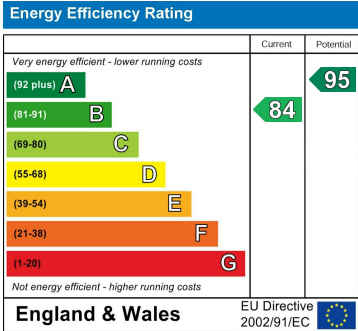
### Area Map



### Floor Plans



### Energy Efficiency Graph



These particulars, whilst believed to be accurate are set out as a general outline only for guidance and do not constitute any part of an offer or contract. Intending purchasers should not rely on them as statements of representation of fact, but must satisfy themselves by inspection or otherwise as to their accuracy. No person in this firms employment has the authority to make or give any representation or warranty in respect of the property.