



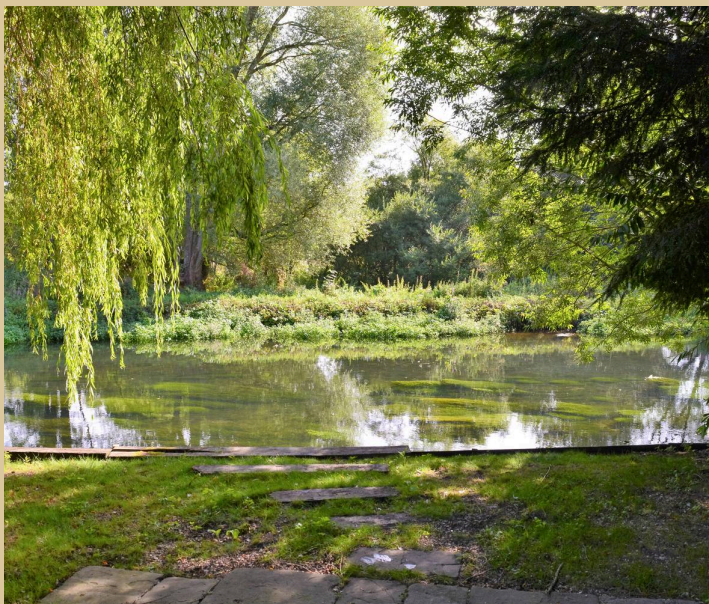
Tanyard House, The Tanyard, Chilton Foliat
£2,600 pcm



Tanyard House, The Tanyard

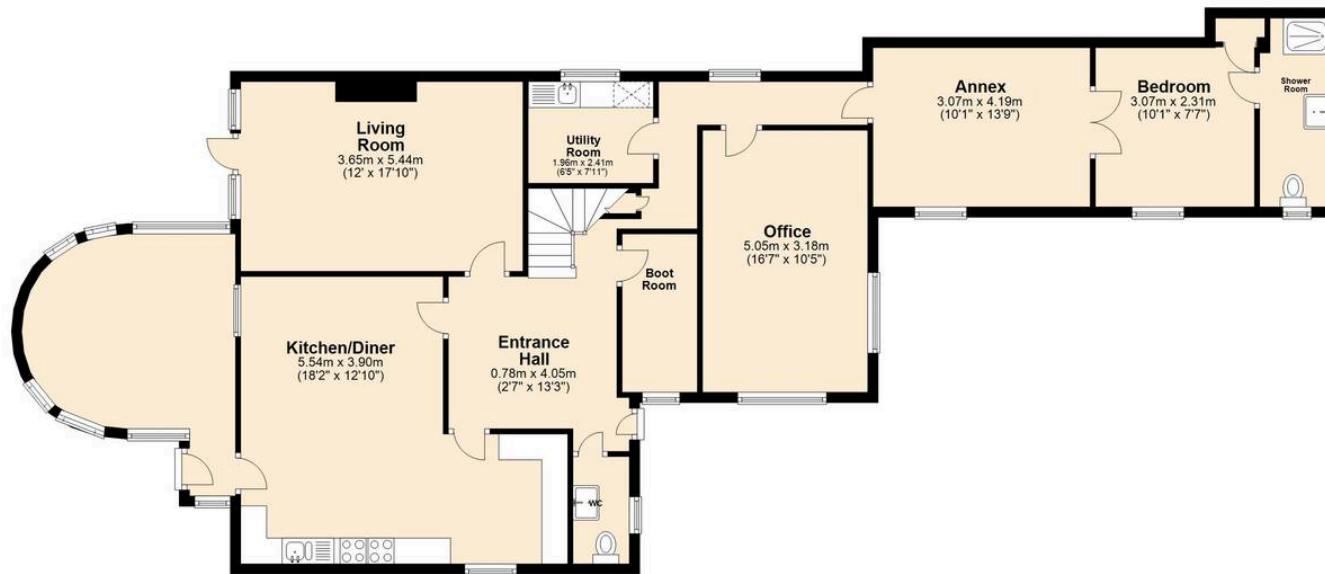
Chilton Foliat, Hungerford

Tanyard House is a deceptively spacious detached family home offering versatile accommodation throughout and direct access to the river which flows at the bottom of the large rear garden. The property itself comes with a large entrance hall, downstairs cloakroom, boot room, home office with fitted units, utility room, large kitchen/diner, conservatory with access onto the patio area, and a lovely cosy living room with an open fireplace. To the first floor the property boasts four spacious bedrooms with the master bedroom benefiting from en-suite bathroom, completing the first floor is a family bathroom. There is the distinct advantage of a self contained annex (if required) situated on the ground floor and comprising a sitting room, kitchen facilities and bedroom and en-suite shower room. Outside the property comes with a tremendous rear garden that comprises patio area leading from the conservatory with steps down to the large lawn with panoramic views of the river Kennet. For added convenience, the property comes parking for up to three vehicles on the driveway



Ground Floor

Approx. 152.7 sq. metres (1643.3 sq. feet)



First Floor

Approx. 80.2 sq. metres (863.3 sq. feet)



Total area: approx. 232.9 sq. metres (2506.6 sq. feet)

McFarlane Sales & Lettings

McFarlane Sales & Letting, 106 High Street – SN8 1LT

01672 514380 • marlborough@mcfarlaneproperty.com • www.mcfarlaneproperty.com/

mcfarlane
property.com