



1 St. Johns Mews New Road, Marlborough

Guide Price £360,000

mcFarlane
property.com



1 St. Johns Mews New Road

A well-presented and deceptively spacious four bedroom home, superbly located just moments from Marlborough High Street. Offering versatile accommodation arranged across three floors, this property combines generous living space with modern convenience, making it an excellent choice for professionals, downsizers, or anyone seeking a low-maintenance home in a prime central location. On the ground floor, there are two comfortable double bedrooms, each benefiting from fitted wardrobes, along with a contemporary shower wet room. Practical under-stair storage and carpeting throughout this level create a warm and inviting feel.

The first floor hosts the principal double bedroom, which features a fitted wardrobe and an impressive bay window that floods the room with natural light. There is also an additional bedroom on this floor, along with a stylish family bathroom fitted with a modern white Roca suite including a bath and heated towel rail.

The top floor is dedicated to an open-plan kitchen and sitting room, a wonderfully bright and versatile space ideal for both everyday living and entertaining. A large bay window offers views across Marlborough's distinctive architecture, while the kitchen itself is thoughtfully designed with ample storage solutions, a gas cooker, and a range of integrated appliances. Wood flooring adds to the contemporary finish of this superb living area.



Further benefits include a video entry system and the rare advantage of private allocated parking – a true premium in this sought-after central location.

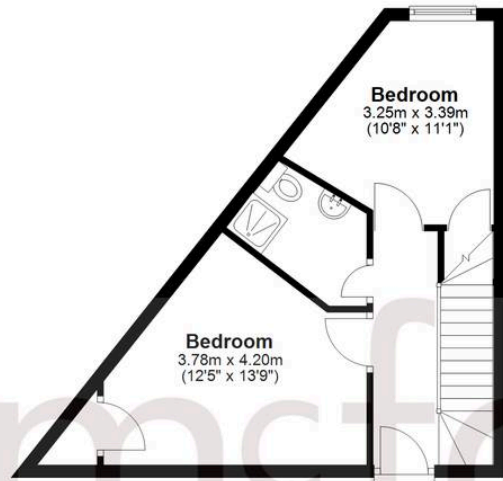
This property represents exceptional value for the amount of space on offer and provides a fantastic opportunity for those looking for a stylish, well-maintained home in the very heart of Marlborough. With no garden to maintain and accommodation arranged for convenience, it is perfectly suited to those seeking a low-maintenance, lock-up-and-leave lifestyle right on the doorstep of the town centre.

- End Of Terrace Town House
- Four Bedrooms
- Bright open-plan living/kitchen
- Rare private allocated parking space in central Marlborough



Ground Floor

Approx. 31.6 sq. metres (340.1 sq. feet)



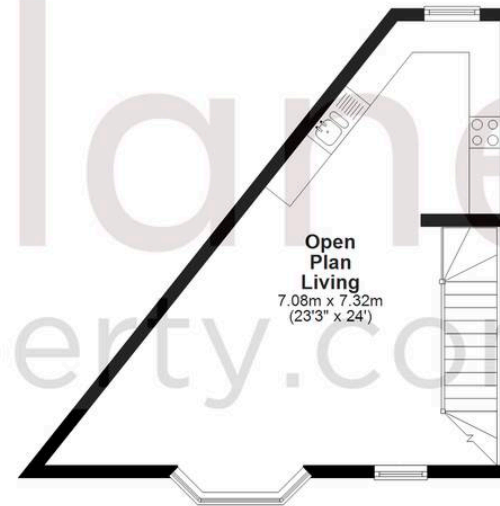
First Floor

Approx. 31.8 sq. metres (342.3 sq. feet)



Second Floor

Approx. 31.8 sq. metres (342.7 sq. feet)



Total area: approx. 95.2 sq. metres (1025.0 sq. feet)

McFarlane Sales & Lettings

McFarlane Sales & Letting, 106 High Street – SN8 1LT

01672 514380 • marlborough@mcfarlaneproperty.com • www.mcfarlaneproperty.com/

mcfarlane
property.com