



46 Whittonditch Road, Ramsbury

Prices From £1,750 pcm

mcFarlane  
property.com



## 46 Whittonditch Road

This chain-free freehold property combines charm, comfort, and modern living, making it an ideal choice for families in need of spacious accommodation. With gas central heating and double glazing throughout, the home is energy-efficient and warm all year round. The ground floor impresses with its generous layout, starting with an inviting entrance hall featuring wooden flooring. This leads to a cozy, carpeted sitting room with a log burner on a raised brick hearth—perfect for unwinding by the fire.

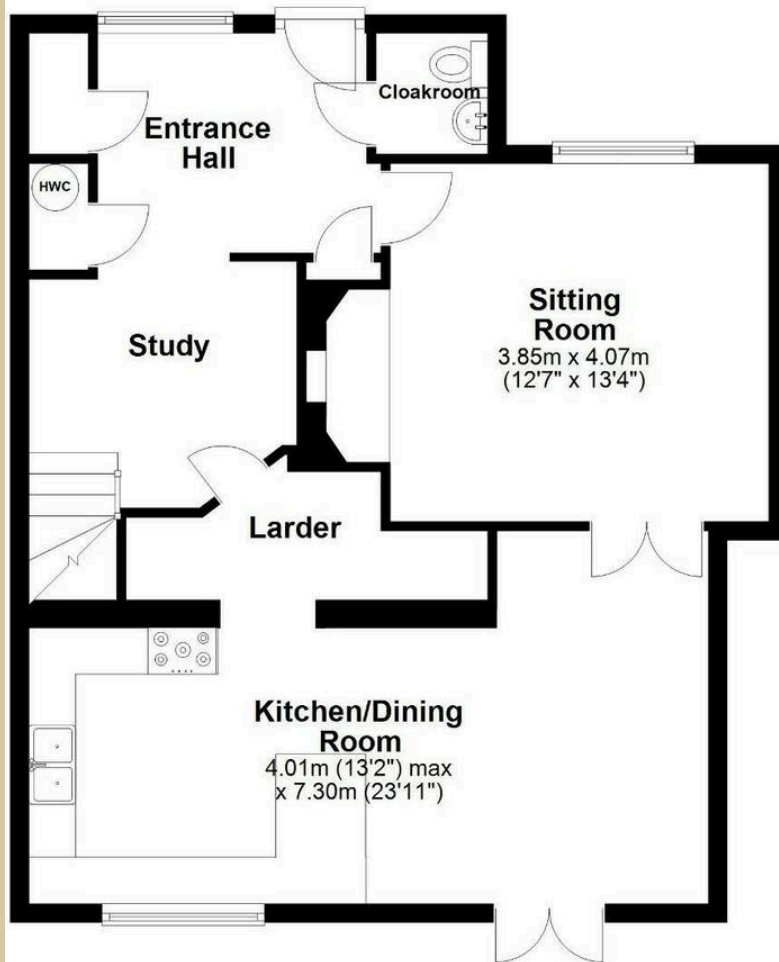
The heart of the home is the expansive kitchen/dining room, which blends style and functionality. Featuring wooden floors, contemporary tiles, a range cooker, base units, a breakfast bar, and a Belfast-style sink with a charming beech drainer, this space is perfect for culinary enthusiasts. Stripped pine flooring adds a rustic touch, while French doors open onto the garden, providing an easy transition between indoor and outdoor spaces for family gatherings or entertaining.

Upstairs, the property continues to impress with its carpeted floors and four generously sized bedrooms. The master bedroom features stripped pine floors and a dressing room with fitted shelving. The other bedrooms all include built-in wardrobes, and two offer fitted desks and clever storage, making them ideal for children's rooms, guest spaces, or home offices. The spacious family bathroom is both stylish and functional, featuring a bath, separate shower, vanity unit, heated towel rail, and luxurious underfloor heating.



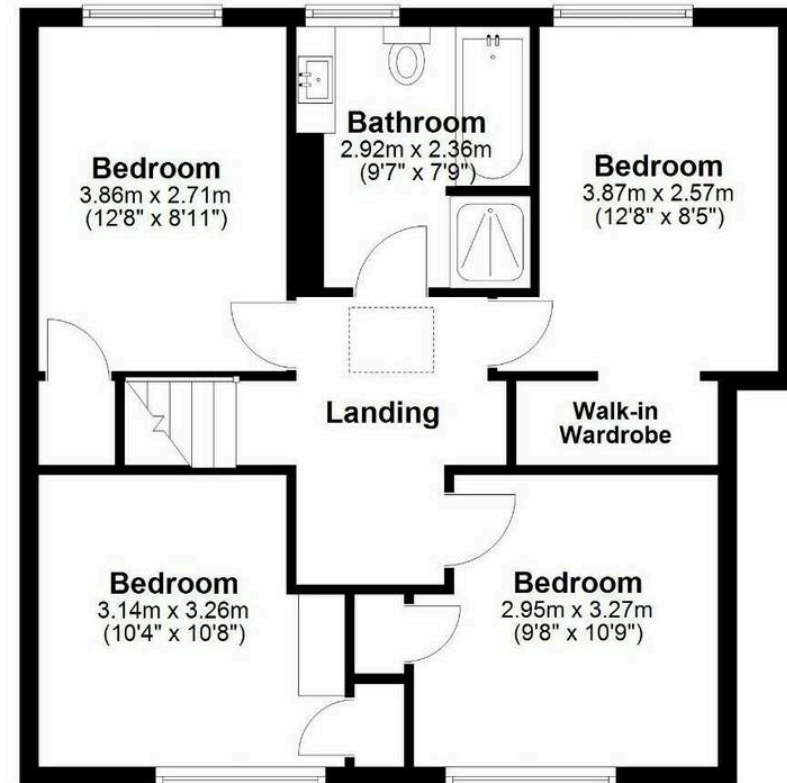
## Ground Floor

Approx. 67.5 sq. metres (726.1 sq. feet)



## First Floor

Approx. 60.7 sq. metres (653.7 sq. feet)



Total area: approx. 128.2 sq. metres (1379.9 sq. feet)

This floor plan is for illustrative purposes only, areas, measurements and distances given are approximate. Any prospective purchaser should satisfy themselves as to precise dimensions.

Plan produced using PlanUp.

**46 Whittonditch Road, Ramsbury, Marlborough**

## McFarlane Sales & Lettings

McFarlane Sales & Letting, 106 High Street – SN8 1LT

01672 514380 • [marlborough@mcfarlaneproperty.com](mailto:marlborough@mcfarlaneproperty.com) • [www.mcfarlaneproperty.com/](http://www.mcfarlaneproperty.com/)

**mcfarlane**  
property.com