



35 Barrow Close, Marlborough

Guide Price **£395,000**

mcfarlane
property.com

35 Barrow Close

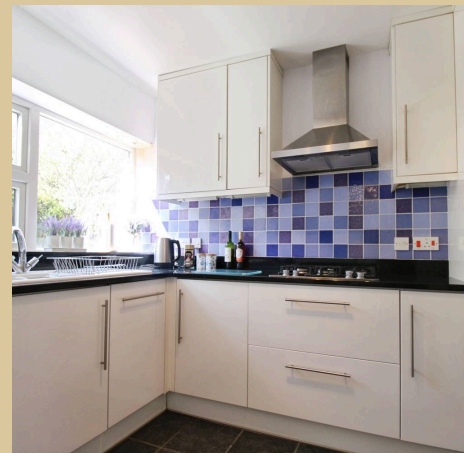
Extended Family Home with South-Facing Garden and Versatile Living Space

This bright and well-maintained extended family home offers a fantastic blend of space, practicality, and comfort, all in a good location within walking distance of the High Street and close to local playing fields—ideal for families and outdoor enthusiasts.

A brick-paved driveway (shared access) provides off-street parking for 2–3 vehicles.

Upon entering, you're welcomed into a spacious entrance hall—perfect for storing coats and shoes. The generous sitting room, extended to the front, enjoys plenty of natural light and flows beautifully into the separate dining room. French doors open out onto the sunny, south-facing patio, creating a lovely indoor-outdoor feel—ideal for entertaining.

The well-appointed kitchen is fitted with ample storage, a Neff oven, gas hob, integrated dishwasher and fridge freezer. Just off the kitchen is a practical utility room with tiled flooring, back access to the garden, and a modern shower room with WC. A handy store room with wooden flooring provides additional cupboard space and leads through to a flexible office or hobby room—perfect for working from home or creative pursuits.



Upstairs, you'll find two spacious double bedrooms—both with fitted wardrobes—and a good-sized single bedroom. The family bathroom has been modernised and features a shower over the bath and a heated towel rail. Outside, the rear garden is south-facing and designed for low maintenance, offering a peaceful and sunny space to relax.

Additional features include gas central heating, full double glazing throughout, and a security alarm system.

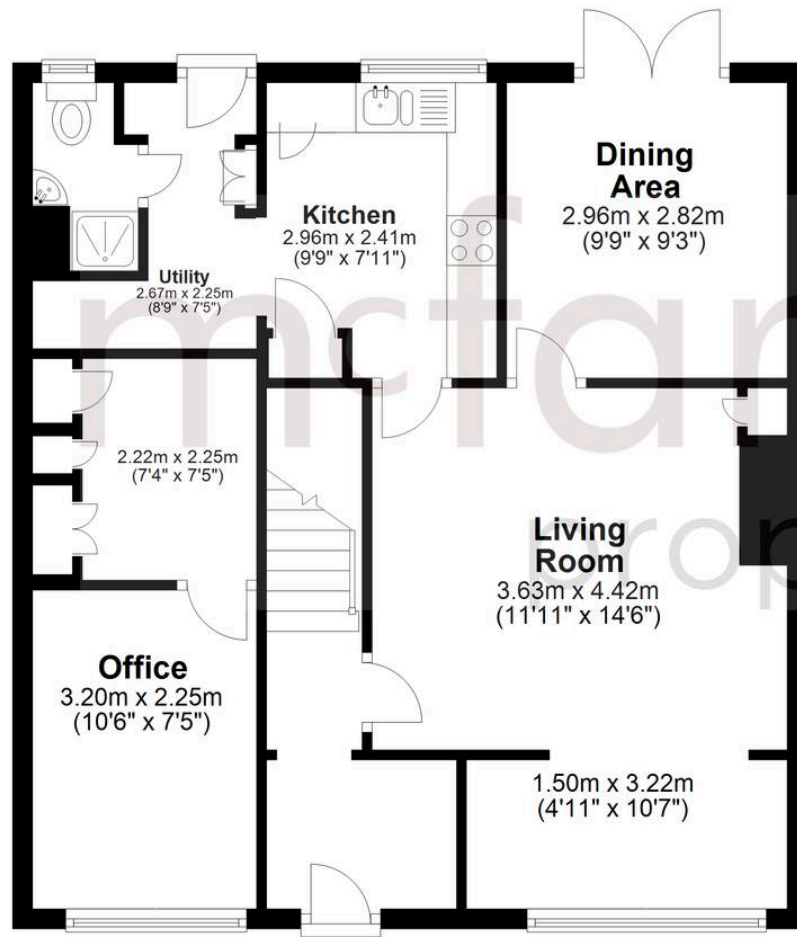
Neutrally decorated throughout, this home is bright, welcoming, and ready to move into.

- Extended Three Bed Semi-Detached
- No Onward Chain
- Close proximity to the High Street
- South Facing Garden
- Driveway for multiple cars



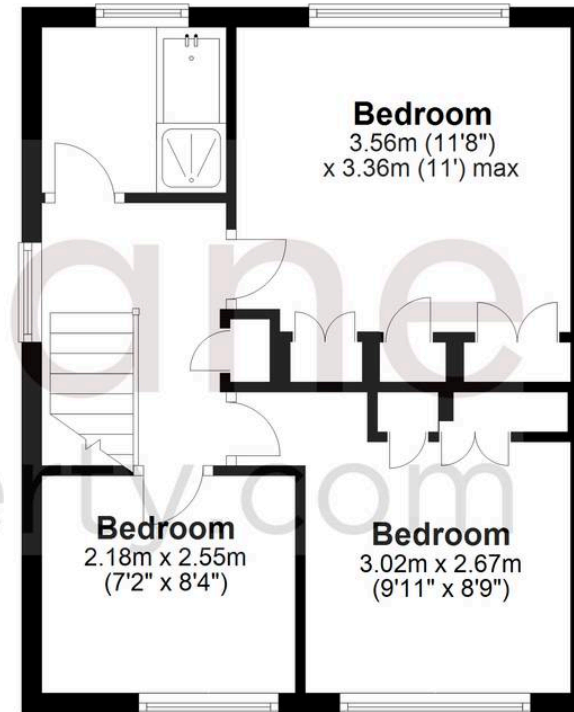
Ground Floor

Approx. 65.2 sq. metres (701.7 sq. feet)



First Floor

Approx. 35.5 sq. metres (382.1 sq. feet)



Total area: approx. 100.7 sq. metres (1083.8 sq. feet)

McFarlane Sales & Lettings

McFarlane Sales & Letting, 106 High Street – SN8 1LT

01672 514380 • marlborough@mcfarlaneproperty.com • www.mcfarlaneproperty.com/

mcfarlane
property.com