



Limerick, Marlborough Road, Swindon  
Swindon

£380,000



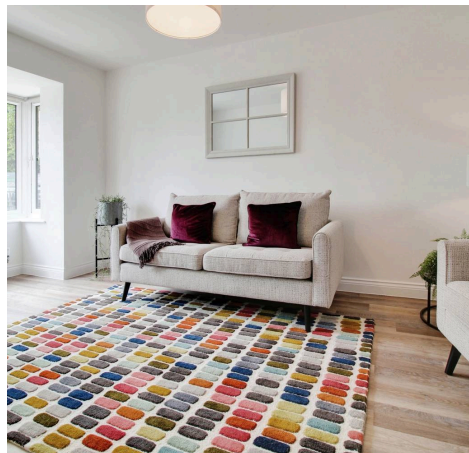


## Limerick, Marlborough Road

Swindon

Introducing this IMPRESSIVE and NEWLY BUILT 4 Bedroom End Of Terrace House, located in a sought-after area. This property is a gem waiting to be discovered. As you step inside, you'll be greeted by a home that exudes modern charm and sophistication. The property boasts a spacious and airy layout, perfect for growing families with the END TERRACE FAMILY HOME featuring a LARGE OPEN PLAN KITCHEN / DINING ROOM ideal for entertaining guests, a sizeable LIVING ROOM for relaxation, FOUR inviting BEDROOMS offering ample space, a convenient FAMILY BATHROOM, and an additional WC. Convenience is key with this home, offering THREE PARKING SPACES, ensuring parking is never a hassle for the whole family.

- NEW HOME
- READY TO MOVE INTO APRIL/MAY 2025
- END TERRACE FAMILY HOME
- LARGE OPEN PLAN KITCHEN / DINING ROOM
- FOUR BEDROOMS
- FAMILY BATHROOM AND WC
- THREE PARKING SPACES





## Hall

## Living

17' 4" x 9' 11" (5.28m x 3.01m)

## Kitchen

13' 7" x 10' 10" (4.14m x 3.30m)

## Dining

13' 7" x 7' 3" (4.14m x 2.22m)

## WC

## Landing

## Bedroom 1

9' 11" x 8' 11" (3.03m x 2.71m)

## En-suite

## Bedroom 2

13' 8" x 8' 11" (4.17m x 2.72m)

## Bedroom 3

10' 5" x 8' 9" (3.17m x 2.66m)

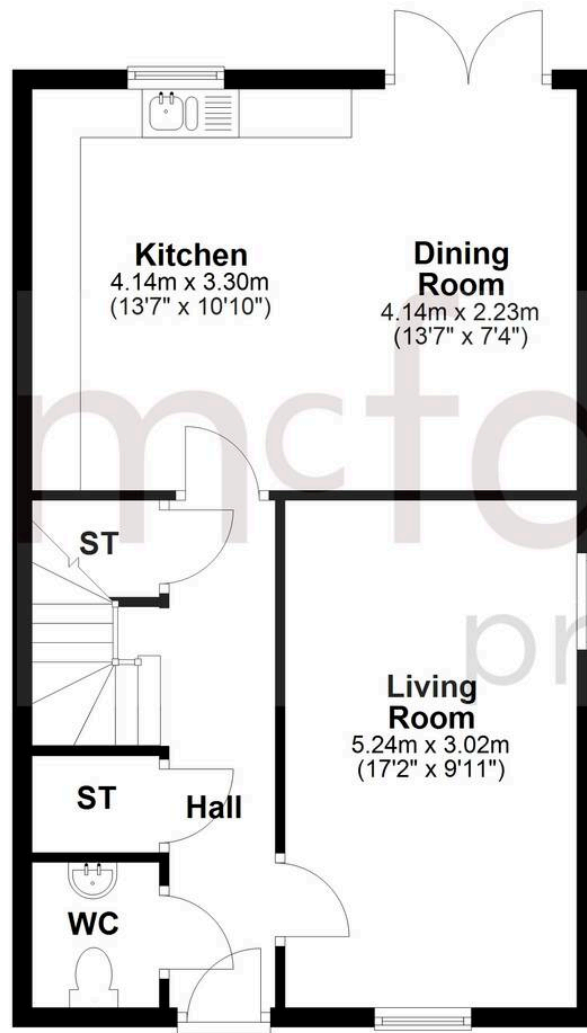
## Bedroom 4

9' 1" x 7' 10" (2.77m x 2.39m)

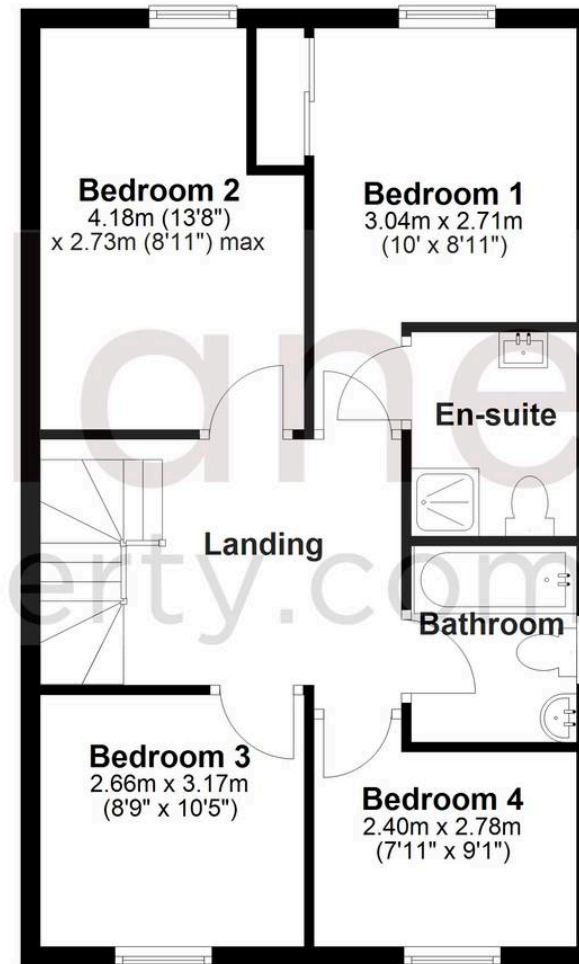
## Bathroom



## Ground Floor



## First Floor



## McFarlane Sales & Lettings

McFarlane Sales & Letting, 106 High Street – SN8 1LT

01672 514380 • [marlborough@mcfarlaneproperty.com](mailto:marlborough@mcfarlaneproperty.com) • [www.mcfarlaneproperty.com/](http://www.mcfarlaneproperty.com/)