



7 Maurice Way, Marlborough

Fixed Price £665,000 | £2,000

mcfarlane
property.com



7 Maurice Way

This impressive five-bedroom detached townhouse boasts a detached garage, a charming enclosed garden, and private parking, situated on the desirable eastern edge of Marlborough town. Spread across three floors, this delightful residence offers abundant light and adaptable living spaces. The welcoming entrance hall leads to a spacious dual-aspect sitting room featuring a stunning focal fireplace and elegant wooden flooring. The well-equipped kitchen/dining room is adorned with a fine array of units and boasts a magnificent large glazed bay window, complemented by French doors opening onto the adjacent patio, providing ample space for dining. Additionally, there's a convenient utility room and a cloakroom on this level.

The first floor reveals a master bedroom complete with built-in cupboards and an en suite shower room, alongside two further generously-sized bedrooms and a family bathroom, all accessed from a luminous and airy landing.

The second floor accommodates two more sizable bedrooms and a shower room.

The property is accessed via a gated drive leading to a detached single garage with adjacent storage space. Its enclosed garden is predominantly lawn, complemented by carefully manicured shrub and herbaceous borders featuring Apricot, Quince, and Fig trees. A sun terrace at the rear offers a picturesque setting for outdoor entertaining. Opposite the property, a communal green space, adorned with mature trees.

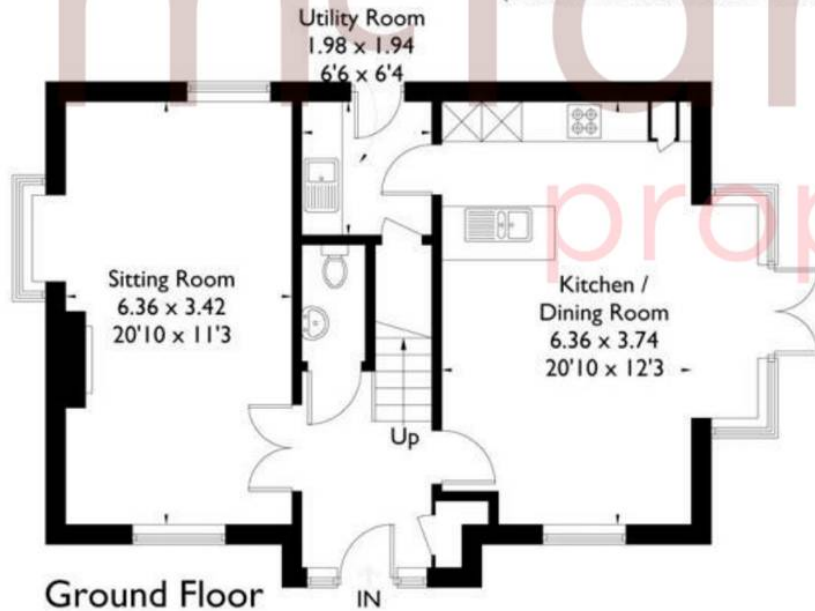


Maurice Way, Marlborough

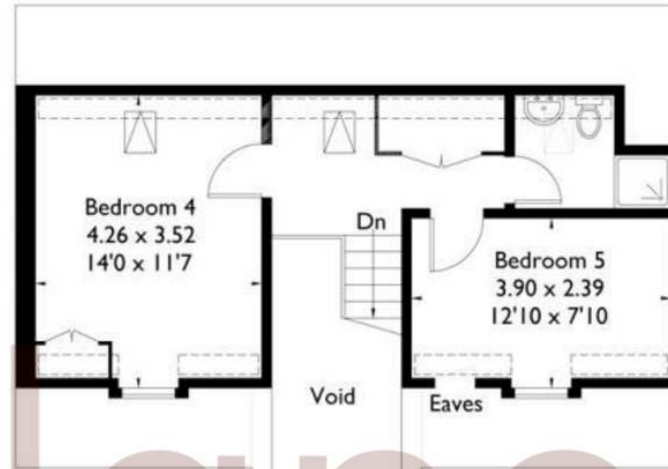
Approximate Gross Internal Area
House = 163 sq m / 1754 sq ft (Excluding Void)
Garage = 26.8 sq m / 288 sq ft
Total = 189.8 sq m / 2043 sq ft



(Not Shown In Actual Location / Orientation)



Ground Floor



Second Floor



First Floor

Marlborough Sales

McFarlane Sales & Letting, 106 High Street - SN8 1LT

01672
514380

• marlborough@mcfarlaneproperty.com • www.mcfarlaneproperty.com/

mcfarlane
property.com