



16 Newby Acre, Marlborough

Offers in Region of £260,000

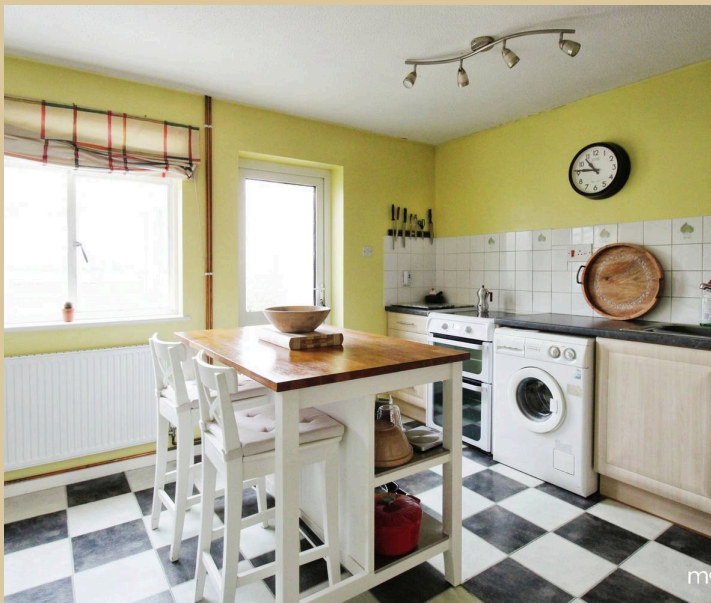
mcFarlane  
property.com





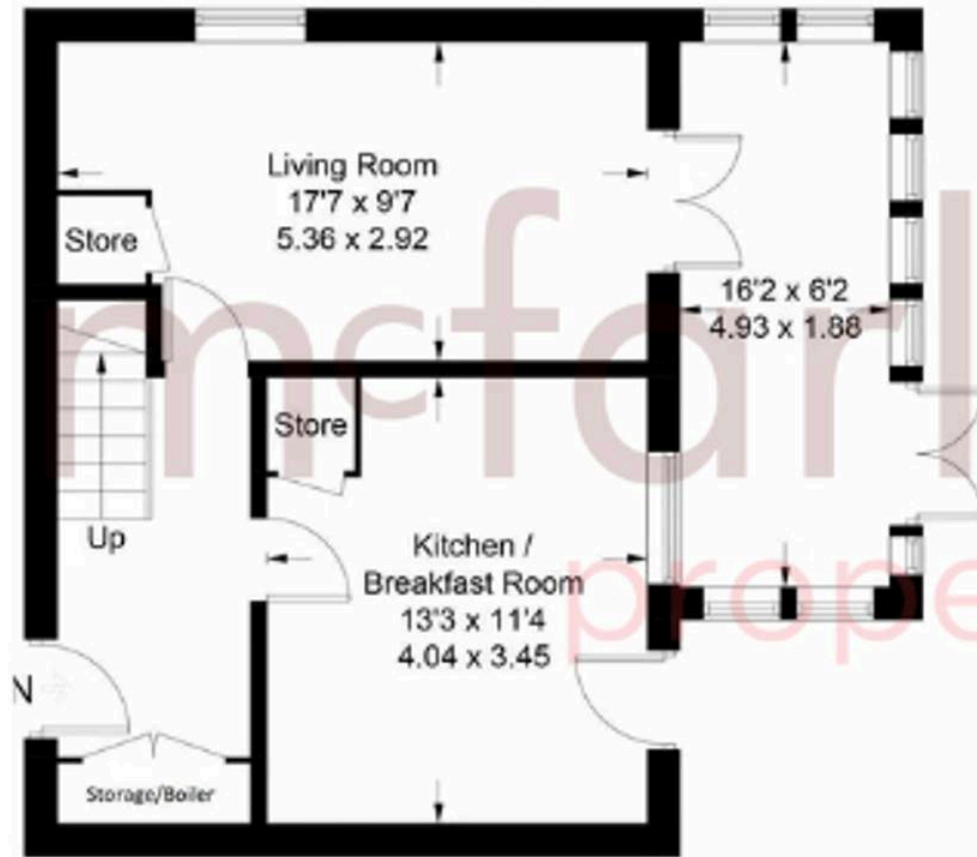
## 16 Newby Acre

Nestled just northeast of Marlborough town center, this semi-detached home beckons with its charming features. Boasting two double bedrooms, an appealing kitchen/breakfast room, and a private garden offering pleasant views. Step into spacious living spread across two floors in this inviting property. The ground floor welcomes you with an entrance hallway leading to a well-proportioned kitchen breakfast room and a lovely dual-aspect living room, complete with dining space and a garden room. Upstairs, two double bedrooms await, each offering tranquil eastward views, accompanied by a separate W.C and bathroom for added comfort.

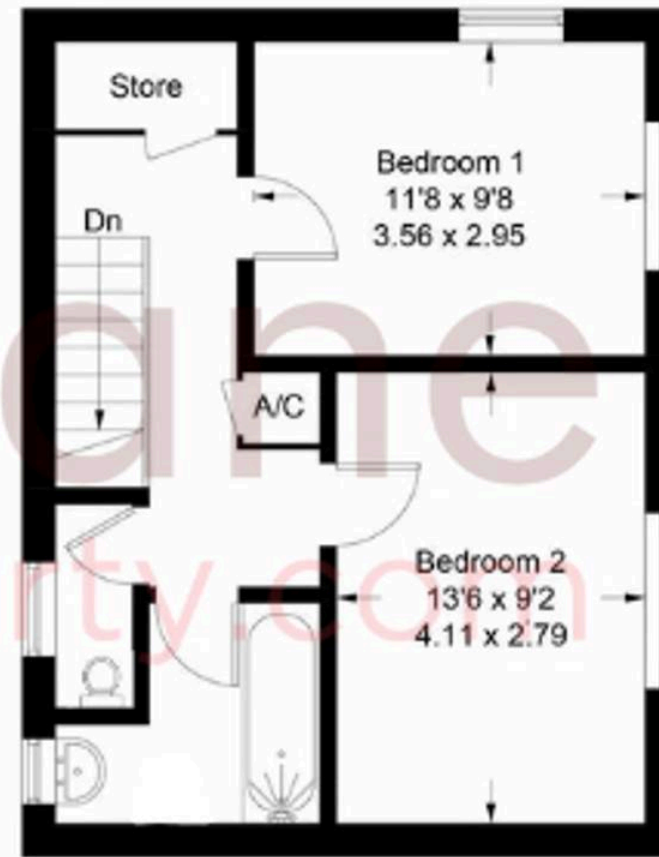


## 16 Newby Acre

Approximate Gross Internal Area = 87.6 sq m / 943 sq ft



Ground Floor



First Floor

**Marlborough Sales**

McFarlane Sales & Letting, 106 High Street – SN8 1LT

01672 514380 • [marlborough@mcfarlaneproperty.com](mailto:marlborough@mcfarlaneproperty.com) • [www.mcfarlaneproperty.com/](http://www.mcfarlaneproperty.com/)

**mcfarlane**  
property.com