



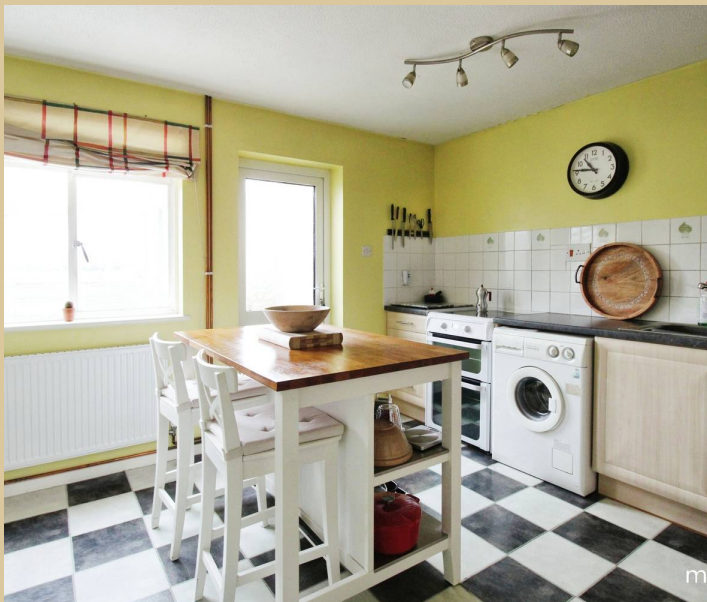
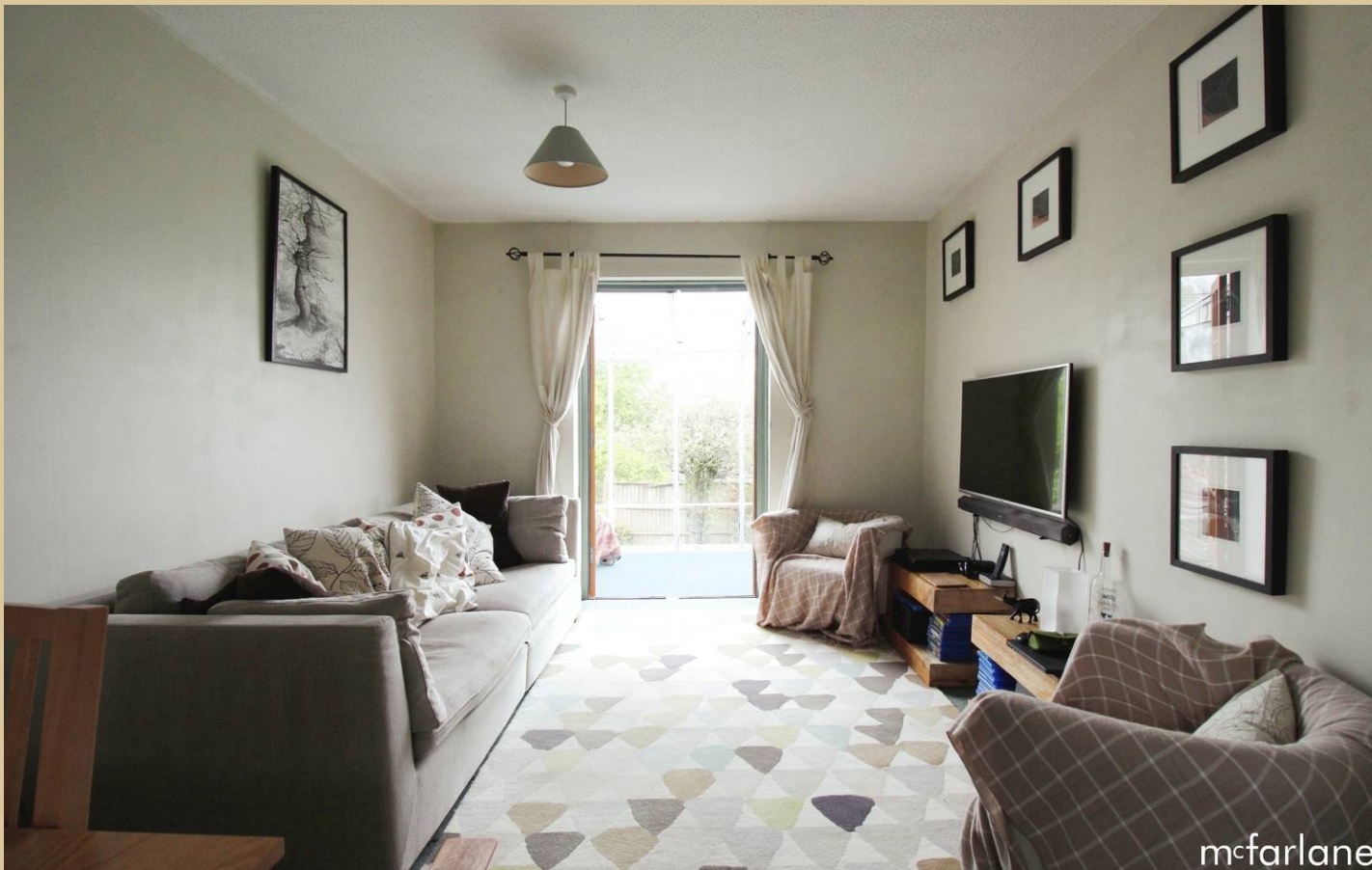
16 Newby Acre, Marlborough

£260,000

mcfarlane
property.com

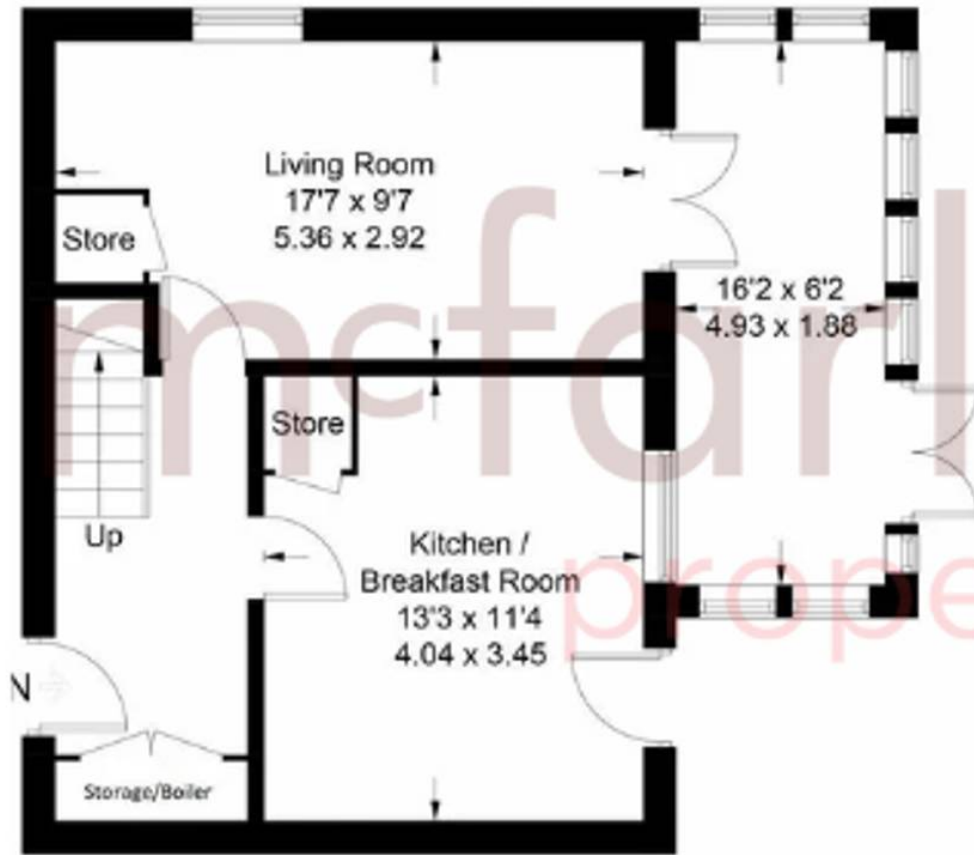
16 Newby Acre

Nestled just northeast of Marlborough town center, this semi-detached home beckons with its charming features. Boasting two double bedrooms, an appealing kitchen/breakfast room, and a private garden offering pleasant views. Step into spacious living spread across two floors in this inviting property. The ground floor welcomes you with an entrance hallway leading to a well-proportioned kitchen breakfast room and a lovely dual-aspect living room, complete with dining space and a garden room. Upstairs, two double bedrooms await, each offering tranquil eastward views, accompanied by a separate W.C and bathroom for added comfort.

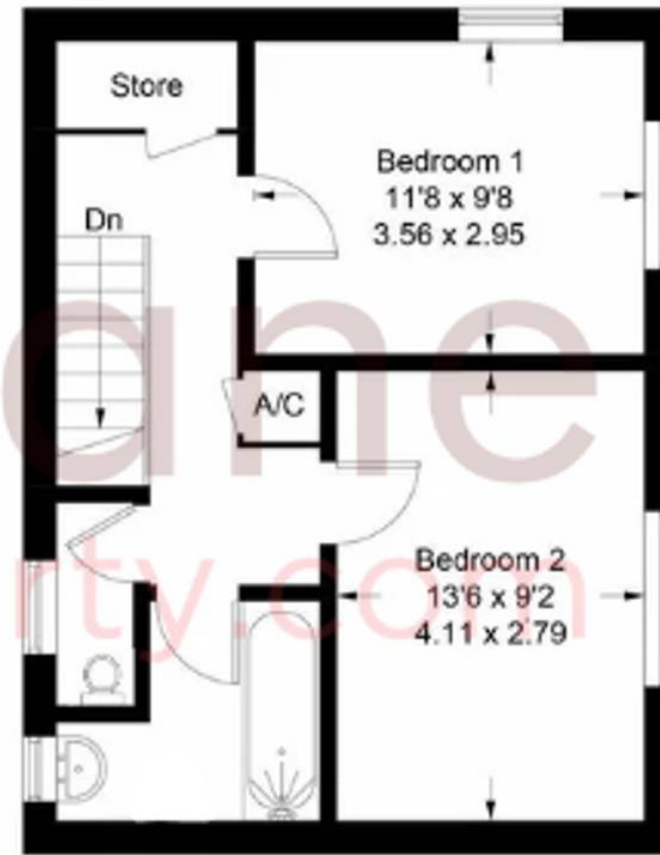


16 Newby Acre

Approximate Gross Internal Area = 87.6 sq m / 943 sq ft



Ground Floor



First Floor

Marlborough Sales

McFarlane Sales & Letting, 106 High Street - SN8 1LT

01672
514380

• marlborough@mcfarlaneproperty.com • www.mcfarlaneproperty.com/

mcfarlane
property.com