



Backbridge Farm, Sillars Green, Tetbury Road

Malmesbury

£349,995



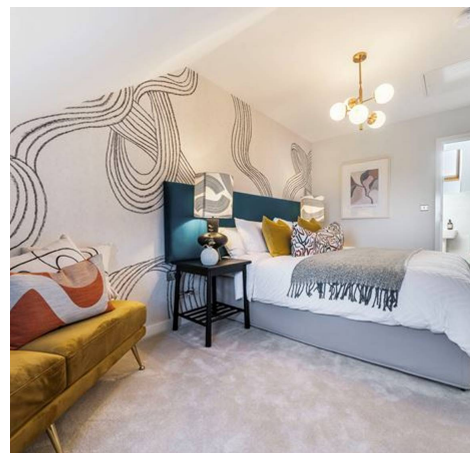
Plot 90 Backbridge Farm, Sillars Green

Tetbury Road, Malmesbury

An attractive three-storey, three bedroom home, the Souter has a modern open plan kitchen/dining room, well proportioned living room and three good sized bedrooms; the second floor bedroom one also has a spacious en suite. The enclosed porch, downstairs WC, two storage cupboards and off-road parking mean it's practical as well as stylish.

Tenure: Freehold

- SOLAR PANELS
- MASTER SUITE COVERING TOP FLOOR
- 2 1/2 STOREY
- 2 PARKING SPACES
- LARGE RECEPTION
- EN-SUITE TO MASTER
- THREE BEDROOMS
- WC
- MID TERRACE



Entrance Porch

Entrance Hall

Living Room

14' 8" x 11' 11" (4.47m x 3.63m)

Kitchen/Dining Room

8' 9" x 11' 11" (2.66m x 3.63m)

WC

Landing

Bedroom 2

10' 6" x 11' 11" (3.19m x 3.63m)

Bedroom 3

8' 9" x 11' 11" (2.66m x 3.63m)

Bathroom

Landing

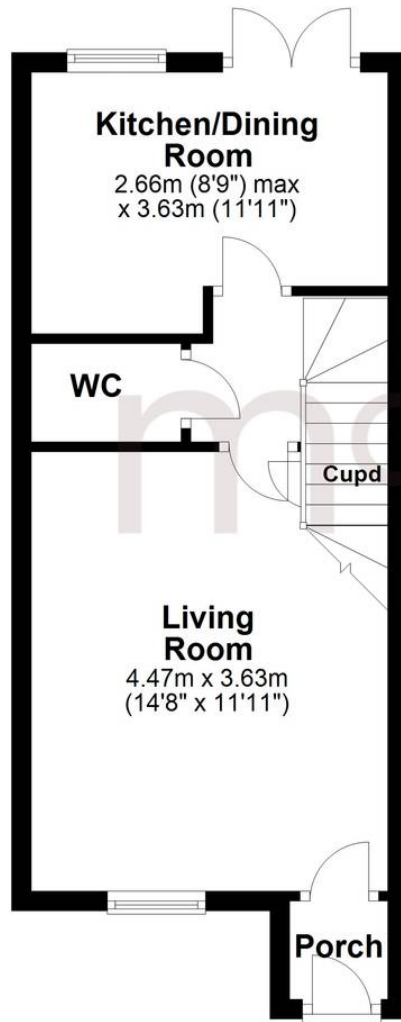
Bedroom 1

16' 11" x 8' 6" (5.16m x 2.59m)

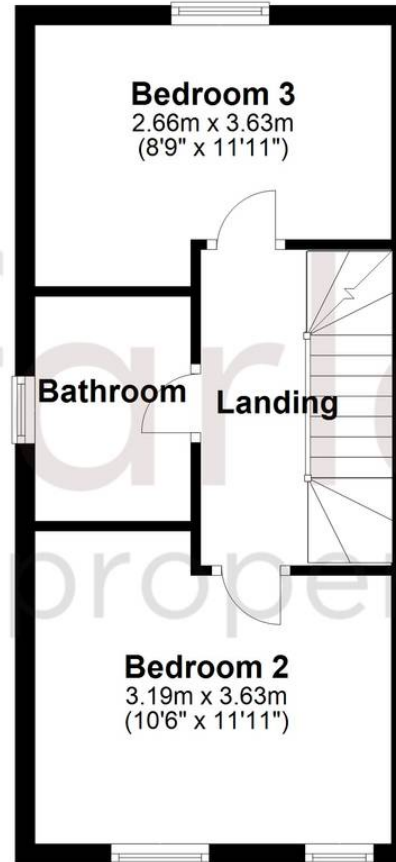
En-Suite



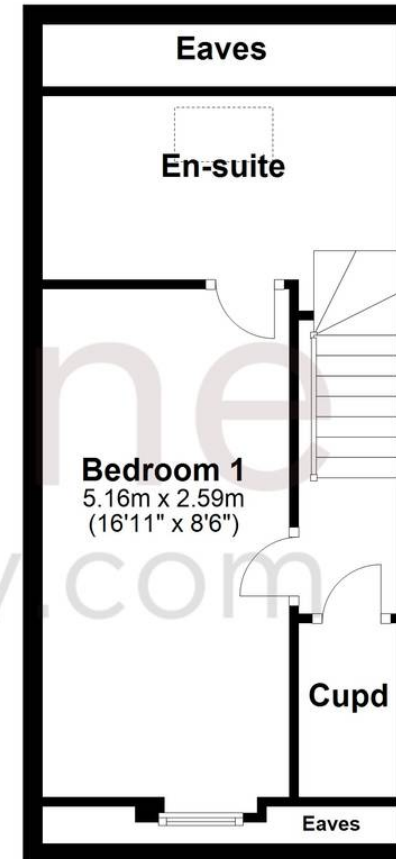
Ground Floor



First Floor



Second Floor



Marlborough Sales

McFarlane Sales & Letting, 106 High Street - SN8 1LT

01672
514380

• marlborough@mcfarlaneproperty.com • www.mcfarlaneproperty.com/